

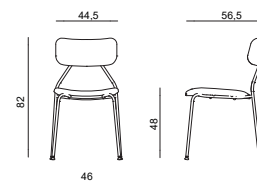
0600F - Chaise, piètement à 4 pieds



Caractéristiques

- Rembourrage en mousse polyuréthane ignifuge
- Panneaux intérieurs en bois multipli
- Sur patins

Dimensions



Livraison

Volume box: 0,23 m³
Montée
Poids box: 7,80 Kg

Garantie

5 ans

PIETEMET: 4 pieds en métal BS087

Code

piètement verni noir BS087.N

NJUTA.0600F.A01

piètement verni coloré - voir palette - BS087

NJUTA.0600F.A02

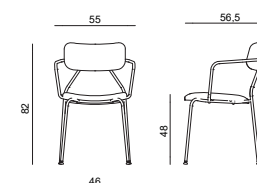
0603F - Chaise avec accoudoirs, piètement à 4 pieds



Caractéristiques

- Rembourrage en mousse polyuréthane ignifuge
- Panneaux intérieurs en bois multipli
- Sur patins

Dimensions



Livraison

Volume box: 0,23 m³
Montée
Poids box: 8,80 Kg

Garantie

5 ans

PIETEMET: 4 pieds en métal avec accoudoirs BS092

Code

piètement verni noir BS092.N

NJUTA.0603F.A03

piètement verni coloré - voir palette - BS092

NJUTA.0603F.A04

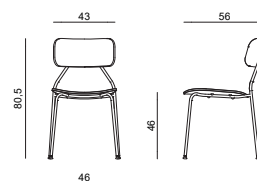
0650F - Chaise en bois, piètement à 4 pieds



Caractéristiques

- Assise et dossier en bois multipli verni
- Sur patins

Dimensions



Livraison

Volume box: 0,23 m³
Montée
Poids box: 8,80 Kg

Garantie

5 ans

Piètement: 4 pieds en métal noir BS087.N

Code

assise et dossier en bois naturel LGW.D

NJUTA.0650F.A05

assise et dossier en bois tabac LGW.F

NJUTA.0650F.A06

assise et dossier en bois noir LGW.N

NJUTA.0650F.A07

Piètement: 4 pieds en métal coloré - voir palette - BS087

Code

assise et dossier en bois naturel LGW.D

NJUTA.0650F.A08

assise et dossier en bois tabac LGW.F

NJUTA.0650F.A09

assise et dossier en bois noir LGW.N

NJUTA.0650F.A10

PUSIANO

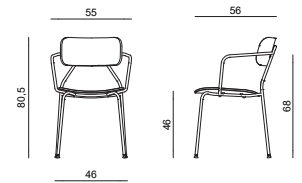
0652F - Chaise en bois avec accoudoirs, piètement à 4 pieds



Caractéristiques

- Assise et dossier en bois multipli verni
- Sur patins

Dimensions



Livraison

Volume box: 0,23 m³
Montée
Poids box: 9,80 Kg

Garantie

5 ans

Piètement: 4 pieds en métal noir BS092.N

Code

assise et dossier en bois naturel LGW.D	NJUTA.0652F.A11
assise et dossier en bois tabac LGW.F	NJUTA.0652F.A12
assise et dossier en bois noir LGW.N	NJUTA.0652F.A13

Piètement: 4 pieds en métal coloré - voir palette - BS092

Code

assise et dossier en bois naturel LGW.D	NJUTA.0652F.A14
assise et dossier en bois tabac LGW.F	NJUTA.0652F.A15
assise et dossier en bois noir LGW.N	NJUTA.0652F.A16

Finitions métal standard



Signal black

Finitions métal



Signal white



Bronze



Copper



Butterfly blue



Broom yellow



Corrosion red



Oyster white



Dark green



Basalt grey



3 semaines en
TS2 ou TS3



5 semaines

Piètements bois



Naturel wood



Tobacco wood



Black wood



3 semaines en
TS2 ou TS3

NUANCIER

TS2

TS2 NE

Mirage

Pugi•rg®



Composizione / Composition /
Composition
100% PL FR



Resistenza allo sfregamento / Fastness to rubbing /
Solidité au frottement
100.000 cycles Martindale



Peso / Weight / Poids
330 g/m²



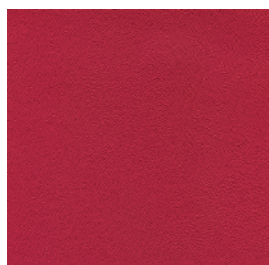
Resistenza al fuoco / Fire retardancy / Réaction au feu
CLASSE 1 IM a seconda dei modelli (vedi elenco omologazioni)
EN 1021-1/2 cigarette & match test UK
M1 FR
BS 5852 Crib 5 (please contact sales dept. for info)



Resistenza alla luce / Light fastness /
Résistance à la lumière
5 (EN ISO 105 B02)



NE 0013



NE 0173



NE 0236



NE 0234



NE 0120



NE 0012



NE 0053



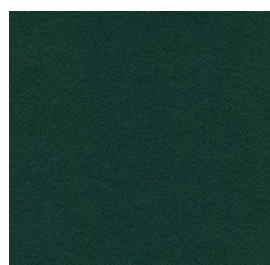
NE 0426



NE 0014



NE 0411



NE 0496



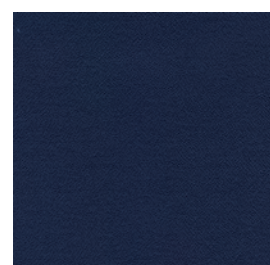
NE 0377



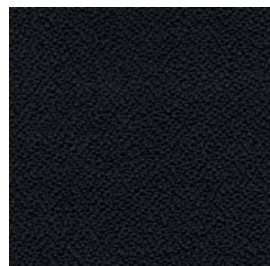
NE 0378



NE 0331



NE 0333



NE 0018



NE 0607



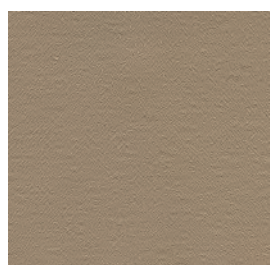
NE 0643



NE 0015



NE 0625



NE 0533



NE 0532



NE 0534



NE 0572



Composizione / Composition / Composition

85% PVC
10% PL
5% CO



Peso / Weight / Poids

600 g/m²



Resistenza alla luce / Light fastness / Résistance à la lumière

5-6 (EN ISO 105 B02)



Resistenza allo sfregamento / Fastness to rubbing / Solidité au frottement

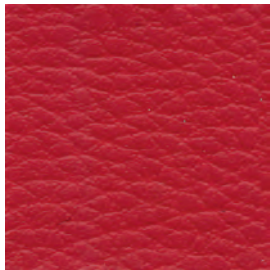
> 51.000 Martindale



Resistenza al fuoco / Fire retardancy / Réaction au feu

CLASSE 1 IM a seconda dei modelli (vedi elenco omologazioni)

EN 1021-1/2 cigarette & match test UK



ZS 06KO



ZS 06ME



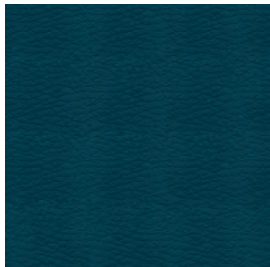
ZS 06KN



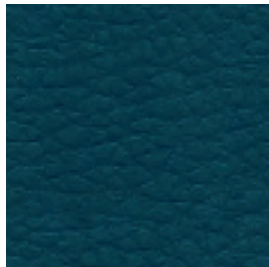
ZS 03CV



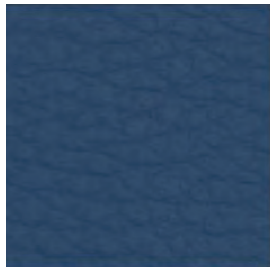
ZS 07EV



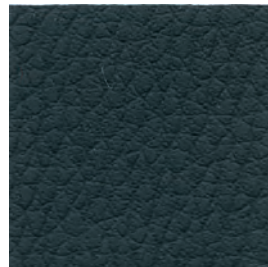
ZS 07KF



ZS 07F3



ZS 08I1



ZS 02F1



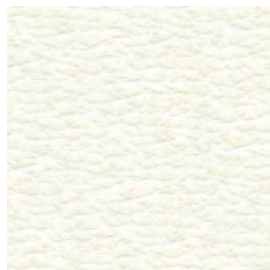
ZS 0901



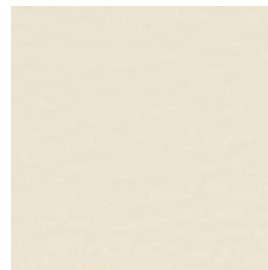
ZS 02E8



ZS 02DO



ZS 01B4



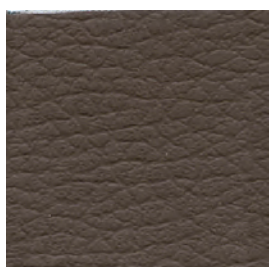
ZS 04HO



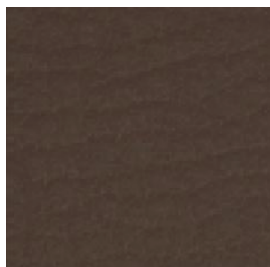
ZS 04L1



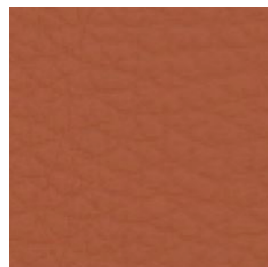
ZS 04HJ



ZS 05L1



ZS 05HO



ZS 06M7



Composizione / Composition / Composition
50% PET - 50% R-PET



Peso / Weight / Poids
350 g/m²



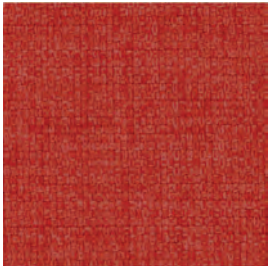
Resistenza alla luce / Light fastness / Résistance à la lumière
ISO 105-B02 (Xenotest)



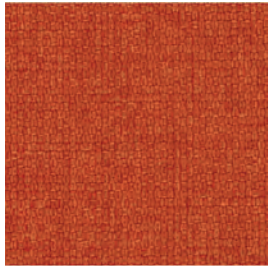
Resistenza allo sfregamento / Fastness to rubbing / Solidité au frottement
>100.000 Martindale



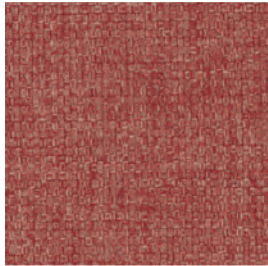
Resistenza al fuoco / Fire retardancy / Réaction au feu
CLASSE 1 IT
UNI 9175 Class 1 IM
EN 1021-1/2 cigarette & match test UK
BS 7176 UK
BS 5852 Crib 5 (please contact sales dept. for info)



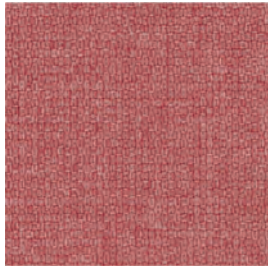
FTI 4021



FTI 3082



FTI 4079



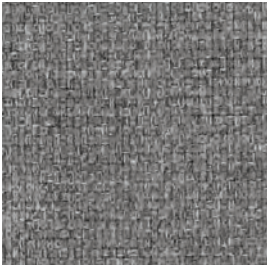
FTI 4022



FTI 1010



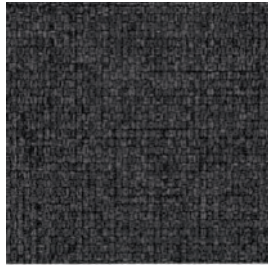
FTI 8048



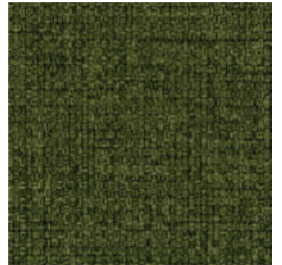
FTI 8004



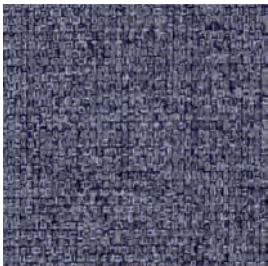
FTI 8006



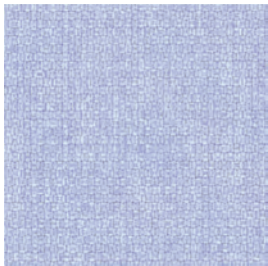
FTI 8007



FTI 7036



FTI 6026



FTI 6001

NUANCIER

TS3

TS3
GST

Step
Gabriel



Composizione / Composition / Composition
100% TREVIRA CS



Peso / Weight / Poids
470 g/lm



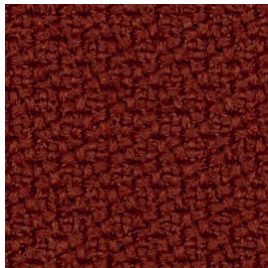
Resistenza alla luce / Light fastness / Résistance à la lumière
5-7 (EN ISO 105 B02)



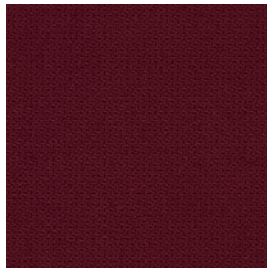
Resistenza allo sfregamento / Fastness to rubbing
/ Solidité au frottement
100.000 Martindale



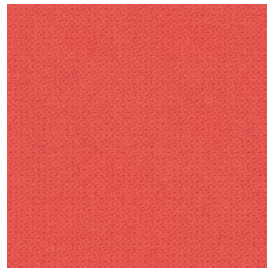
Resistenza al fuoco / Fire retardancy / Réaction au feu
CLASSE 1 IT
EN 1021-1/2 cigarette & match test UK
BS 5852 Crib 5 (please contact sales dept. for info)
M1 FR
DIN 4102-B1



GST 63075



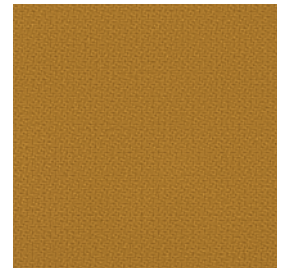
GST 64159



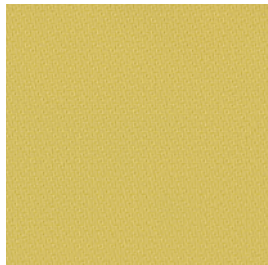
64178



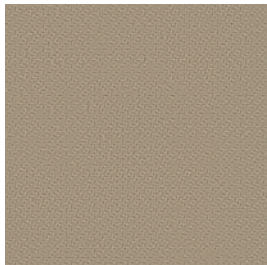
GST 63739



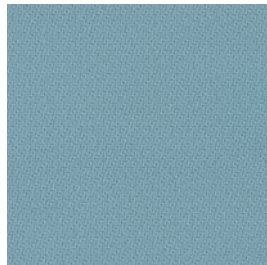
GST 62057



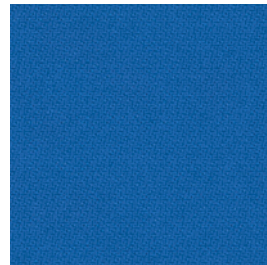
GST 68701



GST 61149



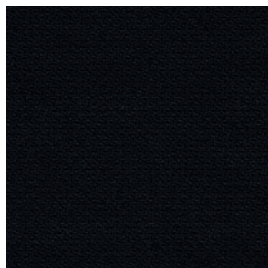
GST 67004



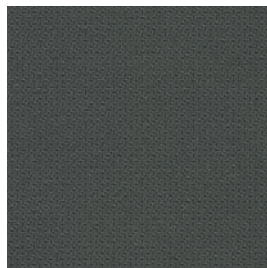
GST 66151



GST 66148



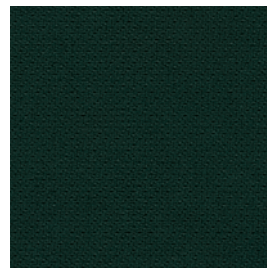
GST 60999



GST 60092



GST 68161



GST 68121

TS3 PPO



Composizione / Composition / Composition
100% PES riciclato certificato Seaqual
/ recycled Seaqual certified / recyclé
certifié Seaqual



Peso / Weight / Poids
500 g/m²



Resistenza alla luce / Light fastness / Résistance à la lumière
6±1 (EN ISO 105 B02)



Resistenza allo sfregamento / Fastness to rubbing / Solidité au frottement
>100.000 Martindale



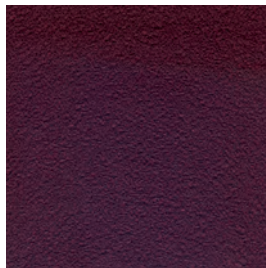
Resistenza al fuoco / Fire retardancy / Réaction au feu
CLASSE 1 IT
EN 1021-1/2 cigarette & match test UK
BS 5852 Crib 5 (please contact sales dept. for info)



SEAQUAL
INITIATIVE



PPO 0552



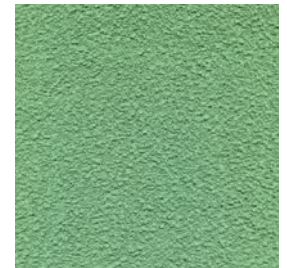
PPO 0252



PPO 0051



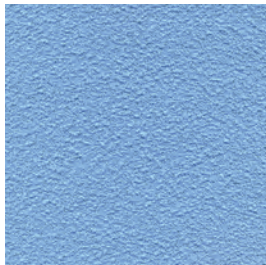
PPO 0453



PPO 0451



PPO 0454



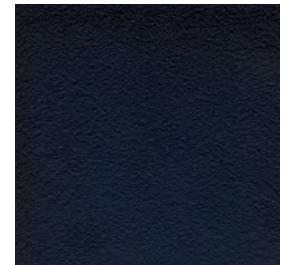
PPO 0351



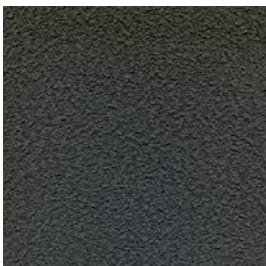
PPO 0301



PPO 0304



PPO 0651



PPO 0604



PPO 0602



PPO 0501



PPO 0503



Composizione / Composition / Composition
100% PES Trevira CS



Peso / Weight / Poids
250 g/m²



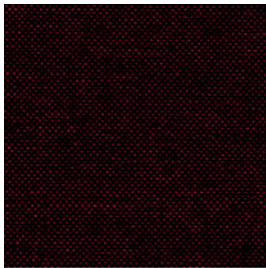
Resistenza alla luce / Light fastness / Résistance à la lumière
6 (EN ISO 105 B02)



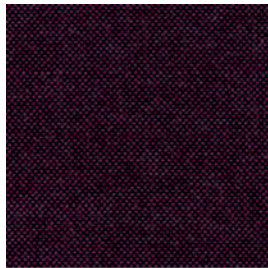
Resistenza allo sfregamento / Fastness to rubbing / Solidité au frottement
70.000 cycles Martindale



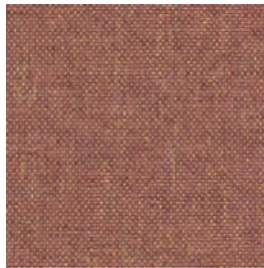
Resistenza al fuoco / Fire retardancy / Réaction au feu
CLASSE 1 IM a seconda dei modelli (vedi elenco omologazioni)
EN 1021-1/2 cigarette & match test UK
BS 5852 Crib 5 (please contact sales dept. for info)
M1 FR



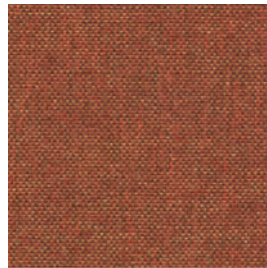
RC 8514



RC 8515



RC 5504



RC 4501



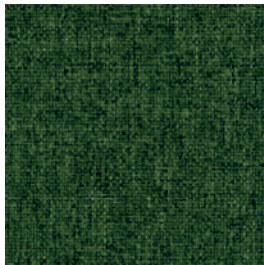
RC 3503



RC 3506



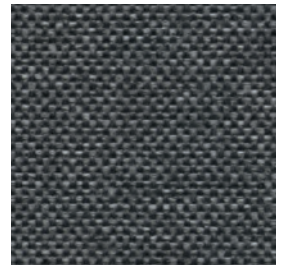
RC 7503



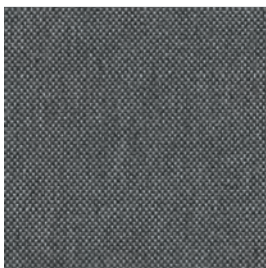
RC 7016



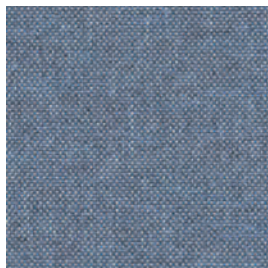
RC 2517



RC 8030



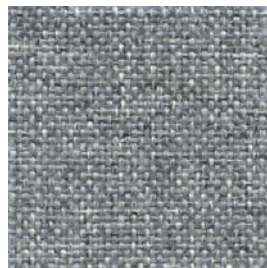
RC 8502



RC 6502



RC 6501



RC 8501



RC 1502



Composizione / Composition / Composition

100% PL



Peso / Weight / Poids

320 g/m² ±5% g/m²



Resistenza alla luce / Light fastness / Résistance à la lumière

5 (EN ISO 105 B02)



Resistenza allo sfregamento / Fastness to rubbing / Solidité au frottement

≥100.000 Martindale



Resistenza al fuoco / Fire retardancy / Réaction au feu

EN 1021-1/2 cigarette & match test UK



ER 0006



ER 0029



ER 0019



ER 0024



ER 0041



ER 0002



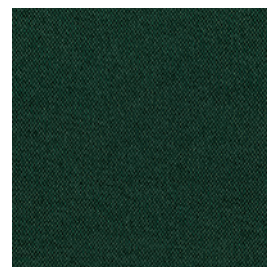
ER 0032



ER 0033



ER 0034



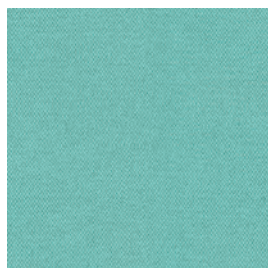
ER 0035



ER 0040



ER 0015



ER 0020

TS3 GRE

Renewed loop

Gabriel



Composizione / Composition / Composition
100% POST CONSUMER / POST RECYCLED PL



Peso / Weight / Poids
370g/lm



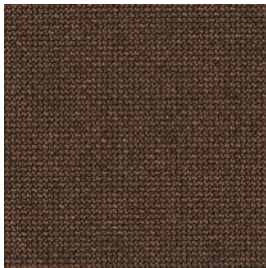
Resistenza alla luce / Light fastness / Résistance à la lumière
(EN ISO 105 B02)



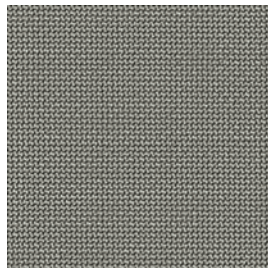
Resistenza allo sfregamento / Fastness to rubbing / Solidité au frottement
100.000 Martindale



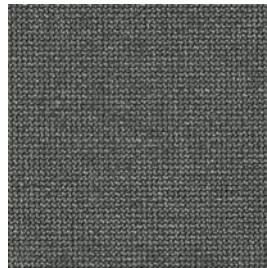
Resistenza al fuoco / Fire retardancy / Réaction au feu
**EN 1021-1/2 cigarette & match test UK
DIN 13501-1B**



GRE 63133



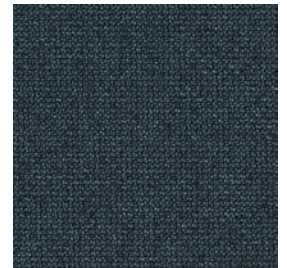
GRE 61280



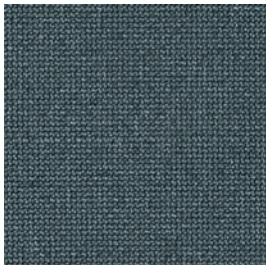
GRE 61281



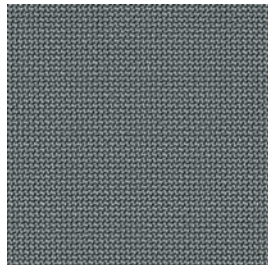
GRE 60341



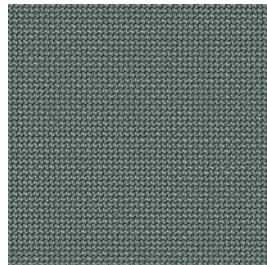
GRE 66256



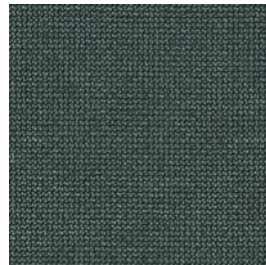
GRE 66254



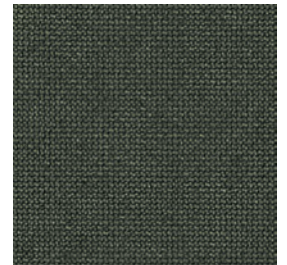
GRE 60340



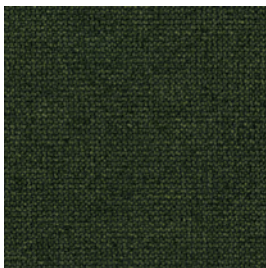
GRE 68290



GRE 68291



GRE 68288



GRE 68285



Composizione / Composition / Composition

75% WO

25% PA



Peso / Weight / Poids

335±7% g/m²



Resistenza alla luce / Light fastness / Résistance à la lumière

6±1 (EN ISO 105 B02)



Resistenza allo sfregamento / Fastness to rubbing / Solidité au frottement

>100.000 Martindale



Resistenza al fuoco / Fire retardancy / Réaction au feu

CLASSE 1 IT

BS 5852 Crib 5 (please contact sales dept. for info)

EN 1021-1/2 cigarette & match test UK



FE 0202



FE 0154



FE 0103



FE 0504



FE 0503



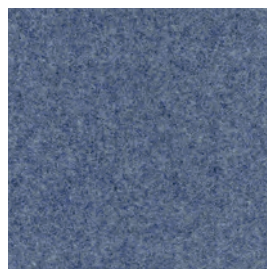
FE 0057



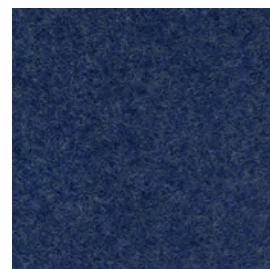
FE 0051



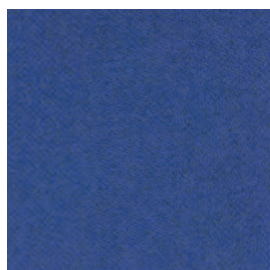
FE 0453



FE 0301



FE 0302



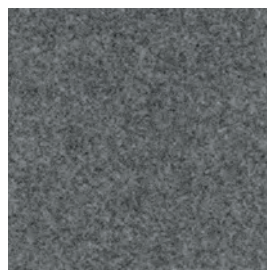
FE 0313



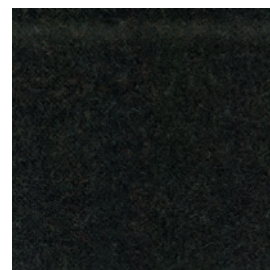
FE 0251



FE 0621



FE 0602



FE 0651

TS3
SL

Sealife
FIDIVI*



Composizione / Composition / Composition

100% PES riciclato certificato Seaqual
/ recycled Seaqual certified / recyclé certifié Seaqual



Peso / Weight / Poids

460 g/m²



Resistenza alla luce / Light fastness / Résistance à la lumière

6 (UNI EN ISO 105-B02)



Resistenza allo sfregamento / Fastness to rubbing / Solidité au frottement

>100.000 Martindale cycles

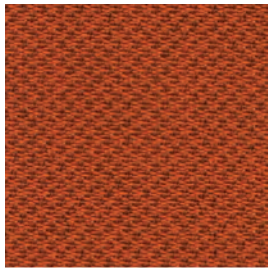


Resistenza al fuoco / Fire retardancy / Réaction au feu

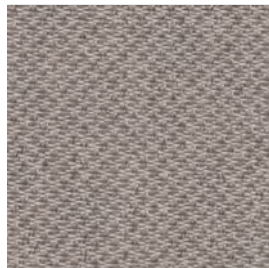
EN 1021-1/2 cigarette & match test UK



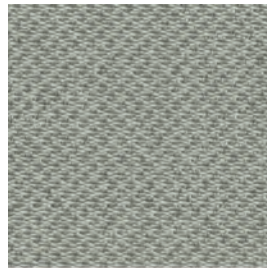
SEAQUAL
INITIATIVE



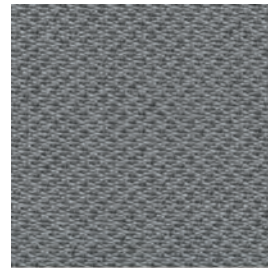
SL 4566



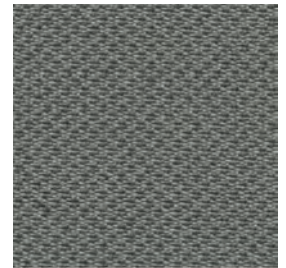
SL 4522



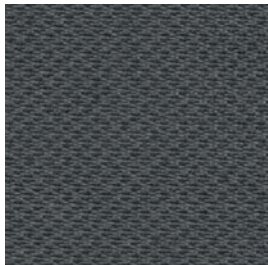
SL 1506



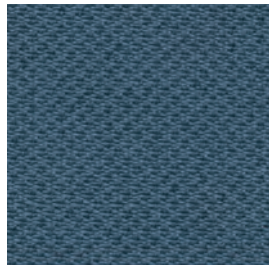
SL 8532



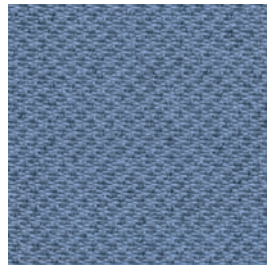
SL 2519



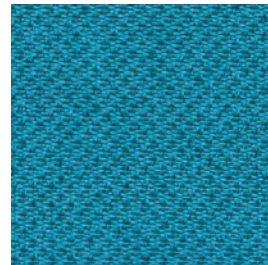
SL 8517



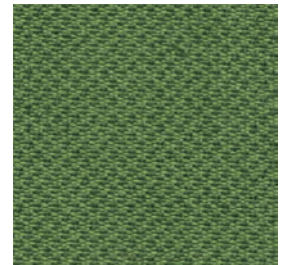
SL 6512



SL 5592



SL 6591



SL 7521



SL 3509

TS3 ML

Main Line Flax camira



Composizione / Composition / Composition

75% WOOL

25% FLAX



Peso / Weight / Poids

437g/m² ±5% g/m²



Resistenza alla luce / Light fastness / Résistance à la lumière

4-5 (EN ISO 105 B02)



Resistenza allo sfregamento / Fastness to rubbing

/ Solidité au frottement

≥50.000 Martindale



Resistenza al fuoco / Fire retardancy / Réaction au feu

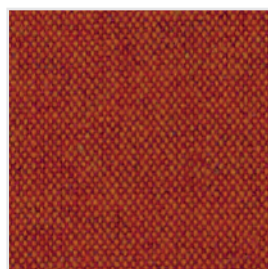
Classe 1 IT

EN 1021-1/2 cigarette & match test UK

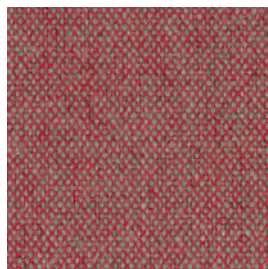
BS 5852 Crib 5 (please contact sales dept. for info)



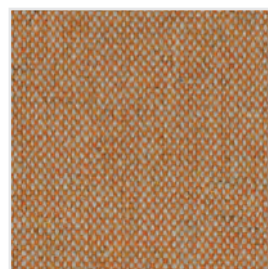
ML 0014



ML 0013



ML 0003



ML 0008



ML 0023



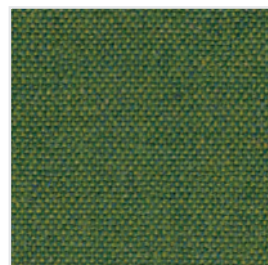
ML 0020



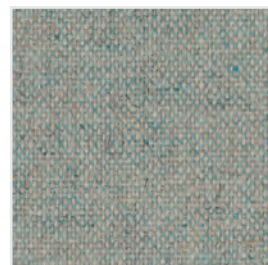
ML 0017



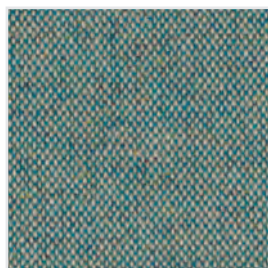
ML 0007



ML 0018



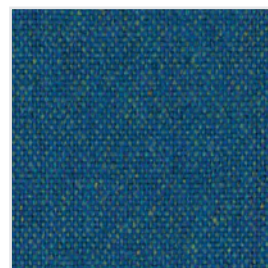
ML 0010



ML 0024



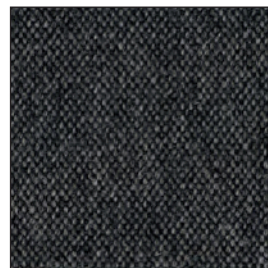
ML 0022



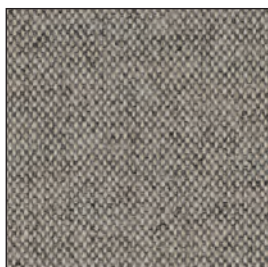
ML 0034



ML 0036



ML 0016



ML 0002

TS3
MLT

Main Line Twist
camira



Composizione / Composition / Composition
75% WOOL
25% FLAX



Peso / Weight / Poids
437 ±5% g/m²



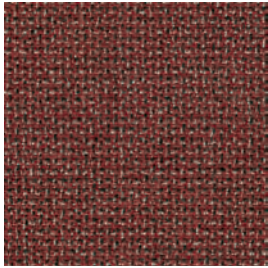
Resistenza alla luce / Light fastness / Résistance à la lumière
4-5 (EN ISO 105 B02)



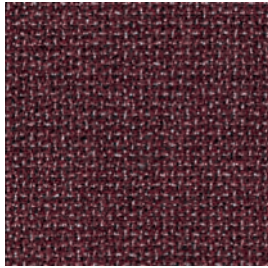
Resistenza allo sfregamento / Fastness to rubbing
/ Solidité au frottement
≥50.000 Martindale



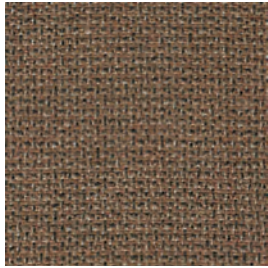
Resistenza al fuoco / Fire retardancy / Réaction au feu
Classe 1 IT
EN 1021-1/2 cigarette & match test UK
BS 5852 Crib 5 (please contact sales dept. for info)



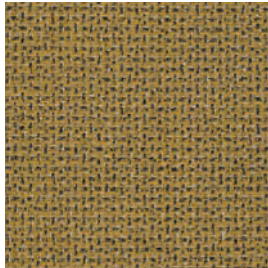
MLT 0002



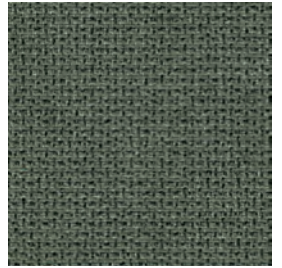
MLT 0006



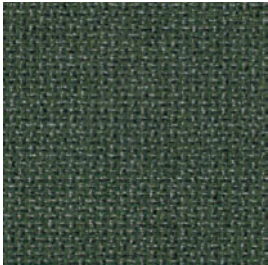
MLT 0010



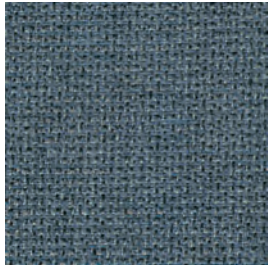
MLT 0001



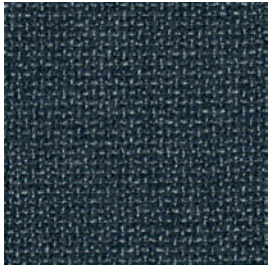
MLT 0011



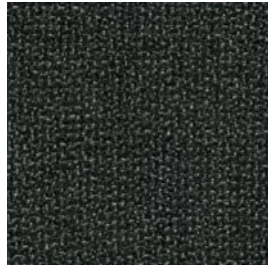
MLT 0008



MLT 0004



MLT 0005



MLT 0015



MLT 0014



MLT 0013



MLT 0012

TS3 CS



Composizione / Composition / Composition
100% PES



Peso / Weight / Poids
570 g/m²



Resistenza alla luce / Light fastness / Résistance à la lumière
4 (UNI EN ISO 105-B02)



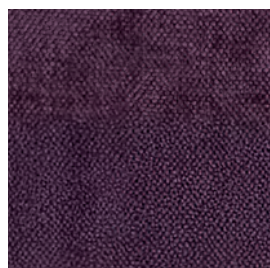
Resistenza allo sfregamento / Fastness to rubbing
/ Solidité au frottement
> 80.000 Martindale cycles



Resistenza al fuoco / Fire retardancy / Réaction au feu
CLASSE 1 IT
EN 1021-1/2 cigarette & match test UK



CS 0200



CS 0703



CS 0301



CS 0700



CS 0902



CS 0806



CS 0608



CS 0804



CS 0107



CS 0401



CS 0503



CS 0506

TS3
LBA

Batik

lederplast_{s.p.a.}



Composizione / Composition / Composition

92,4% PVC
7,6% PL



Peso / Weight / Poids

750±50 g/m²



Resistenza alla luce / Light fastness / Résistance à la lumière

≥ 7 (EN ISO 105 B02)



Resistenza allo sfregamento / Fastness to rubbing

/ Solidité au frottement

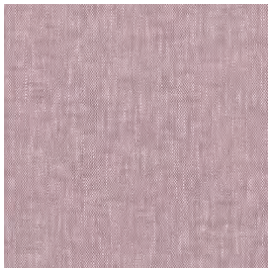
100.000 Martindale



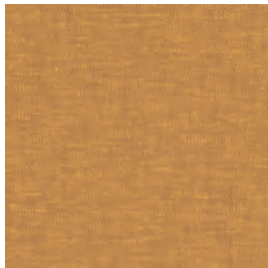
Resistenza al fuoco / Fire retardancy / Réaction au feu

CLASSE 1 IT

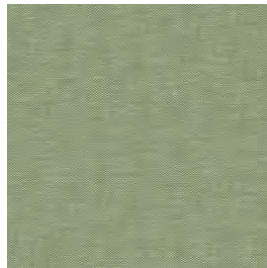
EN 1021-1/2 cigarette & match test UK



LBA 1584



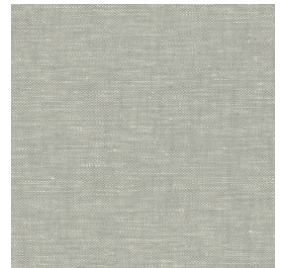
LBA A57



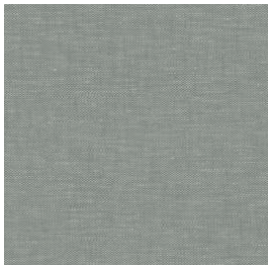
LBA V019



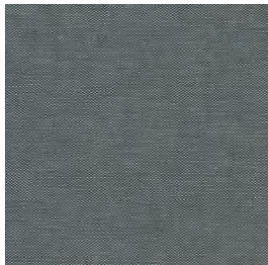
LBA 7088



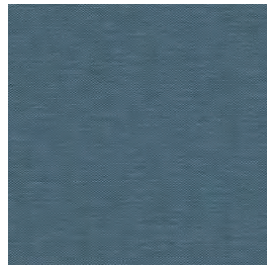
LBA 2270



LBA 7089



LBA 2266



LBA 8085