

# CICOGNA

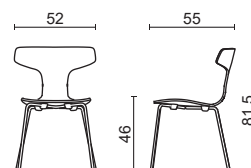
## 0554S - Chaise en bois, piètement à 4 pieds métal



### Caractéristiques

- Coque en bois multipli verni

### Dimensions



### Livraison

Volume box: 0,23 m<sup>3</sup>  
Montée  
Poids box: 7,40 Kg

### Garantie

5 ans

Piètement: 4 pieds en métal chromé BS108.C

	Code	éco
coque en bois verni naturel LGS.R	SELMA.0554S.A01	0,88
coque en bois verni tabac LGS.P	SELMA.0554S.A02	0,88
coque en bois verni noir LGS.N	SELMA.0554S.A03	0,88

Piètement: 4 pieds en métal noir BS108.N

	Code	éco
coque en bois verni naturel LGS.R	SELMA.0554S.A04	0,88
coque en bois verni tabac LGS.P	SELMA.0554S.A05	0,88
coque en bois verni noir LGS.N	SELMA.0554S.A06	0,88

Piètement: 4 pieds en métal coloré - voir palette - BS108

	Code	éco
coque en bois verni naturel LGS.R	SELMA.0554S.A07	0,88
coque en bois verni tabac LGS.P	SELMA.0554S.A08	0,88
coque en bois verni noir LGS.N	SELMA.0554S.A09	0,88

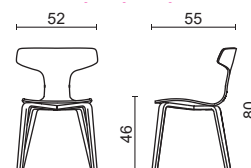
## 0555S - Chaise, piètement à 4 pieds bois



### Caractéristiques

- Coque en bois multipli verni

### Dimensions



### Livraison

Volume box: 0,23 m<sup>3</sup>  
Montée  
Poids box: 8,00 Kg

### Garantie

5 ans

Piètement: 4 pieds en bois BS093

	Code	éco
coque et piètement en bois verni naturel BS093.R	SELMA.0555S.A10	0,86
coque et piètement en bois verni tabac BS093.P	SELMA.0555S.A11	0,86
coque et piètement en bois verni noir BS093.N	SELMA.0555S.A12	0,86

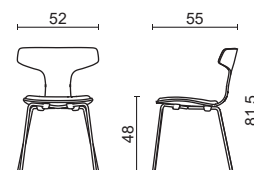
## 0561S - Chaise en bois avec assise tapissée, piètement à 4 pieds métal



## Caractéristiques

- Coque en bois multipli verni
- Rembourrage en mousse polyuréthane ignifuge

## Dimensions



## Livraison

Volume box: 0,23 m<sup>3</sup>  
Montée  
Poids box: 7,80 Kg

## Garantie

5 ans

Piètement: 4 pieds en métal chromé BS108.C

	Code	éco
coque en bois verni naturel LGS.R	SELMA.0561S.A13	0,92
coque en bois verni tabac LGS.P	SELMA.0561S.A14	0,92
coque en bois verni noir LGS.N	SELMA.0561S.A15	0,92

Piètement: 4 pieds en métal noir BS108.N

	Code	éco
coque en bois verni naturel LGS.R	SELMA.0561S.A16	0,92
coque en bois verni tabac LGS.P	SELMA.0561S.A17	0,92
coque en bois verni noir LGS.N	SELMA.0561S.A18	0,92

Piètement: 4 pieds en métal coloré - voir palette - BS108

	Code	éco
coque en bois verni naturel LGS.R	SELMA.0561S.A19	0,92
coque en bois verni tabac LGS.P	SELMA.0561S.A20	0,92
coque en bois verni noir LGS.N	SELMA.0561S.A21	0,92

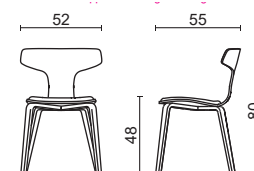
## 0562S - Chaise en bois avec assise tapissée, piètement à 4 pieds bois



## Caractéristiques

- Coque en bois multipli verni
- Rembourrage en mousse polyuréthane ignifuge

## Dimensions



## Livraison

Volume box: 0,23 m<sup>3</sup>  
Montée  
Poids box: 8,40 Kg

## Garantie

5 ans

Piètement: 4 pieds en bois BS093

	Code	éco
coque et piètement en bois verni naturel BS093.R	SELMA.0562S.A22	0,90
coque et piètement en bois verni tabac BS093.P	SELMA.0562S.A23	0,90
coque et piètement en bois verni noir BS093.N	SELMA.0562S.A24	0,90

# CICOGNA

## Finitions métal standard



Chrome



Signal  
black



Signal  
white



Bronze



Copper



Butterfly  
blue



Broom  
yellow



Corrosion  
red



Oyster  
white



Dark  
green



Basalt  
grey



3 semaines en  
TS2 ou TS3



5 semaines

## Coques et piètements bois



Naturel wood



Tobacco  
wood



Black  
wood



3 semaines en  
TS2 ou TS3

---

**NUANCIER**

**TS2**

# TS2 NE

Mirage

Pugi•rg®



Composizione / Composition /  
Composition  
**100% PL FR**



Resistenza allo sfregamento / Fastness to rubbing /  
Solidité au frottement  
**100.000 cycles Martindale**



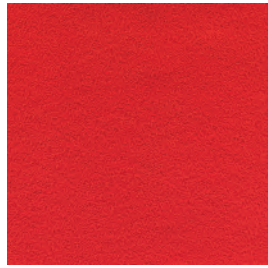
Peso / Weight / Poids  
**330 g/m<sup>2</sup>**



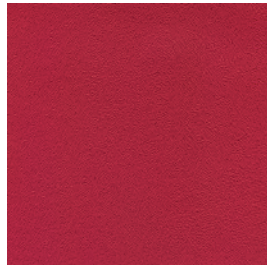
Resistenza al fuoco / Fire retardancy / Réaction au feu  
**CLASSE 1 IM** a seconda dei modelli (vedi elenco omologazioni)  
**EN 1021-1/2 cigarette & match test UK**  
**M1 FR**  
**BS 5852 Crib 5** (please contact sales dept. for info)



Resistenza alla luce / Light fastness /  
Résistance à la lumière  
**5 (EN ISO 105 B02)**



NE 0013



NE 0173



NE 0236



NE 0234



NE 0120



NE 0012



NE 0053



NE 0426



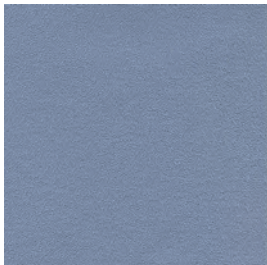
NE 0014



NE 0411



NE 0496



NE 0377



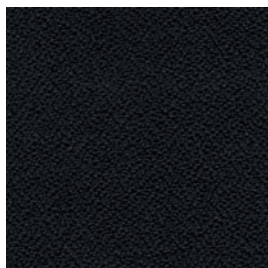
NE 0378



NE 0331



NE 0333



NE 0018



NE 0607



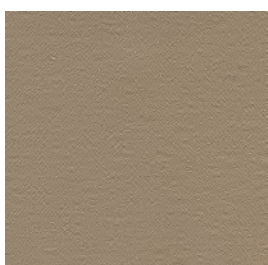
NE 0643



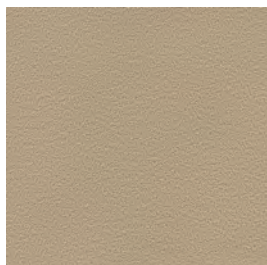
NE 0015



NE 0625



NE 0533



NE 0532



NE 0534



NE 0572



Composizione / Composition / Composition

**85% PVC**

**10% PL**

**5% CO**



Peso / Weight / Poids

**600 g/m<sup>2</sup>**



Resistenza alla luce / Light fastness / Résistance à la lumière

**5-6 (EN ISO 105 B02)**



Resistenza allo sfregamento / Fastness to rubbing / Solidité au frottement

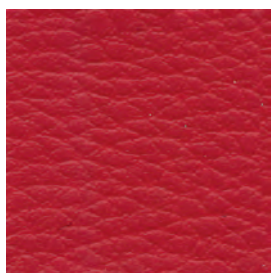
**> 51.000 Martindale**



Resistenza al fuoco / Fire retardancy / Réaction au feu

**CLASSE 1 IM a seconda dei modelli (vedi elenco omologazioni)**

**EN 1021-1/2 cigarette & match test UK**



ZS 06KO



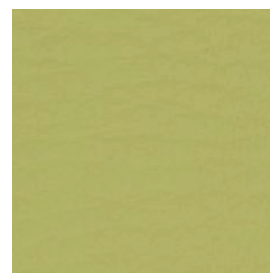
ZS 06ME



ZS 06KN



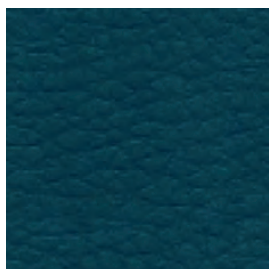
ZS 03CV



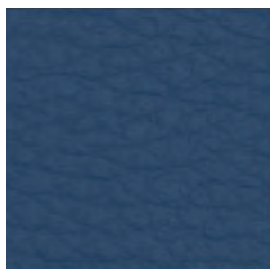
ZS 07EV



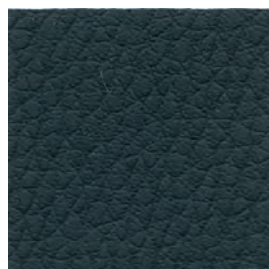
ZS 07KF



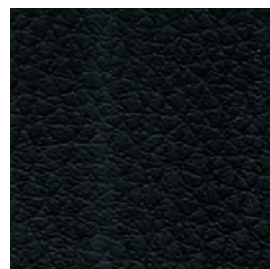
ZS 07F3



ZS 08I1



ZS 02F1



ZS 0901



ZS 02E8



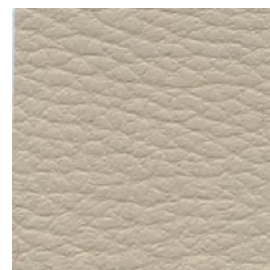
ZS 02DO



ZS 01B4



ZS 04HO



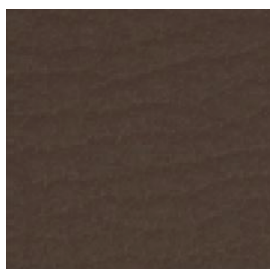
ZS 04L1



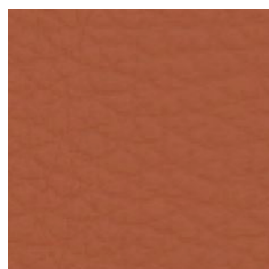
ZS 04HJ



ZS 05L1



ZS 05HO



ZS 06M7



Composizione / Composition / Composition  
**50% PET - 50% R-PET**



Peso / Weight / Poids  
**350 g/m<sup>2</sup>**



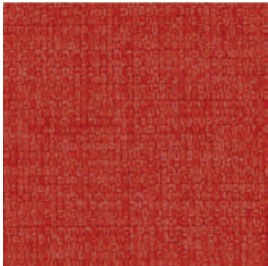
Resistenza alla luce / Light fastness / Résistance à la lumière  
**ISO 105-B02 (Xenotest)**



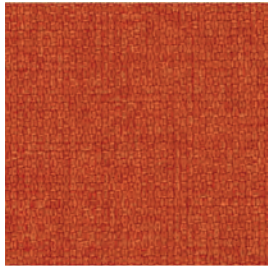
Resistenza allo sfregamento / Fastness to rubbing / Solidité au frottement  
**>100.000 Martindale**



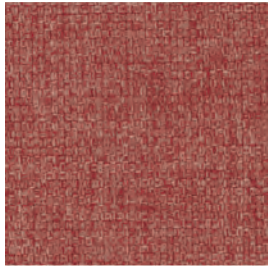
Resistenza al fuoco / Fire retardancy / Réaction au feu  
**CLASSE 1 IT**  
**UNI 9175 Class 1 IM**  
**EN 1021-1/2 cigarette & match test UK**  
**BS 7176 UK**  
**BS 5852 Crib 5 (please contact sales dept. for info)**



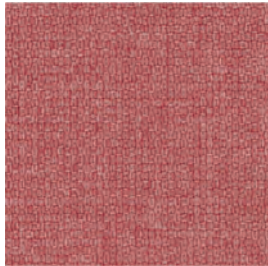
FTI 4021



FTI 3082



FTI 4079



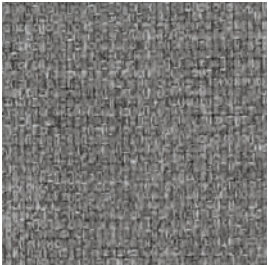
FTI 4022



FTI 1010



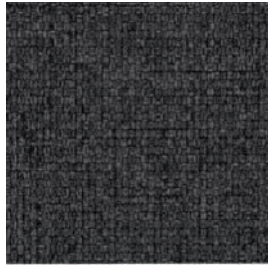
FTI 8048



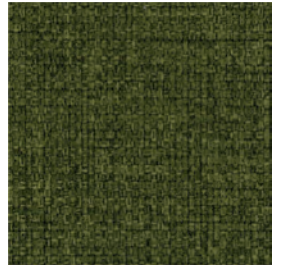
FTI 8004



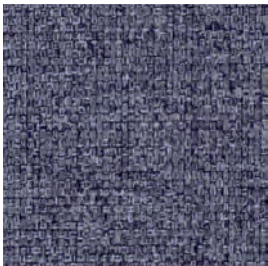
FTI 8006



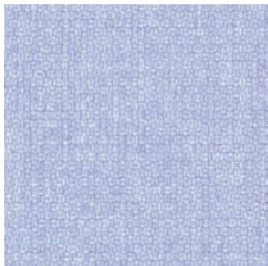
FTI 8007



FTI 7036



FTI 6026



FTI 6001

---

**NUANCIER**

**TS3**





TS3  
**GST**


Step  
**Gabriel**

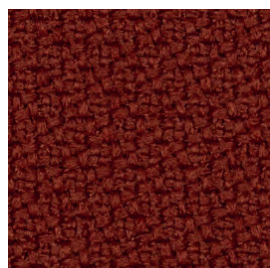
 Composizione / Composition / Composition  
**100% TREVIRA CS**

 Peso / Weight / Poids  
**470 g/lm**

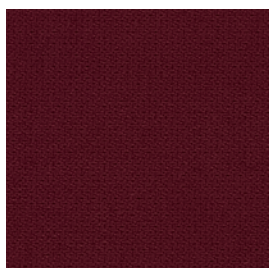
 Resistenza alla luce / Light fastness / Résistance à la lumière  
**5-7 (EN ISO 105 B02)**

 Resistenza allo sfregamento / Fastness to rubbing  
/ Solidité au frottement  
**100.000 Martindale**

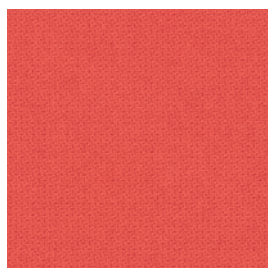
 Resistenza al fuoco / Fire retardancy / Réaction au feu  
**CLASSE 1 IT**  
**EN 1021-1/2 cigarette & match test UK**  
**BS 5852 Crib 5 (please contact sales dept. for info)**  
**M1 FR**  
**DIN 4102-B1**



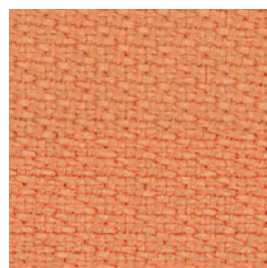
**GST 63075**



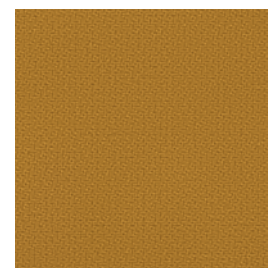
**GST 64159**



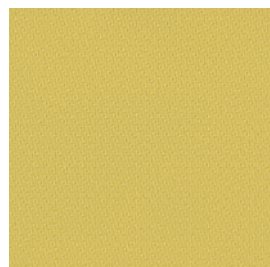
**64178**



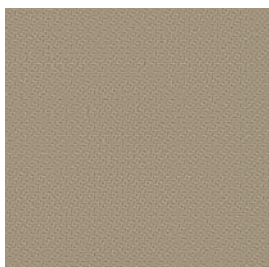
**GST 63739**



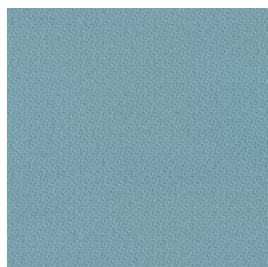
**GST 62057**



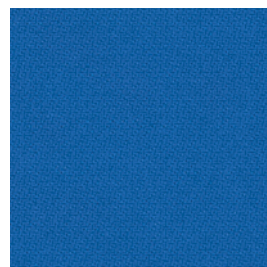
**GST 68701**



**GST 61149**



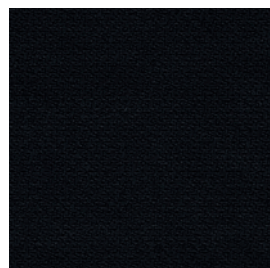
**GST 67004**



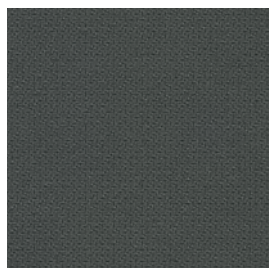
**GST 66151**



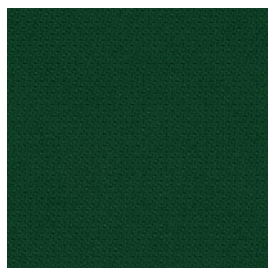
**GST 66148**



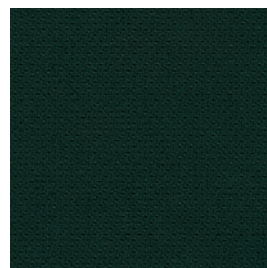
**GST 60999**



**GST 60092**



**GST 68161**



**GST 68121**

# TS3 PPO



Composizione / Composition / Composition  
**100% PES riciclato certificato Seaqual**  
/ recycled Seaqual certified / recyclé  
certifié Seaqual



Peso / Weight / Poids  
**500 g/m<sup>2</sup>**



Resistenza alla luce / Light fastness / Résistance à la lumière  
**6±1 (EN ISO 105 B02)**



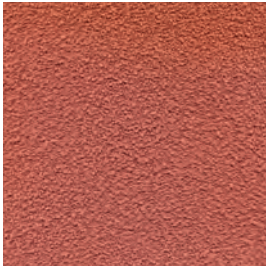
Resistenza allo sfregamento / Fastness to rubbing / Solidité au frottement  
**>100.000 Martindale**



Resistenza al fuoco / Fire retardancy / Réaction au feu  
**CLASSE 1 IT**  
**EN 1021-1/2 cigarette & match test UK**  
**BS 5852 Crib 5 (please contact sales dept. for info)**



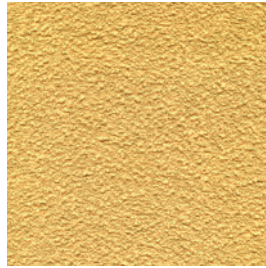
**SEAQUAL**  
INITIATIVE



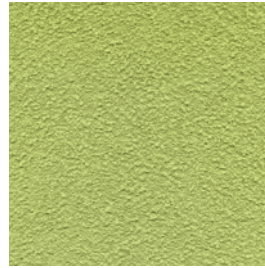
PPO 0552



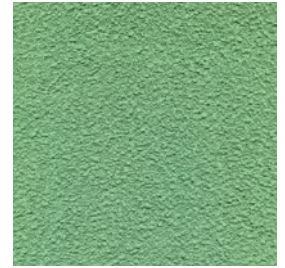
PPO 0252



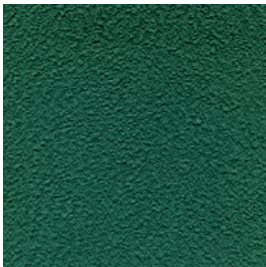
PPO 0051



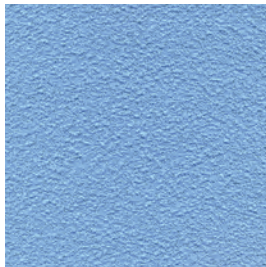
PPO 0453



PPO 0451



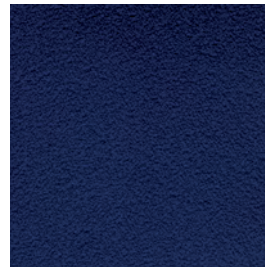
PPO 0454



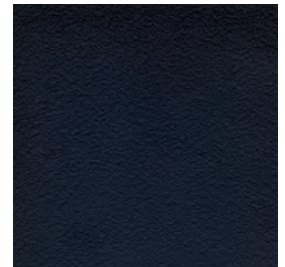
PPO 0351



PPO 0301



PPO 0304



PPO 0651



PPO 0604



PPO 0602



PPO 0501



PPO 0503



Composizione / Composition / Composition  
**100% PES Trevira CS**



Peso / Weight / Poids  
**250 g/m<sup>2</sup>**



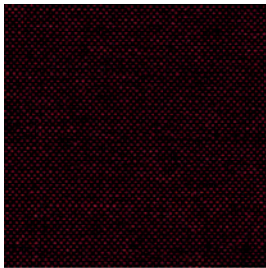
Resistenza alla luce / Light fastness / Résistance à la lumière  
**6 (EN ISO 105 B02)**



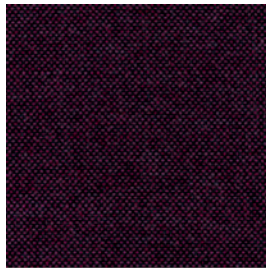
Resistenza allo sfregamento / Fastness to rubbing / Solidité au frottement  
**70.000 cycles Martindale**



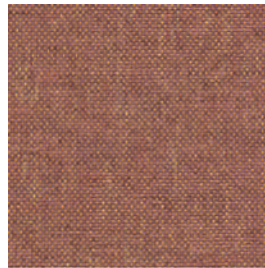
Resistenza al fuoco / Fire retardancy / Réaction au feu  
**CLASSE 1 IM a seconda dei modelli (vedi elenco omologazioni)**  
**EN 1021-1/2 cigarette & match test UK**  
**BS 5852 Crib 5 (please contact sales dept. for info)**  
**M1 FR**



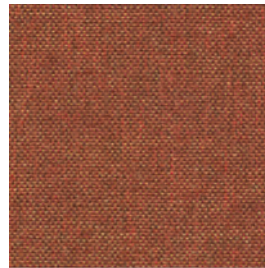
RC 8514



RC 8515



RC 5504



RC 4501



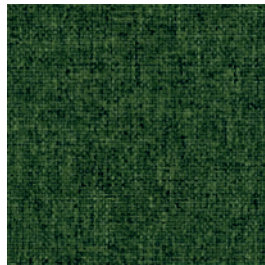
RC 3503



RC 3506



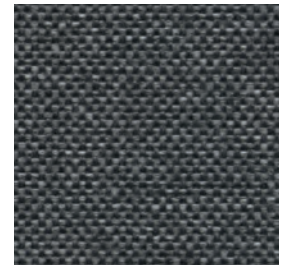
RC 7503



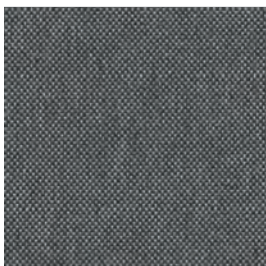
RC 7016



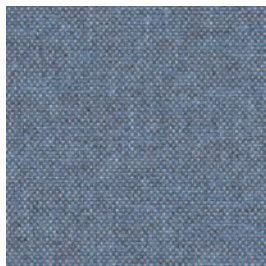
RC 2517



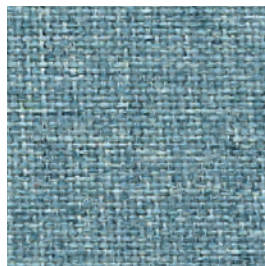
RC 8030



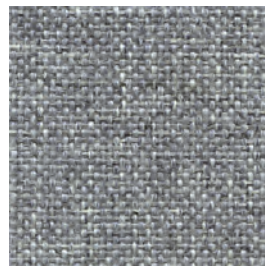
RC 8502



RC 6502



RC 6501



RC 8501



RC 1502



Composizione / Composition / Composition

100% PL



Peso / Weight / Poids

320 g/m<sup>2</sup> ±5% g/m<sup>2</sup>



Resistenza alla luce / Light fastness / Résistance à la lumière

5 (EN ISO 105 B02)



Resistenza allo sfregamento / Fastness to rubbing / Solidité au frottement

≥100.000 Martindale



Resistenza al fuoco / Fire retardancy / Réaction au feu

EN 1021-1/2 cigarette & match test UK



ER 0006



ER 0029



ER 0019



ER 0024



ER 0041



ER 0002



ER 0032



ER 0033



ER 0034



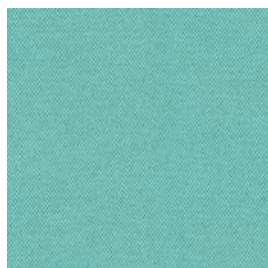
ER 0035



ER 0040



ER 0015



ER 0020

# TS3 GRE

Renewed loop

**Gabriel**



Composizione / Composition / Composition  
**100% POST CONSUMER / POST RECYCLED PL**



Peso / Weight / Poids  
**370g/lm**



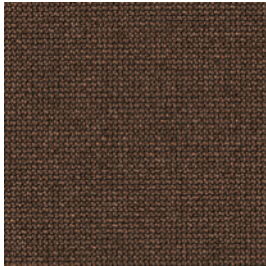
Resistenza alla luce / Light fastness / Résistance à la lumière  
**(EN ISO 105 B02)**



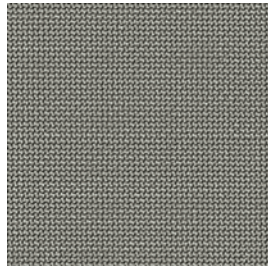
Resistenza allo sfregamento / Fastness to rubbing / Solidité au frottement  
**100.000 Martindale**



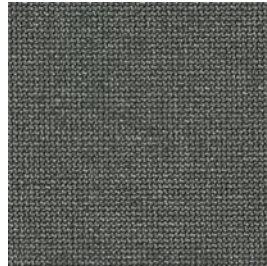
Resistenza al fuoco / Fire retardancy / Réaction au feu  
**EN 1021-1/2 cigarette & match test UK  
DIN 13501-1B**



**GRE 63133**



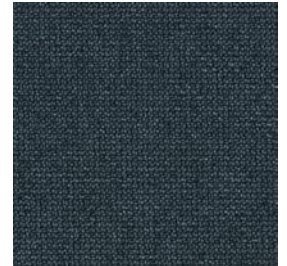
**GRE 61280**



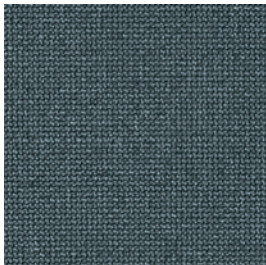
**GRE 61281**



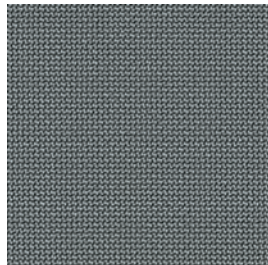
**GRE 60341**



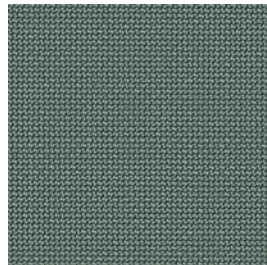
**GRE 66256**



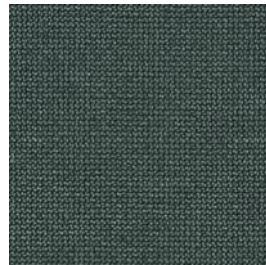
**GRE 66254**



**GRE 60340**



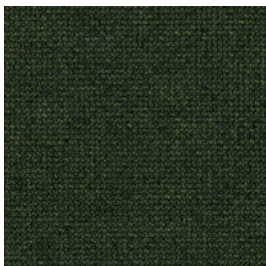
**GRE 68290**



**GRE 68291**



**GRE 68288**



**GRE 68285**



Composizione / Composition / Composition

**75% WO**

**25% PA**



Peso / Weight / Poids

**335±7% g/m<sup>2</sup>**



Resistenza alla luce / Light fastness / Résistance à la lumière

**6±1 (EN ISO 105 B02)**



Resistenza allo sfregamento / Fastness to rubbing / Solidité au frottement

**>100.000 Martindale**



Resistenza al fuoco / Fire retardancy / Réaction au feu

**CLASSE 1 IT**

**BS 5852 Crib 5 (please contact sales dept. for info)**

**EN 1021-1/2 cigarette & match test UK**



FE 0202



FE 0154



FE 0103



FE 0504



FE 0503



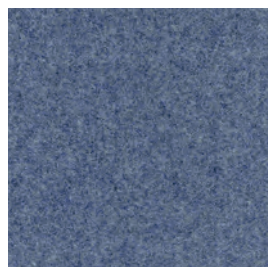
FE 0057



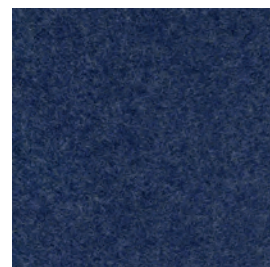
FE 0051



FE 0453



FE 0301



FE 0302



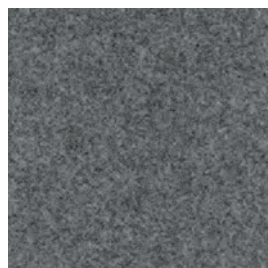
FE 0313



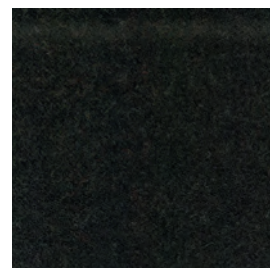
FE 0251



FE 0621



FE 0602



FE 0651

TS3  
SL

Sealife  
FIDIVI\*



Composizione / Composition / Composition

**100% PES riciclato certificato Seaqual**  
/ recycled Seaqual certified / recyclé certifié Seaqual



Peso / Weight / Poids

**460 g/m<sup>2</sup>**



Resistenza alla luce / Light fastness / Résistance à la lumière

**6 (UNI EN ISO 105-B02)**



Resistenza allo sfregamento / Fastness to rubbing / Solidité au frottement

**>100.000 Martindale cycles**

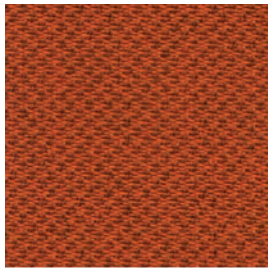


Resistenza al fuoco / Fire retardancy / Réaction au feu

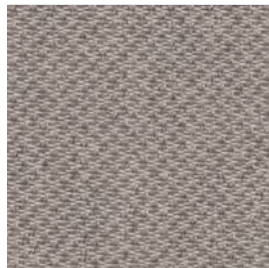
**EN 1021-1/2 cigarette & match test UK**



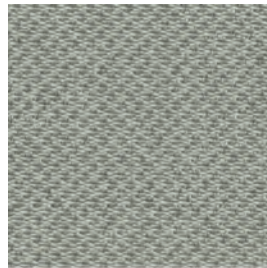
SEAQUAL  
INITIATIVE



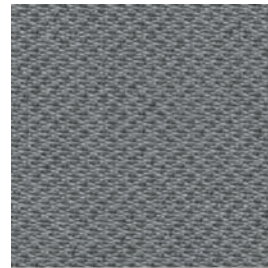
SL 4566



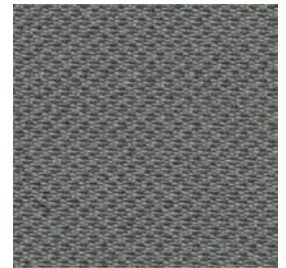
SL 4522



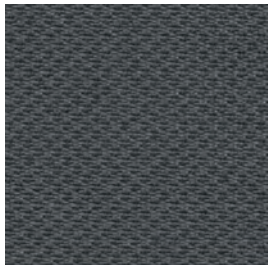
SL 1506



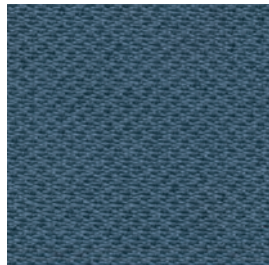
SL 8532



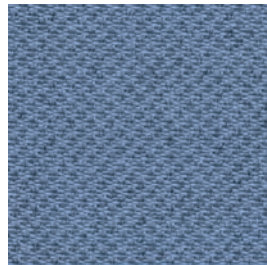
SL 2519



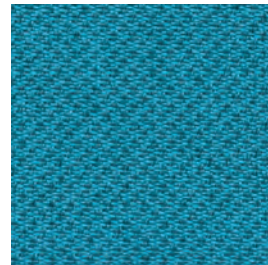
SL 8517



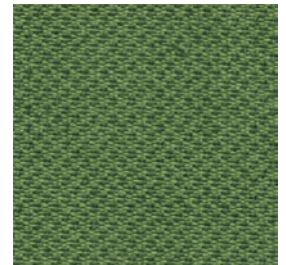
SL 6512



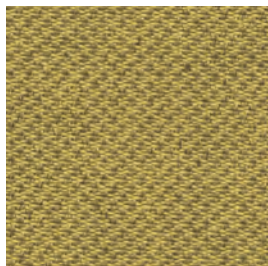
SL 5592



SL 6591



SL 7521



SL 3509

# TS3 ML

## Main Line Flax camira



Composizione / Composition / Composition  
**75% WOOL**  
**25% FLAX**



Peso / Weight / Poids  
**437g/m<sup>2</sup> ±5% g/m<sup>2</sup>**



Resistenza alla luce / Light fastness / Résistance à la lumière  
**4-5 (EN ISO 105 B02)**



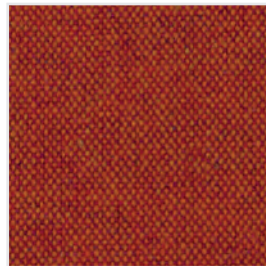
Resistenza allo sfregamento / Fastness to rubbing  
/ Solidité au frottement  
**≥50.000 Martindale**



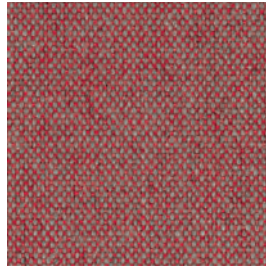
Resistenza al fuoco / Fire retardancy / Réaction au feu  
**Classe 1 IT**  
**EN 1021-1/2 cigarette & match test UK**  
**BS 5852 Crib 5 (please contact sales dept. for info)**



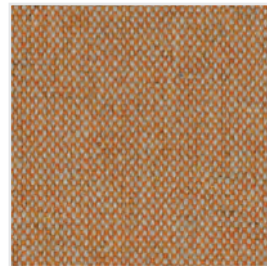
ML 0014



ML 0013



ML 0003



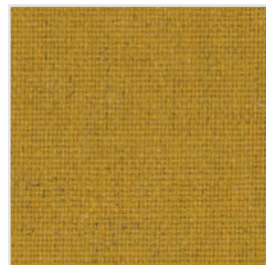
ML 0008



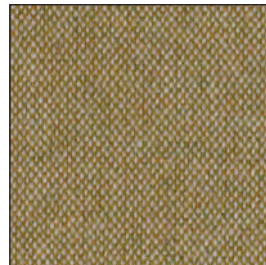
ML 0023



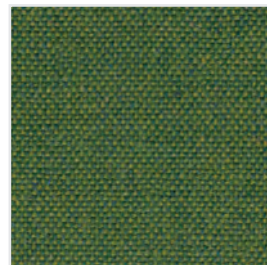
ML 0020



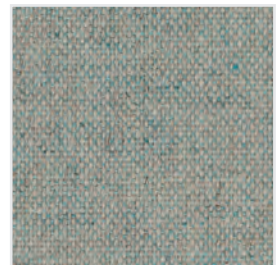
ML 0017



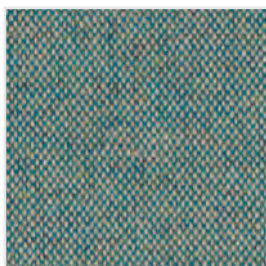
ML 0007



ML 0018



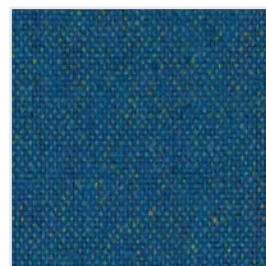
ML 0010



ML 0024



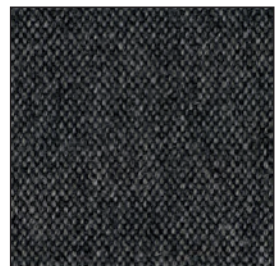
ML 0022



ML 0034



ML 0036



ML 0016



ML 0002



TS3  
**MLT**

Main Line Twist  
**camira**



Composizione / Composition / Composition  
**75% WOOL**  
**25% FLAX**



Peso / Weight / Poids  
**437 ±5% g/m<sup>2</sup>**



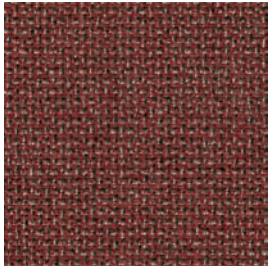
Resistenza alla luce / Light fastness / Résistance à la lumière  
**4-5 (EN ISO 105 B02)**



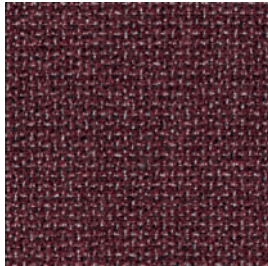
Resistenza allo sfregamento / Fastness to rubbing  
/ Solidité au frottement  
**≥50.000 Martindale**



Resistenza al fuoco / Fire retardancy / Réaction au feu  
**Classe 1 IT**  
**EN 1021-1/2 cigarette & match test UK**  
**BS 5852 Crib 5 (please contact sales dept. for info)**



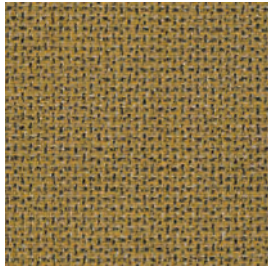
**MLT 0002**



**MLT 0006**



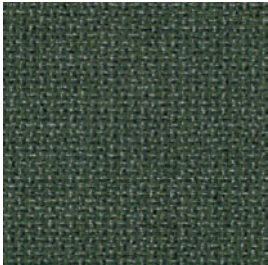
**MLT 0010**



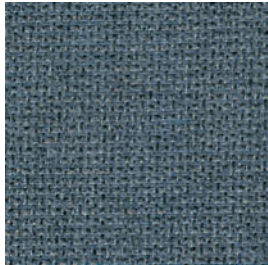
**MLT 0001**



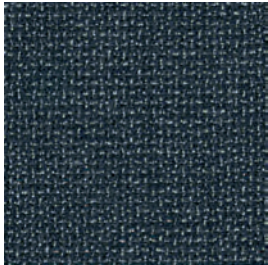
**MLT 0011**



**MLT 0008**



**MLT 0004**



**MLT 0005**



**MLT 0015**



**MLT 0014**



**MLT 0013**



**MLT 0012**

TS3  
CS



Composizione / Composition / Composition  
**100% PES**



Peso / Weight / Poids  
**570 g/m<sup>2</sup>**



Resistenza alla luce / Light fastness / Résistance à la lumière  
**4 (UNI EN ISO 105-B02)**



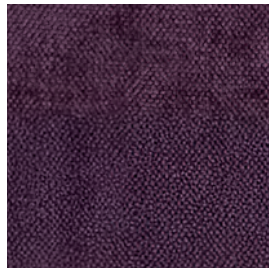
Resistenza allo sfregamento / Fastness to rubbing  
/ Solidité au frottement  
**> 80.000 Martindale cycles**



Resistenza al fuoco / Fire retardancy / Réaction au feu  
**CLASSE 1 IT**  
**EN 1021-1/2 cigarette & match test UK**



CS 0200



CS 0703



CS 0301



CS 0700



CS 0902



CS 0806



CS 0608



CS 0804



CS 0107



CS 0401



CS 0503



CS 0506

TS3  
**LBA**

Batik

lederplast<sub>s.p.a.</sub>



Composizione / Composition / Composition  
**92,4% PVC**  
**7,6% PL**



Peso / Weight / Poids  
**750±50 g/m<sup>2</sup>**



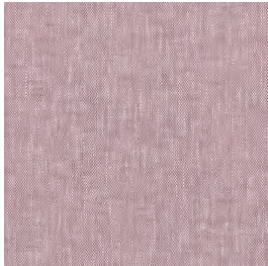
Resistenza alla luce / Light fastness / Résistance à la lumière  
**≥ 7 (EN ISO 105 B02)**



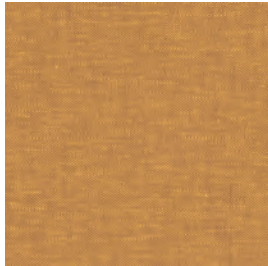
Resistenza allo sfregamento / Fastness to rubbing  
/ Solidité au frottement  
**100.000 Martindale**



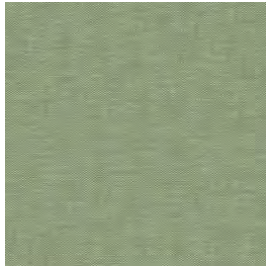
Resistenza al fuoco / Fire retardancy / Réaction au feu  
**CLASSE 1 IT**  
**EN 1021-1/2 cigarette & match test UK**



**LBA 1584**



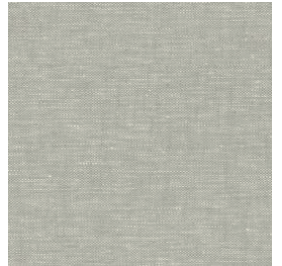
**LBA A57**



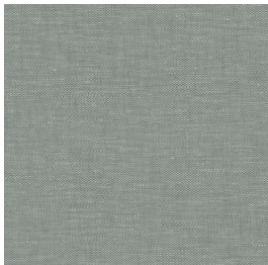
**LBA V019**



**LBA 7088**



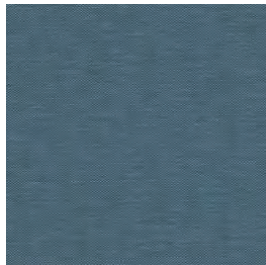
**LBA 2270**



**LBA 7089**



**LBA 2266**



**LBA 8085**