



10year
warranty

Structure pieds panneaux

pieds panneaux en mélamine: épaisseur totale de 90 mm, réalisé avec un seul panneau en aggloméré de 18 mm d'épaisseur (densité 720 kg/m³, classe d'émission de formaldéhyde E1, conforme aux exigences CARB), recouvert de résines mélaminées antireflet et bordé en ABS de 2 mm d'épaisseur, traité selon la technologie du pliage. La partie interne du pied comporte deux trous centraux de Ø 80 mm (un en haut et un en bas) fermés par un bouchon passe câbles pour le passage de l'électrification. Le piètement est équipé de deux pieds qui permettent un réglage de +10 mm pour la mise à niveau.

pieds panneaux en bois: épaisseur totale de 90 mm, composé de deux panneaux en aggloméré de peuplier de 19 mm d'épaisseur, placés à une distance de 50 mm l'un de l'autre et fermés sur les côtés par des traverses en MDF allégé de 50 mm d'épaisseur, formant un cadre fermé. Tous les panneaux sont revêtus sur les deux faces d'un placage de bois naturel et bordés d'un bois de 2 mm d'épaisseur. La cavité interne est remplie de nids d'abeilles en carton, à l'exception de la partie centrale où descend le système d'électrification. Le côté intérieur du pied comporte deux trous centraux de Ø 80 mm (un en haut et un en bas) fermés par un bouchon passe câbles pour le passage des câbles. Le piètement est équipé de deux pieds qui permettent un réglage de +10 mm pour la mise à niveau.

châssis périmétrique: composé de 4 poutres métalliques à section rectangulaire peint avec des poudres époxydiques avec finition gaufrée de couleur noire RAL 9005. Pour renforcer la structure, 2 autres poutres métalliques sont fixées transversalement. Dans la version qui le prévoit, une goulotte câblage en métal est fixé dans l'espace central entre les deux poutres, destiné à accueillir les prises et les câbles. Le châssis métallique périmétrique est dissimulé par un cadre de finition, composé de deux boîtiers assemblés en aluminium extrudé.

Voile de fond structurelle

mélamine: réalisé en aggloméré ép. 18 mm (densité 720 kg/m³, classe d'émission de formaldéhyde E1, conforme aux exigences CARB), recouvert de résines mélaminées antireflet et bordé en ABS (ép. 2 mm avec bords arrondis).

bois: réalisé en aggloméré ép. 19 mm (densité 720 kg/m³, classe d'émission de formaldéhyde E1, conforme aux exigences CARB), plaqué sur les deux faces avec un placage de bois naturel et bordé de bois de 2 mm d'épaisseur.

simili-cuir: réalisé en mdf de 19 mm d'épaisseur, revêtu en simili-cuir.

Plateau

mélamine: réalisé en aggloméré ép. 18 mm (densité 720 kg/m³, classe d'émission de formaldéhyde E1, conforme aux exigences CARB), recouvert de résines mélaminées antireflet et bordé en ABS (ép. 2 mm avec bords arrondis).

bois: réalisé en aggloméré ép. 20 mm (densité 720 kg/m³, classe d'émission de formaldéhyde E1, conforme aux exigences CARB), plaqué sur les deux faces avec du bois naturel et peint sur la face visible, brut sur l'envers. Le bord du périmètre est constitué d'un placage de bois de 2 mm d'épaisseur.

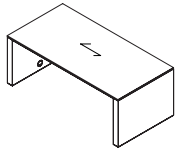
Plateau avec panneau central mobile

Les panneaux peuvent être réalisés en mélamine, en placage ou en mdf revêtu en simili-cuir. Le plateau est pourvu d'un profil porte-stylo en aluminium brossé ou peint selon la finition du pied. Sur le profilé se trouvent deux ouvertures qui garantissent la sortie des câbles. Le panneau central du plateau est mobile, monté sur deux guides métalliques qui lui permettent de glisser vers l'opérateur (sliding-top). Le plateau coulissant est équipé d'un dispositif de sécurité pour l'ouverture et la fermeture. L'excursion du plateau est de 13 cm pour permettre l'inspection du plateau de câblage.

Scrivania con gambe pannellate in melaminico

Desk with melamine panelled legs

Bureau avec pieds panneaux en mélamine



M - Melaminico - Melamine - Mélamine



MOB - Olmo chiaro
Light elm
Orme clair



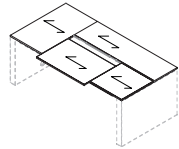
MRO - Rovere
Oak - Chêne



MNC - Noce
Walnut - Noyer



MFN - Frassino nero
Black ash
Frêne noir



M - Formelle in melaminico - Melamine tiles - Sections en mélamine



MOB - Olmo chiaro
Light elm
Orme clair



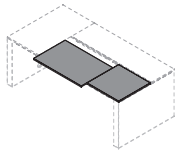
MRO - Rovere
Oak - Chêne



MNC - Noce
Walnut - Noyer



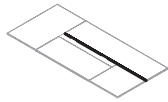
MFN - Frassino nero
Black ash
Frêne noir



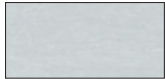
Formelle in mdf rivestite in ecopelle - Eco-leather upholstered mdf tiles - Sections en mdf revêtu en simili-cuir



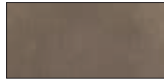
Cat. D - Skill



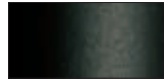
AL - Profilo in alluminio - Aluminium profile - Profil en aluminium



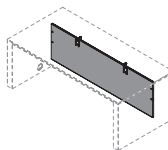
ZAL - Alluminio spazzolato
Brushed aluminium
Aluminium brossé



ZBR - Bronzo spazzolato
Brushed bronze
Bronze brossé



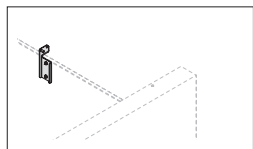
ZGNE - Verniciato goffrato nero
Black embossed painted
Verni gaufré noir
RAL 9005



Cat. D (Skill) - Gonna rivestita in ecopelle - Eco-leather upholstered modesty panel - Voile de fond revêtue en simili-cuir



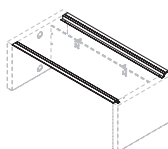
Cat. D - Skill



AC - Staffe in acciaio - Steel supports - Équerres en acier



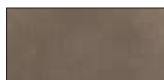
ZGNE - Verniciato goffrato nero
Black embossed painted
Verni gaufré noir
RAL 9005



AL - Cornice di finitura in alluminio - Finishing aluminium frame - Cadre de finition en aluminium



ZAL - Alluminio spazzolato
Brushed aluminium
Aluminium brossé



ZBR - Bronzo spazzolato
Brushed bronze
Bronze brossé



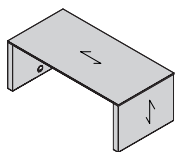
ZGNE - Verniciato goffrato nero
Black embossed painted
Verni gaufré noir
RAL 9005

Albano

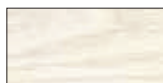
Scrivania con gambe pannellate in legno

Desk with veneer panelled legs

Bureau avec pieds panneaux en bois



W - Legno - Veneer - Bois



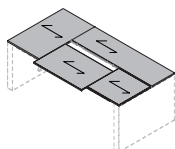
WBI - Frassino bianco
White ash
Frêne blanc



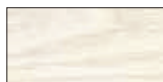
WNS - Noce scuro
Dark walnut
Noyer foncé



WFN - Frassino nero
Black ash
Frêne noir



W - Formelle in legno - Veneer tiles - Sections en bois



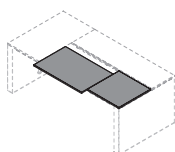
WBI - Frassino bianco
White ash
Frêne blanc



WNS - Noce scuro
Dark walnut
Noyer foncé



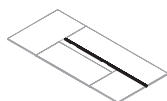
WFN - Frassino nero
Black ash
Frêne noir



Formelle in mdf rivestite in ecopelle - Eco-leather upholstered mdf tiles - Sections en mdf revêtu en simili-cuir



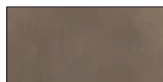
Cat. D - Skill



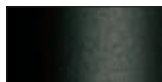
AL - Profilo in alluminio - Aluminium profile - Profil en aluminium



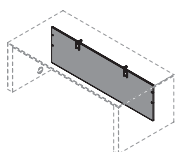
ZAL - Alluminio spazzolato
Brushed aluminium
Aluminium brossé



ZBR - Bronzo spazzolato
Brushed bronze
Bronze brossé



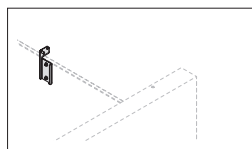
ZGNE - Verniciato goffrato nero
Black embossed painted
Verni gaufré noir
RAL 9005



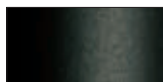
Cat. D (Skill) - Gonna rivestita in ecopelle - Eco-leather upholstered modesty panel - Voile de fond revêtue en simili-cuir



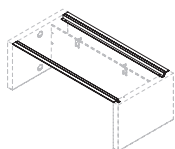
Cat. D - Skill



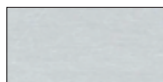
AC - Staffe in acciaio - Steel supports - Équerres en acier



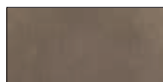
ZGNE - Verniciato goffrato nero
Black embossed painted
Verni gaufré noir
RAL 9005



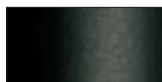
AL - Cornice di finitura in alluminio - Finishing aluminium frame - Cadre de finition en aluminium



ZAL - Alluminio spazzolato
Brushed aluminium
Aluminium brossé



ZBR - Bronzo spazzolato
Brushed bronze
Bronze brossé



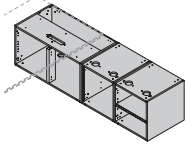
ZGNE - Verniciato goffrato nero
Black embossed painted
Verni gaufré noir
RAL 9005

Albano

Mobile di servizio portante

Supporting service unit

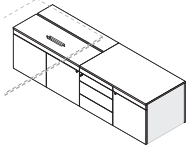
Meuble de service portant



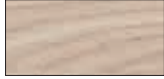
M - Scocca interna in melaminico - Melamine internal structure - Structure interne en mélamine



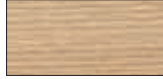
MNV - Nero velluto
Black velvet
Velours noir



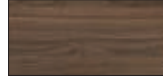
M - Top, schiena e frontali in melaminico - Melamine top, back and fronts - Dessus, dos et façades en mélamine



MOB - Olmo chiaro
Light elm
Orme clair



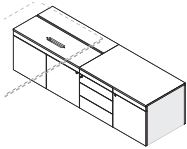
MRO - Rovere
Oak - Chêne



MNC - Noce
Walnut - Noyer



MFN - Frassino nero
Black ash
Frêne noir



W - Top, schiena e frontali in legno - Veneer top, back and fronts - Dessus, dos et façades en bois



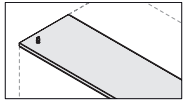
WBI - Frassino bianco
White ash
Frêne blanc



WNS - Noce scuro
Dark walnut
Noyer foncé



WFN - Frassino nero
Black ash
Frêne noir



Cat. D (Skill) - Top secretaire rivestito in ecopelle - Eco-leather upholstered top secretaire - Top secretaire revêtu en simili-cuir

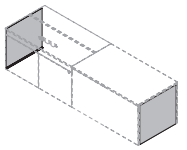


Cat. D - Skill

Coppia carter di finitura in alluminio

Pair of aluminium finishing covers

Paire de couverture de finition en aluminium



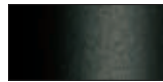
AL - Alluminio - Aluminium - Aluminium



ZAL - Alluminio spazzolato
Brushed aluminium
Aluminium brossé



ZBR - Bronzo spazzolato
Brushed bronze
Bronze brossé

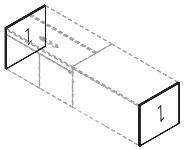


ZGNE - Verniciato goffrato nero
Black embossed painted
Verni gaufré noir
RAL 9005

Coppia di fianchi di finitura

Pair of finishing sides

Paire de côtés de finition



M - Melaminico - Melamine - Mélamine



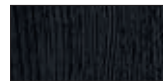
MOB - Olmo chiaro
Light elm
Orme clair



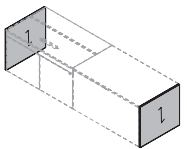
MRO - Rovere
Oak - Chêne



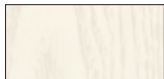
MNT - Noce canaletto
American walnut
Noyer américain



MFN - Frassino nero
Black ash
Frêne noir



W - Legno - Veneer - Bois



WBI - Frassino bianco
White ash
Frêne blanc



WNS - Noce scuro
Dark walnut
Noyer foncé



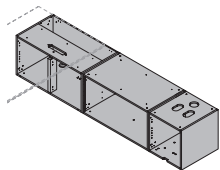
WFN - Frassino nero
Black ash
Frêne noir

Albano

Mobile di servizio portante predisposto per piano regolabile in altezza

Supporting service unit pre-set for height-adjustable top

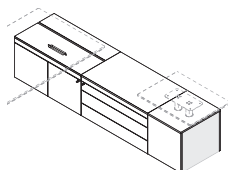
Meuble de service portant avec prédisposition pour plateau réglable en hauteur



M - Scocca interna in melaminico - Melamine internal structure - Structure interne en mélamine



MNV - Nero velluto
Black velvet
Velours noir



M - Top, schiena e frontali in melaminico - Melamine top, back and fronts - Dessus, dos et façades en mélamine



MOB - Olmo chiaro
Light elm
Orme clair



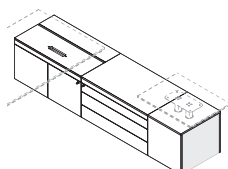
MRO - Rovere
Oak - Chêne



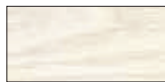
MNC - Noce
Walnut - Noyer



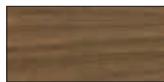
MFN - Frassino nero
Black ash
Frêne noir



W - Top, schiena e frontali in legno - Veneer top, back and fronts - Dessus, dos et façades en bois



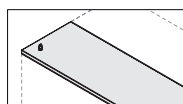
WBI - Frassino bianco
White ash
Frêne blanc



WNS - Noce scuro
Dark walnut
Noyer foncé



WFN - Frassino nero
Black ash
Frêne noir



P

Cat. D (Skill) - Top secretaire rivestito in ecopelle - Eco-leather upholstered top secretaire - Top secretaire revêtu en simili-cuir

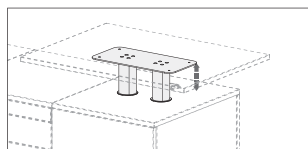


Cat. D - Skill

Colonne regolabili in altezza per mobile di servizio con piano regolabile in altezza

Height-adjustable columns for service unit with height-adjustable top

Colonnes réglables en hauteur pour meuble de service avec plateau réglable en hauteur



MET - Metallo - Metal - Métal



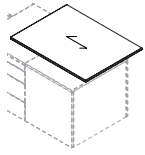
NE - Nero
Black - Noir
RAL 9005

Albano

Piano di servizio per colonne regolabili in altezza

Service top for height-adjustable columns

Plateau de service pour colonnes réglables en hauteur



sp./th. 18 mm

M - Melaminico - Melamine - Mélamine



MOB - Olmo chiaro
Light elm
Orme clair



MRO - Rovere
Oak - Chêne



MNC - Noce
Walnut - Noyer



MFN - Frassino nero
Black ash
Frêne noir

W - Legno - Veneer - Bois



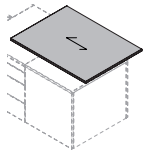
WBI - Frassino bianco
White ash
Frêne blanc



WNS - Noce scuro
Dark walnut
Noyer foncé



WFN - Frassino nero
Black ash
Frêne noir



sp./th. 20 mm

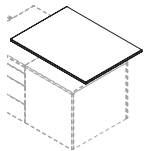
HL - Hpl



HLCB - Calacatta bianco
White Calacatta
Calacatta blanc



HLMZ - Marmo zebra marrone
Brown zebra marble
Marbre marron zébré

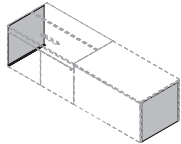


sp./th. 18 mm

Coppia carter di finitura in alluminio

Pair of aluminium finishing covers

Paire de couverture de finition en aluminium



AL - Alluminio - Aluminium - Aluminium



ZAL - Alluminio spazzolato
Brushed aluminium
Aluminium brossé



ZBR - Bronzo spazzolato
Brushed bronze
Bronze brossé

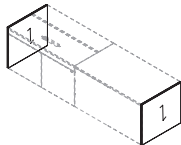


ZGNE - Verniciato goffrato nero
Black embossed painted
Verni gaufré noir
RAL 9005

Coppia di fianchi di finitura

Pair of finishing sides

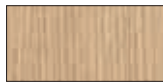
Paire de côtés de finition



M - Melaminico - Melamine - Mélamine



MOB - Olmo chiaro
Light elm
Orme clair



MRO - Rovere
Oak - Chêne



MNT - Noce canaletto
American walnut -
Noyer américain



MFN - Frassino nero
Black ash
Frêne noir

W - Legno - Veneer - Bois



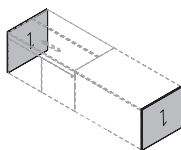
WBI - Frassino bianco
White ash
Frêne blanc



WNS - Noce scuro
Dark walnut
Noyer foncé



WFN - Frassino nero
Black ash
Frêne noir

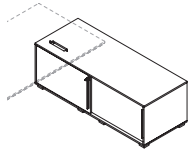


Albano

Mobile di servizio portante

Supporting service unit

Meuble de service portant



M - Melaminico - Melamine - Mèlamine



MOB - Olmo chiaro
Light elm
Orme clair



MRO - Rovere
Oak - Chêne



MNC - Noce
Walnut - Noyer



MFN - Frassino nero
Black ash
Frêne noir

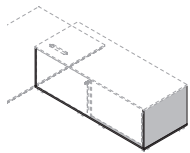


MNV - Nero velluto
Black velvet
Velours noir

Mobile di servizio portante con scocca in melaminico e top e frontali in legno

Supporting service unit with melamine structure and veneer top and fronts

Meuble de service portant avec structure en mélamine et dessus et façades en bois



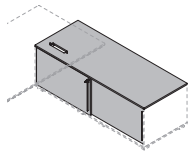
M - Scocca in melaminico - Melamine structure - Structure en mélamine



MBI - Bianco
White - Blanc



MNV - Nero velluto
Black velvet
Velours noir



W - Top e frontali in legno - Veneer top and fronts - Dessus et façades en bois



WBI - Frassino bianco
White ash
Frêne blanc



WNS - Noce scuro
Dark walnut
Noyer foncé

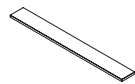


WFN - Frassino nero
Black ash
Frêne noir

Maniglia in metallo (Metal) - Spike/Alplus/Velvet/Asset/Vogue/Pop (B)

Metal handle (Metal) - Spike/Alplus/Velvet/Asset/Vogue/Pop (B)

Poignée en métal (Metal) - Spike/Alplus/Velvet/Asset/Vogue/Pop (B)



MET - Metallo - Metal - Métal



BI - Bianco
White - Blanc
RAL 9010



AO - Alluminio
Aluminium
Aluminium



NE - Nero
Black - Noir
RAL 9005



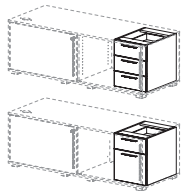
CR - Cromo lucido
Polished chrome
Chrome poli

Albano

Elementi interni in melaminico per mobile di servizio portante

Melamine internal elements for supporting service unit

Éléments intérieurs en mélamine pour meuble de service portant



M - Melaminico - Melamine - Mélamine



MBI - Bianco
White - Blanc



MOB - Olmo chiaro
Light elm
Orme clair



MRO - Rovere
Oak - Chêne



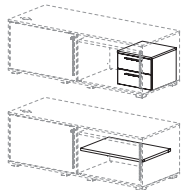
MNC - Noce
Walnut - Noyer



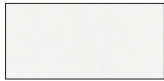
**MFN - Frassino
nero**
Black ash
Frêne noir



MNV - Nero velluto
Black velvet
Velours noir



M - Melaminico - Melamine - Mélamine



MBI - Bianco
White - Blanc



MOB - Olmo chiaro
Light elm
Orme clair



MRO - Rovere
Oak - Chêne



MNC - Noce
Walnut - Noyer



**MFN - Frassino
nero**
Black ash
Frêne noir

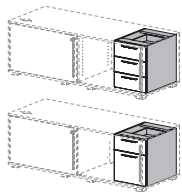


MNV - Nero velluto
Black velvet
Velours noir

Elementi interni con scocca in melaminico e frontali in legno per mobile di servizio portante

Internal elements with melamine structure and veneer fronts for supporting service unit

Éléments intérieurs avec structure en mélamine et façades en bois pour meuble de service portant



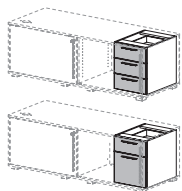
M - Scocca in melaminico - Melamine structure - Structure en mélamine



MBI - Bianco
White - Blanc



MNV - Nero velluto
Black velvet -
Velours noir



W - Frontali in legno - Veneer fronts - Façades en bois



**WBI - Frassino
bianco**
White ash - Frêne
blanc



WNS - Noce scuro
Dark walnut - Noyer
foncé

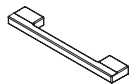


**WFN - Frassino
nero**
Black ash - Frêne
noir

Maniglia in metallo (Metal)

Metal handle (Metal)

Poignée en métal (Metal)



MET - Metallo - Metal - Métal



BI - Bianco
White - Blanc
RAL 9010



AO - Alluminio
Aluminium
Aluminium



NE - Nero
Black - Noir
RAL 9005



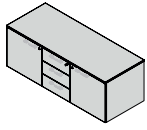
CR - Cromo lucido
Polished chrome
Chrome poli

Albano

Mobile di servizio in melaminico

Melamine service unit

Meuble de service en mélamine



M - Melaminico - Melamine - Mélamine



MOB - Olmo chiaro
Light elm
Orme clair



MRO - Rovere
Oak - Chêne



MNC - Noce
Walnut - Noyer



MFN - Frassino nero
Black ash
Frêne noir

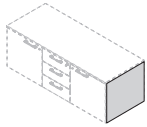


MNV - Nero velluto
Black velvet
Velours noir

Mobile di servizio con scocca in melaminico

Service unit with melamine structure and veneer top and fronts

Meubles de service avec structure en mélamine et dessus et façades en bois



M - Scocca in melaminico - Melamine structure - Structure en mélamine

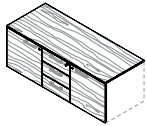


MBI - Bianco
White - Blanc



MNV - Nero velluto
Black velvet
Velours noir

W - Top e frontali in legno - Veneer top and fronts - Dessus et façades en bois



WBI - Frassino bianco
White ash
Frêne blanc



WNS - Noce scuro
Dark walnut
Noyer foncé

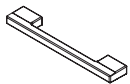


WFN - Frassino nero
Black ash
Frêne noir

Maniglia in metallo (Metal)

Metal handle (Metal)

Poignée en métal (Metal)



MET - Metallo - Metal - Métal



BI - Bianco
White - Blanc
RAL 9010



AO - Alluminio
Aluminium
Aluminium



NE - Nero
Black - Noir
RAL 9005

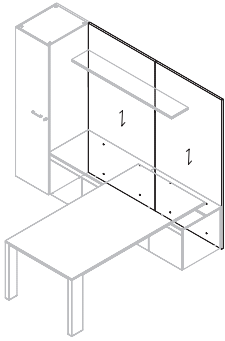


CR - Cromo lucido
Polished chrome
Chrome poli

Albano

Composizione

Composition
Composition



M - Pannelli verticali in melaminico - Vertical melamine panels - Panneaux verticaux en mélamine



MBI - Bianco
White - Blanc



MTR - Tortora
Dove - Gris taupe



MCE - Cemento
Concrete - Béton
TEXTURE MATERICA
TEXTURED EFFECT



MOB - Olmo chiaro
Light elm
Orme clair



MRO - Rovere
Oak - Chêne



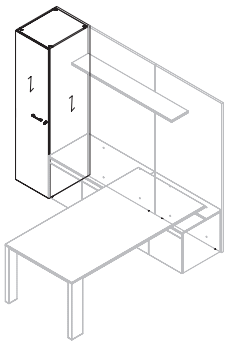
MNC - Noce
Walnut - Noyer



MFN - Frassino nero
Black ash
Frêne noir



MNV - Nero velluto
Black velvet
Velours noir



M - Armadio in melaminico - Melamine cabinet - Armoire en mélamine



MOB - Olmo chiaro
Light elm
Orme clair



MRO - Rovere
Oak - Chêne



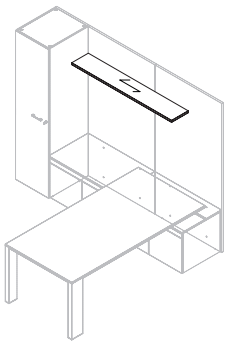
MNC - Noce
Walnut - Noyer



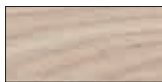
MFN - Frassino nero
Black ash
Frêne noir



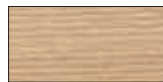
MNV - Nero velluto
Black velvet
Velours noir



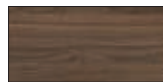
M - Mensola in melaminico - Melamine shelf - Étagère en mélamine



MOB - Olmo chiaro
Light elm
Orme clair



MRO - Rovere
Oak - Chêne



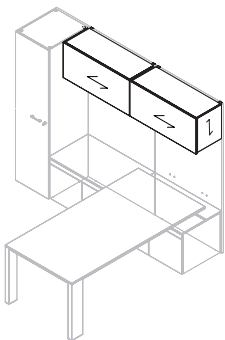
MNC - Noce
Walnut - Noyer



MFN - Frassino nero
Black ash
Frêne noir



MNV - Nero velluto
Black velvet
Velours noir



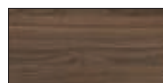
M - Pensili in melaminico - Melamine hanging units - Meubles suspendus en mélamine



MOB - Olmo chiaro
Light elm
Orme clair



MRO - Rovere
Oak - Chêne



MNC - Noce
Walnut - Noyer



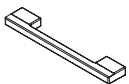
MFN - Frassino nero
Black ash
Frêne noir



MNV - Nero velluto
Black velvet
Velours noir

Maniglia in metallo (Metal)

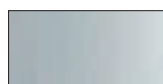
Metal handle (Metal)
Poignée en métal (Metal)



MET - Metallo - Metal - Métal



BI - Bianco
White - Blanc
RAL 9010



AO - Alluminio
Aluminium
Aluminium



NE - Nero
Black - Noir
RAL 9005

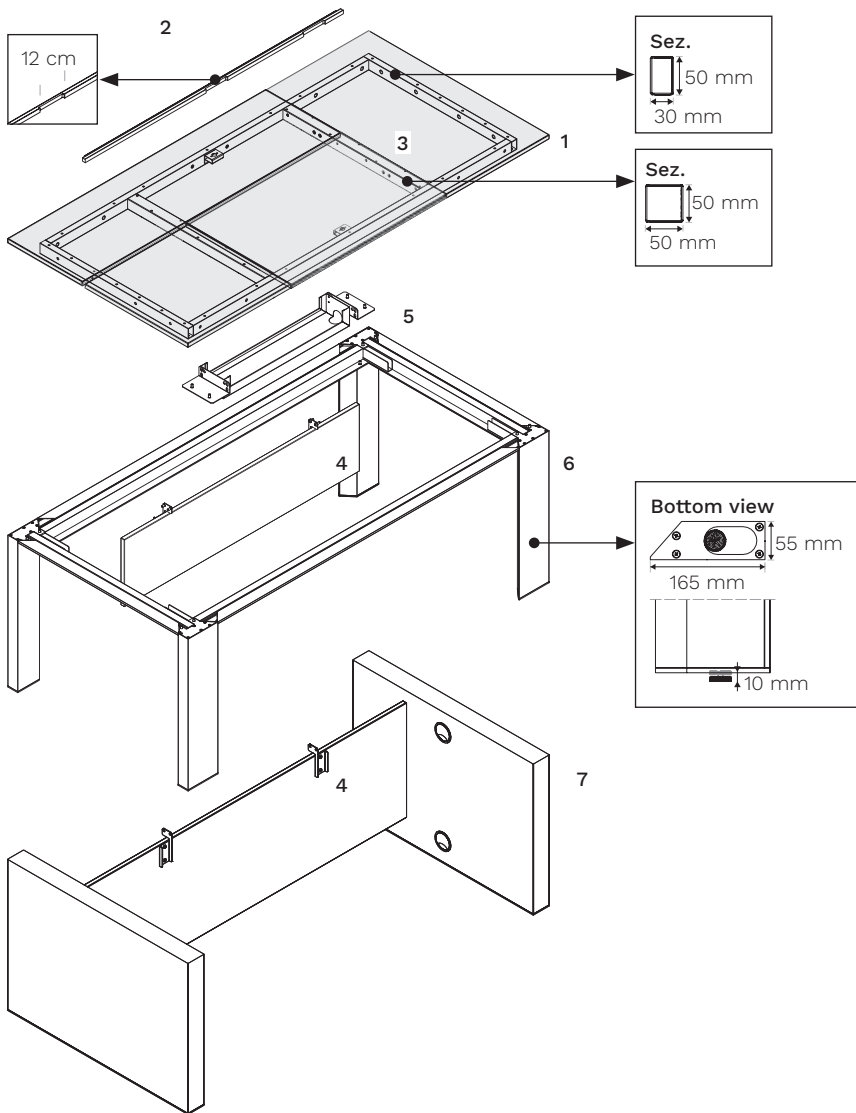


CR - Cromo lucido
Polished chrome
Chrome poli

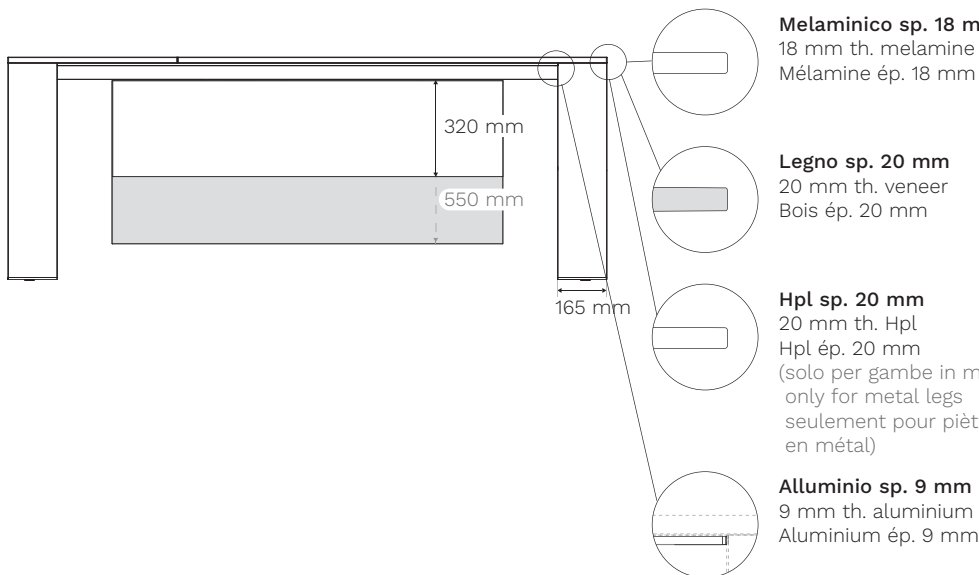
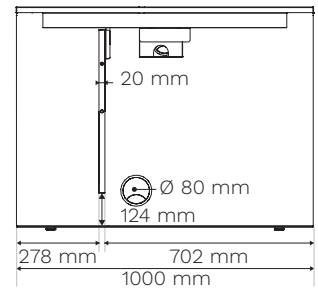
Albano

Dati tecnici
 Technical data
 Données techniques

Scrivania
 Desk
 Bureau



- 1. Piano**
Top
Plateau
- 2. Profilo in alluminio**
Aluminum profile
Profil en aluminium
- 3. Telaio strutturale**
Structural frame
Châssis structurel
- 4. Gonna**
Modesty panel
Voile de fond
- 5. Vasca cablaggio**
Cable tray
Goulotte câblage
- 6. Gambe in metallo**
Metal legs
Piètement en métal
- 7. Gambe pannellate**
Panelled legs
Pieds panneaux



Melaminico sp. 18 mm

18 mm th. melamine
 Mélamine ép. 18 mm

Legno sp. 20 mm

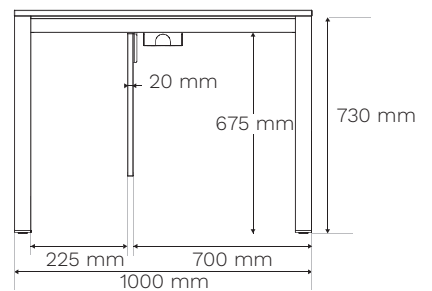
20 mm th. veneer
 Bois ép. 20 mm

Hpl sp. 20 mm

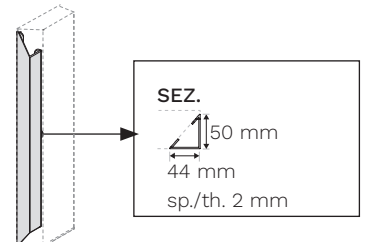
20 mm th. Hpl
 Hpl ép. 20 mm
 (solo per gambe in metallo
 only for metal legs
 seulement pour piètement
 en métal)

Alluminio sp. 9 mm

9 mm th. aluminium
 Aluminium ép. 9 mm



OPTION



Albano

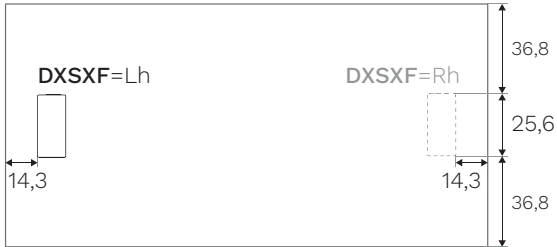
Posizioni flap / tappo passacavi

Top access / lid for cable outlet positions

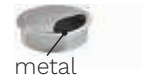
Position du top access / bouchon passe câbles



cod. EEFL01



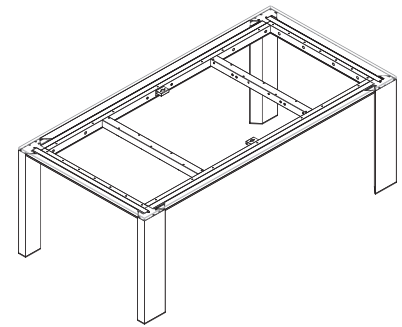
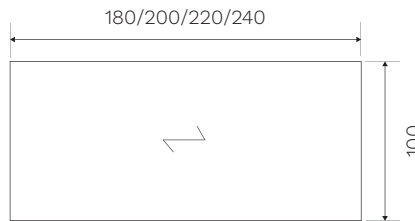
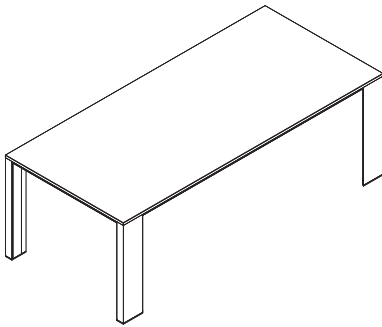
cod. CX9200R



Scrivania

Desk

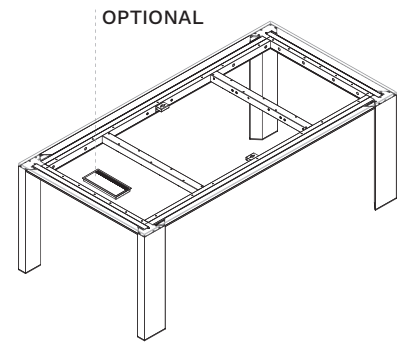
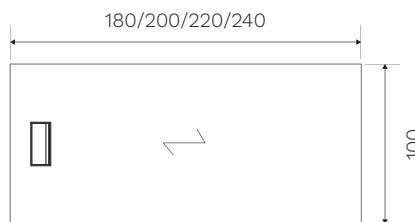
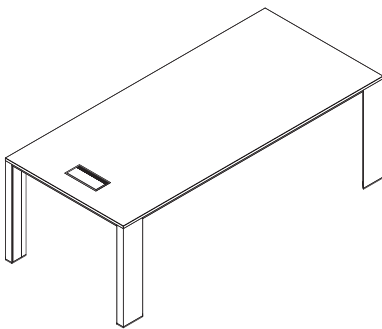
Bureau



Scrivania con flap

Desk with top access

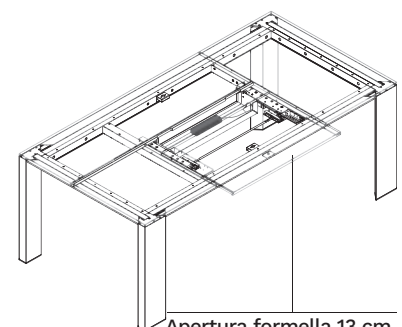
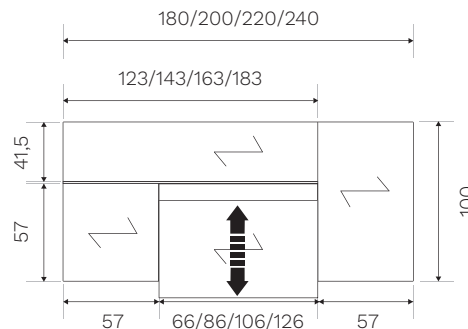
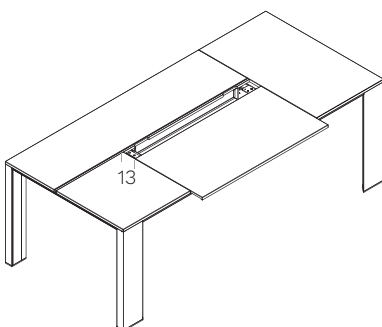
Bureau avec top access



Scrivania con piano a formelle e sliding-top

Desk with tile top and sliding-top

Bureau avec plateau à sections et plateau coulissant



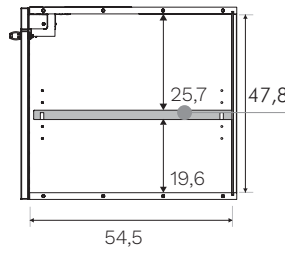
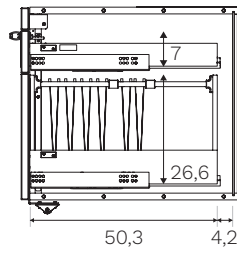
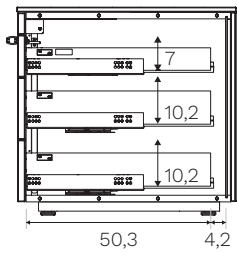
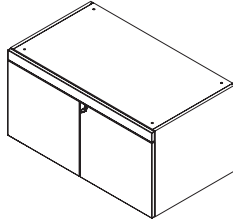
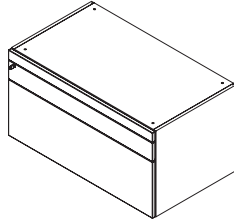
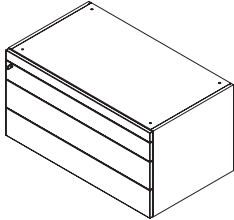
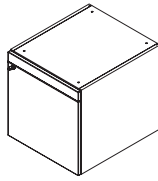
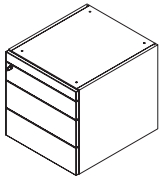
Apertura formella 13 cm
5 1/8 opening tile
Overture section 13 cm

Albano

Mobili di servizio

Service units

Meubles de service



Cassetti in multistrato di betulla laccato nero - Apertura cassetto PUSH PULL


Drawers made of birch plywood black painted - PUSH PULL drawer opening

Tiroirs en contreplaqué de bouleau peint en noir - Tiroir avec ouverture PUSH PULL

Ripiano spostabile sp. 25 mm (5 posizioni, passo 32)

25 mm th. movable shelf (with 5 adjustable positions, step 32)

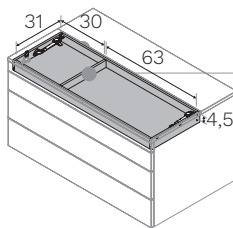
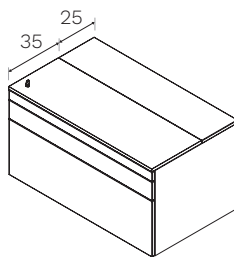
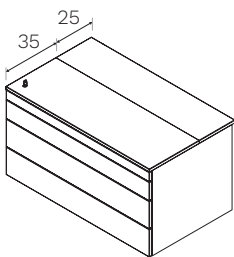
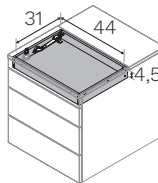
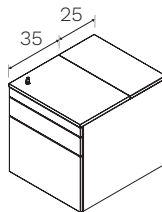
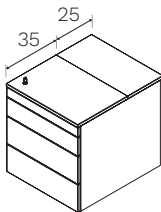
Étagère amovible ép. 25 mm (réglables en 5 positions, pas 32)

 **Max 25 kg**
Max 55.12 lb

Mobili di servizio con "TOP SECRETAIRE"

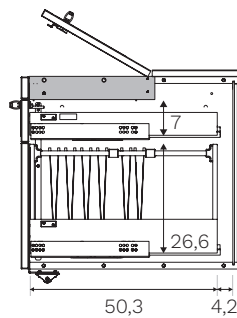
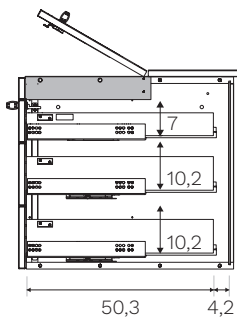
Service units with "TOP SECRETAIRE"

Meubles de service avec "TOP SECRETAIRE"



Separatore fisso

Fixed divider
Séparateur fixe

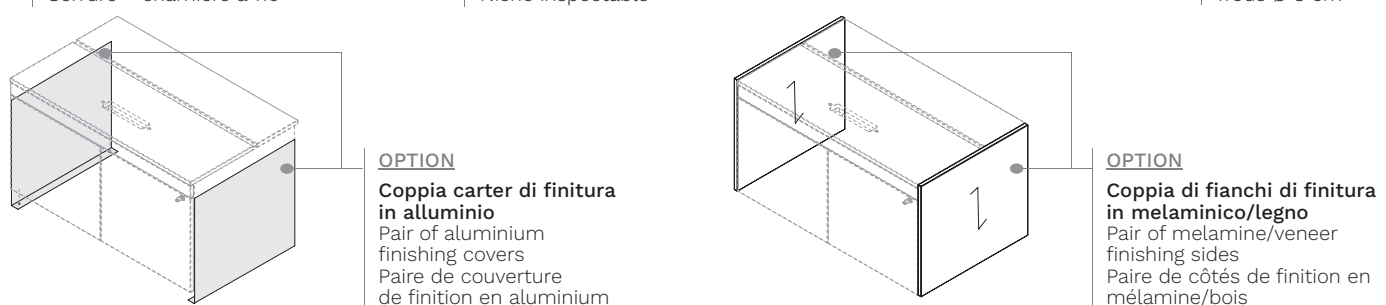
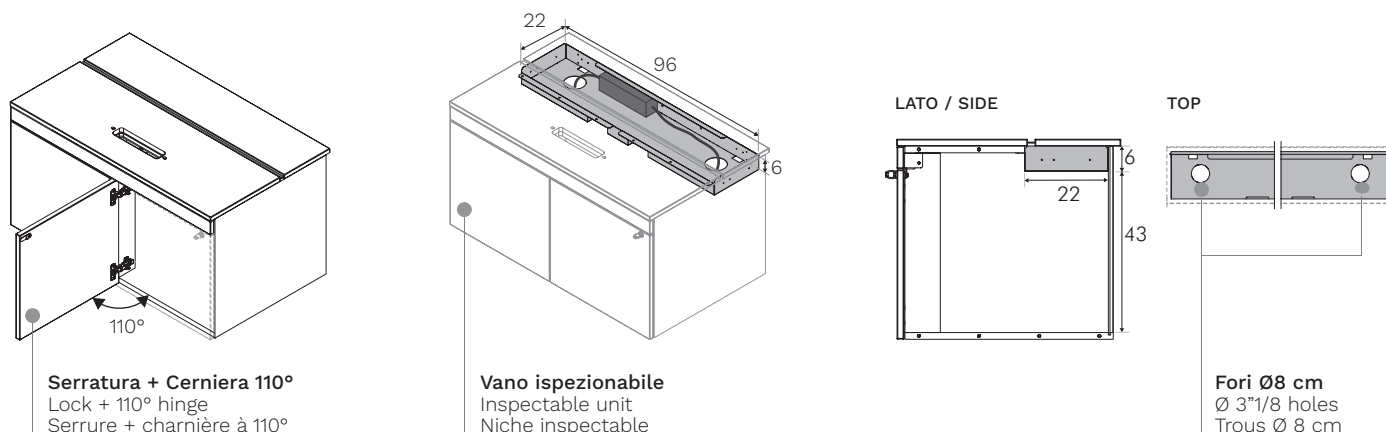


Albano

Mobile di servizio portante con top di finitura - Vano tecnico ispezionabile con anta battente, serratura e cerniera a 110°

Supporting service unit with finishing top - Inspectable technical unit with hinged door, lock and 110° hinge

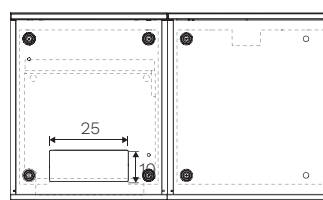
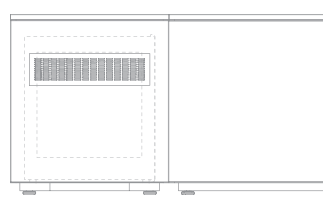
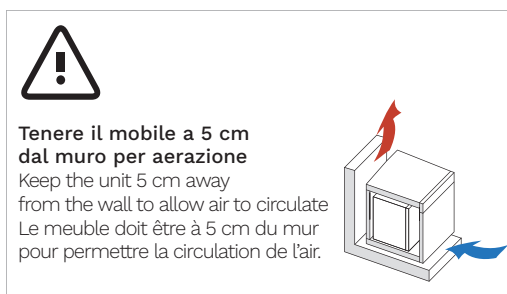
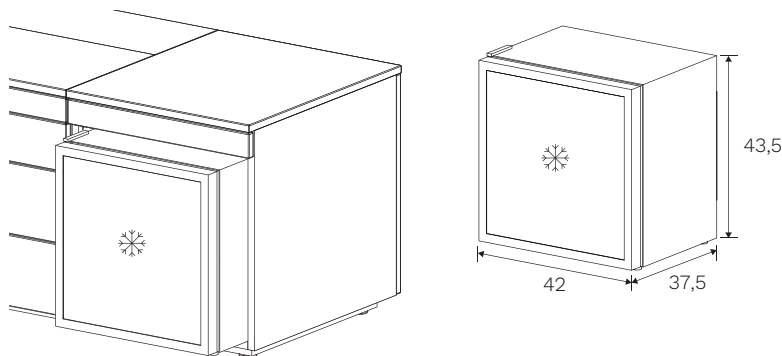
Meuble de service portant avec dessus de finition - Niche technique inspectable avec porte battante, serrure et charnière à 110°



Elemento di servizio con frigorifero (230V-115V) - Tenere il mobile a 5 cm dal muro per aerazione

Service unit with fridge (230V-115V) - Keep the service unit 5 cm away from the wall to allow air to circulate

Meubles de service avec réfrigérateur (230V-115V) - Le meuble doit être à 5 cm du mur pour permettre la circulation de l'air



Capacità totale Total volume - Volume utile total	25 l
Peso Weight - Poids	12 Kg 26.46 lbs
Tensione di alimentazione Power supply voltage Alimentation	Option 1 : 230 V (50 Hz)
	Option 2 : 115 V (60 Hz)

Albano

Elettrificazione mobile di servizio portante predisposto per scrivania appesa

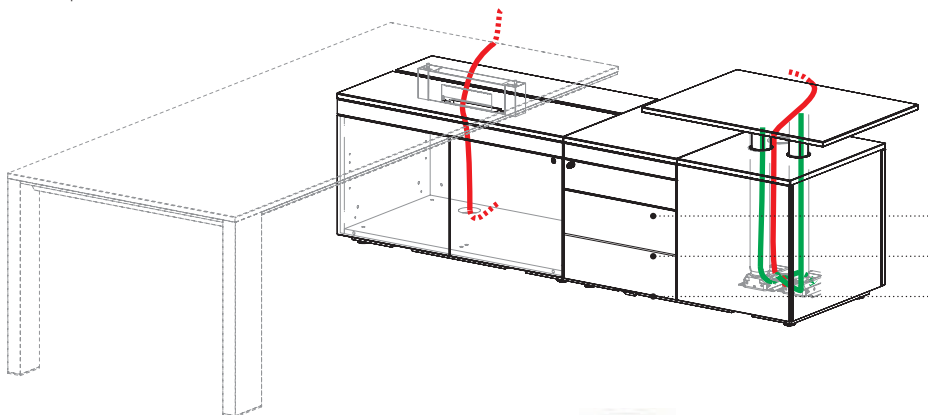
Passage of cables for supporting service unit equipped for hanging desk

Électrification du meuble de service portant avec prédisposition pour bureau suspendu

Lato operatore

Operator side

Côte opérateur

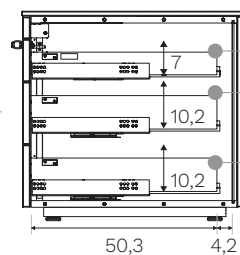
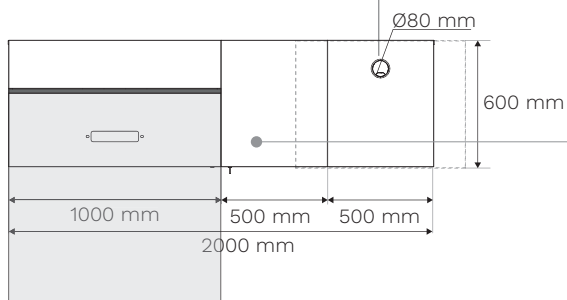


Cassetti con apertura PUSH PULL
 PUSH PULL opening drawers
 Tiroirs avec ouverture PUSH PULL



INCLUDED

CX9200R



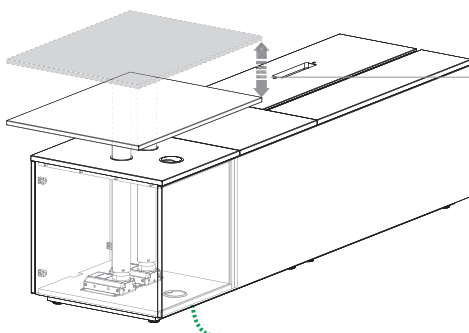
Cassetti in multistrato di betulla laccato nero - Cassetto con apertura PUSH PULL

Drawers made of birch plywood black painted - PUSH PULL opening drawer
 Tiroirs en contreplaqué de bouleau peint en noir - Tiroir avec ouverture PUSH PULL

Vista posteriore

Rear view

Vue arrière



Piano di servizio regolabile in altezza (fino a H. 105 cm)

Height-adjustable service top (up to H. 41"3/8)

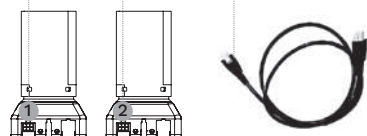
Plateau de service réglage en ht. (jusqu'à Ht. 105 cm)

Max 30 kg
 Max 66,2 lb

Centralina di controllo (EU 230V, UK/US 100-240V)

Control Box (EU 230V, UK/US 100-240V)

Unité de commande (EU 230V, UK/US 100-240V)



(2x) Colonne motorizzate + (2x) Cavo motore
 (2x) Powered columns + (2x) Motor cable
 (2x) Colonnes motorisées + (2x) Câble du moteur

AC
Cavo di alimentazione
 Power cable
 Câble d'alimentation



Schuko UK US
 230V 240V 120V

A1
Adattatore Bluetooth + Telecomando
 Bluetooth adapter + Remote control
 Adaptateur Bluetooth + Télécommande

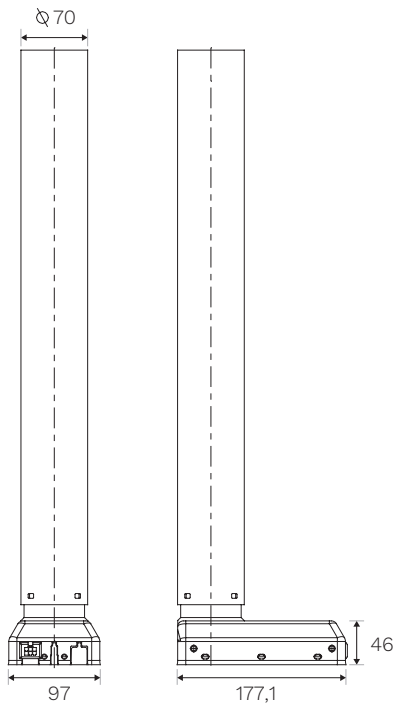


Albano

Colonne regolabili in altezza per piano di servizio

Height-adjustable columns for service top

Colonnes réglables en hauteur pour plateau de service



Caratteristiche colonna

Column features

Design compatto con guida e attuatore perfettamente integrati
Compact design where guide and actuator functions are an integrated unit

Colonna rinforzata e scatola motore ottimizzata per una maggiore stabilità
Reinforced column and optimised motor housing design for extra strength and stability

Connettore montato per una semplice connessione con centralina CBD e cavo motore separato
Plug mounted on the column for connection to the CBD with a separate motor cable

Dati tecnici colonna

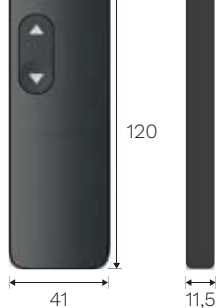
Column technical data

Velocità Speed	max 38 mm/s
Lunghezza corsa standard Standard stroke length	500 mm
Peso weight	7,5 kg per colonna 7,5 kg per column
Dimensioni colonna Column dimensions	profilo esterno: 70 mm _ profilo interno: 63,5 mm outer profile: 70 mm _ inner profile: 63,5 mm
Dimensione scatola motore Dimension motor housing	177 x 97 x 46 mm
Colore _Color	nero RAL 9005 _ black RAL 9005
Ciclo di lavoro Duty cycle	10% - 6 min. per ora o 2 min. a uso continuo a pie no carico 10% - 6 min. per hour or 2 min. of continuous use at full load
Temperatura d'esercizio Ambient temperature	da +10°C a +40°C from +10°C to +40°C

Telecomando

Remote control

Télécommande



Centralina di controllo

Control Box

Unité de commande



EU

UK/US

Caratt. telecomando

Remote control features

Controllo 1 canale
1 reference handset controlling

Retro magnetico
Magnetic backside

Tasti concavi e convessi per un utilizzo intuitivo
Concave and convex buttons for intuitive use

Batteria CR2032 sostituibile
Replaceable CR2032 battery

Caratteristiche centralina di controllo

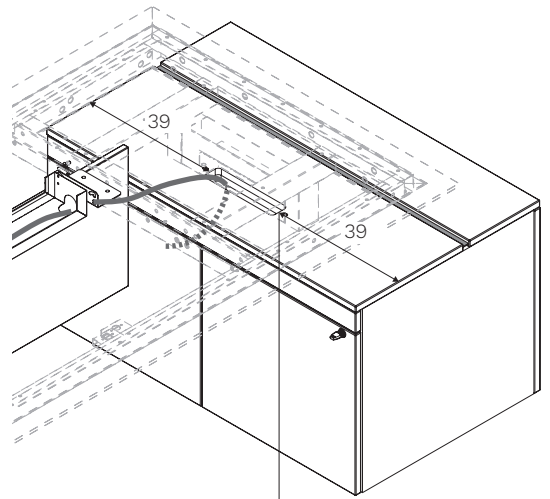
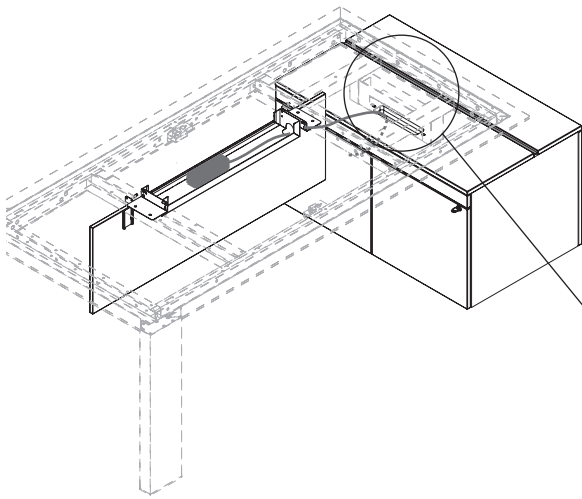
Control box features

EU: 230 V
UK - US: 100-240V

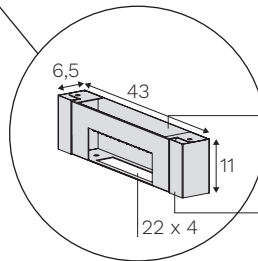
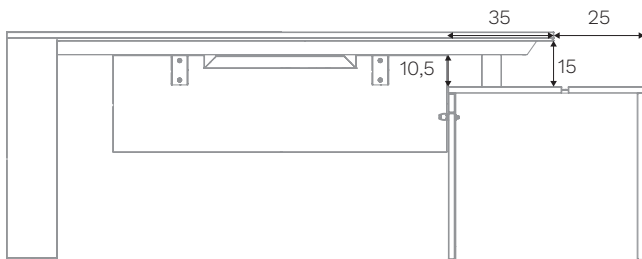
Sistema basato su comunicazione a radiofrequenza
System based on radiofrequency communication

Albano

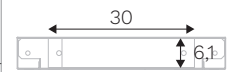
Esempi di elettrificazione
Examples for wire management
Exemples d'électrification



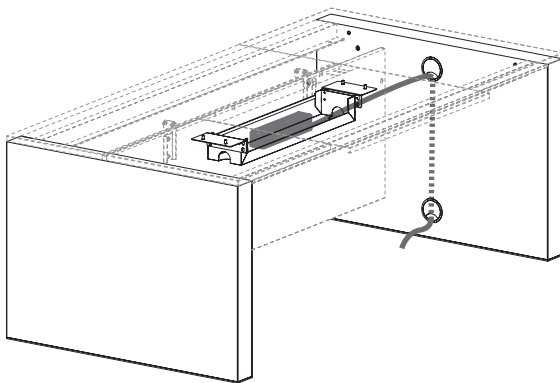
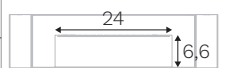
5 x 22



TOP

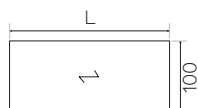
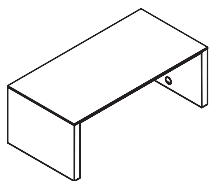


FRONT



Albano

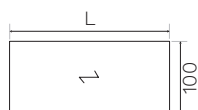
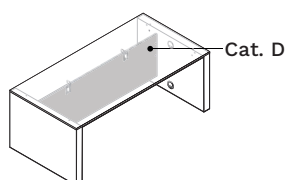
Scrivania pannellata in melaminico - Cornice di finitura: alluminio spazzolato (ZAL), verniciato goffrato nero (ZGNE), bronzo spazzolato (ZBR)
 Melamine panelled desk - Finishing frame: brushed aluminium (ZAL), black embossed painted (ZGNE), brushed bronze (ZBR)
 Bureau pieds panneaux en mélamine - Cadre de finition: aluminium brossé (ZAL), verni gaufré noir (ZGNE), bronze brossé (ZBR)



L. W.	P. D.	H. H.	COD.	kg lb	m ³ ft ³
180 70 ⁷ / ₈	100 39 ³ / ₈	75 29 ¹ / ₂	ON0568	165,40 365.00	0,526 18.60
200 78 ³ / ₄	100 39 ³ / ₈	75 29 ¹ / ₂	ON0570	171,00 377.00	0,564 19.90
220 86 ⁵ / ₈	100 39 ³ / ₈	75 29 ¹ / ₂	ON0572	176,50 389.00	0,601 21.20
240 94 ¹ / ₂	100 39 ³ / ₈	75 29 ¹ / ₂	ON0574	187,10 412.00	0,638 22.50

Maggiorazioni - Supplement - Supplément			
Foratura per piano per 1 flap (non incluso) Drilling for top for 1 top access (not included) Perçage pour plateau pour 1 top access (pas inclus)	APP		
Foratura Ø 8 cm per piano Ø 3 ¹ / ₈ drilling for top Perçage Ø 8 cm pour plateau	APP		

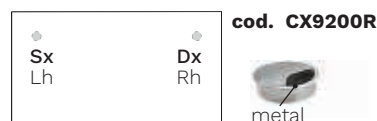
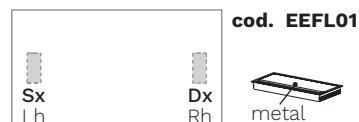
Scrivania pannellata in melaminico con gonna strutturale rivestita in ecopelle (M + Cat. D) - Cornice di finitura: alluminio spazzolato (ZAL), verniciato goffrato nero (ZGNE), bronzo spazzolato (ZBR)
 Melamine panelled desk with eco-leather upholstered structural modesty panel (M + Cat. D) - Finishing frame: brushed aluminium (ZAL), black embossed painted (ZGNE), brushed bronze (ZBR)
 Bureau pieds panneaux en mélamine avec voile de fond structurelle revêtue en simili-cuir (M + Cat. D) - Cadre de finition: aluminium brossé (ZAL), verni gaufré noir (ZGNE), bronze brossé (ZBR)



L. W.	P. D.	H. H.	COD.	kg lb	m ³ ft ³
180 70 ⁷ / ₈	100 39 ³ / ₈	75 29 ¹ / ₂	ON0568	165,30 364.00	0,526 18.60
200 78 ³ / ₄	100 39 ³ / ₈	75 29 ¹ / ₂	ON0570	170,90 377.00	0,563 19.90
220 86 ⁵ / ₈	100 39 ³ / ₈	75 29 ¹ / ₂	ON0572	176,40 389.00	0,600 21.20
240 94 ¹ / ₂	100 39 ³ / ₈	75 29 ¹ / ₂	ON0574	187,00 412.00	0,638 22.50

Maggiorazioni - Supplement - Supplément			
Foratura per piano per 1 flap (non incluso) Drilling for top for 1 top access (not included) Perçage pour plateau pour 1 top access (pas inclus)	APP		
Foratura Ø 8 cm per piano Ø 3 ¹ / ₈ drilling for top Perçage Ø 8 cm pour plateau	APP		

APP = Posizione flap/tappo passacavi per scrivania
 Top access/Lid for cable outlet position for desk
 Position du top access/bouchon passe câbles pour bureau

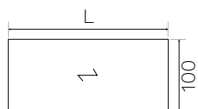
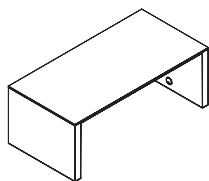


Albano

Scrivania pannellata in legno - Cornice di finitura: alluminio spazzolato (ZAL), verniciato goffrato nero (ZGNE), bronzo spazzolato (ZBR)

Veneer panelled desk - Finishing frame: brushed aluminium (ZAL), black embossed painted (ZGNE), brushed bronze (ZBR)

Bureau pieds panneaux en bois - Cadre de finition: aluminium brossé (ZAL), verni gaufré noir (ZGNE), bronze brossé (ZBR)



L. W.	P. D.	H. H.	COD.	kg lb	m ³ ft ³
180 70 ⁷ / ₈	100 39 ³ / ₈	75 29 ¹ / ₂	ON0568	165,40 365.00	0,526 18.60
200 78 ³ / ₄	100 39 ³ / ₈	75 29 ¹ / ₂	ON0570	171,00 377.00	0,564 19.90
220 86 ⁵ / ₈	100 39 ³ / ₈	75 29 ¹ / ₂	ON0572	176,50 389.00	0,601 21.20
240 94 ¹ / ₂	100 39 ³ / ₈	75 29 ¹ / ₂	ON0574	187,10 412.00	0,638 22.50

Maggiorazioni - Supplement - Supplément

Foratura per piano per 1 flap (non incluso)

Drilling for top for 1 top access (not included)

Perçage pour plateau pour 1 top access (pas inclus)

APP

Foratura Ø 8 cm per piano

Ø 3¹/₈ drilling for top

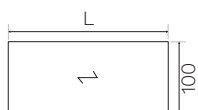
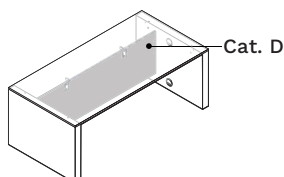
Perçage Ø 8 cm pour plateau

APP

Scrivania pannellata in legno con gonna strutturale rivestita in ecopelle (W + Cat. D) - Cornice di finitura: alluminio spazzolato (ZAL), verniciato goffrato nero (ZGNE), bronzo spazzolato (ZBR)

Veneer panelled desk with eco-leather upholstered structural modesty panel (W + Cat. D) - Finishing frame: brushed aluminium (ZAL), black embossed painted (ZGNE), brushed bronze (ZBR)

Bureau pieds panneaux en bois avec voile de fond structurelle revêtue en simili-cuir (W + Cat. D) - Cadre de finition: aluminium brossé (ZAL), verni gaufré noir (ZGNE), bronze brossé (ZBR)



L. W.	P. D.	H. H.	COD.	kg lb	m ³ ft ³
180 70 ⁷ / ₈	100 39 ³ / ₈	75 29 ¹ / ₂	ON0568	165,30 364.00	0,526 18.60
200 78 ³ / ₄	100 39 ³ / ₈	75 29 ¹ / ₂	ON0570	170,90 377.00	0,563 19.90
220 86 ⁵ / ₈	100 39 ³ / ₈	75 29 ¹ / ₂	ON0572	176,40 389.00	0,600 21.20
240 94 ¹ / ₂	100 39 ³ / ₈	75 29 ¹ / ₂	ON0574	187,00 412.00	0,638 22.50

Maggiorazioni - Supplement - Supplément

Foratura per piano per 1 flap (non incluso)

Drilling for top for 1 top access (not included)

Perçage pour plateau pour 1 top access (pas inclus)

APP

Foratura Ø 8 cm per piano

Ø 3¹/₈ drilling for top

Perçage Ø 8 cm pour plateau

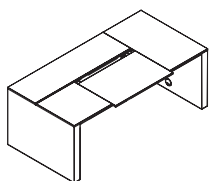
APP

Albano

Scrivania pannellata e sliding-top in melaminico - Cornice di finitura: alluminio spazzolato (ZAL), verniciato goffrato nero (ZGNE), bronzo spazzolato (ZBR) - Vasca cablaggio inclusa

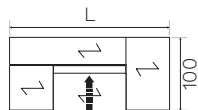
Melamine panelled desk and sliding-top - Finishing frame: brushed aluminium (ZAL), black embossed painted (ZGNE), brushed bronze (ZBR) - Cable tray included

Bureau pieds panneaux et sliding-top en mélamine - Cadre de finition: aluminium brossé (ZAL), verni gaufré noir (ZGNE), bronze brossé (ZBR) - Goulotte câblage inclus



Dx

Rh

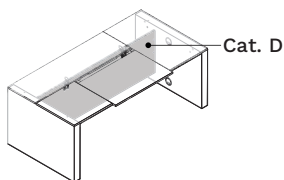


	L. W.	P. D.	H. H.	COD.		kg lb	m ³ ft ³
Dx Rh	180 70 ⁷ / ₈	100 39 ³ / ₈	75 29 ¹ / ₂	ON2568D		167,80 370.00	0,547 19.30
	200 78 ³ / ₄	100 39 ³ / ₈	75 29 ¹ / ₂	ON2570D		173,90 383.00	0,591 20.90
	220 86 ⁵ / ₈	100 39 ³ / ₈	75 29 ¹ / ₂	ON2572D		179,90 397.00	0,635 22.40
	240 94 ¹ / ₂	100 39 ³ / ₈	75 29 ¹ / ₂	ON2574D		190,90 421.00	0,678 24.00
Sx Lh	180 70 ⁷ / ₈	100 39 ³ / ₈	75 29 ¹ / ₂	ON2568S		167,80 370.00	0,547 19.30
	200 78 ³ / ₄	100 39 ³ / ₈	75 29 ¹ / ₂	ON2570S		173,90 383.00	0,591 20.90
	220 86 ⁵ / ₈	100 39 ³ / ₈	75 29 ¹ / ₂	ON2572S		179,90 397.00	0,635 22.40
	240 94 ¹ / ₂	100 39 ³ / ₈	75 29 ¹ / ₂	ON2574S		190,90 421.00	0,678 24.00

Scrivania pannellata e sliding-top in melaminico, gonna strutturale rivestita in ecopelle (M + Cat. D) - Cornice di finitura: alluminio spazzolato (ZAL), verniciato goffrato nero (ZGNE), bronzo spazzolato (ZBR) - Vasca cablaggio inclusa

Melamine panelled desk and sliding-top, eco-leather upholstered structural modesty panel (M + Cat. D) - Finishing frame: brushed aluminium (ZAL), black embossed painted (ZGNE), brushed bronze (ZBR) - Cable tray included

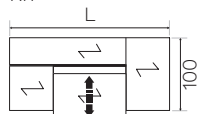
Bureau pieds panneaux et sliding-top en mélamine, voile de fond structurelle revêtue en simili-cuir (M + Cat. D) - Cadre de finition: aluminium brossé (ZAL), verni gaufré noir (ZGNE), bronze brossé (ZBR) - Goulotte câblage inclus



Cat. D

Dx

Rh

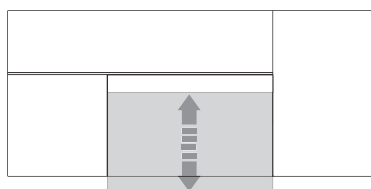


	L. W.	P. D.	H. H.	COD.		kg lb	m ³ ft ³
Dx Rh	180 70 ⁷ / ₈	100 39 ³ / ₈	75 29 ¹ / ₂	ON2568D		167,70 370.00	0,547 19.30
	200 78 ³ / ₄	100 39 ³ / ₈	75 29 ¹ / ₂	ON2570D		173,80 383.00	0,590 20.90
	220 86 ⁵ / ₈	100 39 ³ / ₈	75 29 ¹ / ₂	ON2572D		179,80 396.00	0,634 22.40
	240 94 ¹ / ₂	100 39 ³ / ₈	75 29 ¹ / ₂	ON2574D		190,80 421.00	0,678 23.90
Sx Lh	180 70 ⁷ / ₈	100 39 ³ / ₈	75 29 ¹ / ₂	ON2568S		167,70 370.00	0,547 19.30
	200 78 ³ / ₄	100 39 ³ / ₈	75 29 ¹ / ₂	ON2570S		173,80 383.00	0,590 20.90
	220 86 ⁵ / ₈	100 39 ³ / ₈	75 29 ¹ / ₂	ON2572S		179,80 396.00	0,634 22.40
	240 94 ¹ / ₂	100 39 ³ / ₈	75 29 ¹ / ₂	ON2574S		190,80 421.00	0,678 23.90

Sliding top = Piano con formella centrale scorrevole - Apertura formella 13 cm

Sliding top = Top with sliding central tile - 5¹/₈ opening tile

Sliding top = Plateau avec section central coulissant - Overture section 13 cm

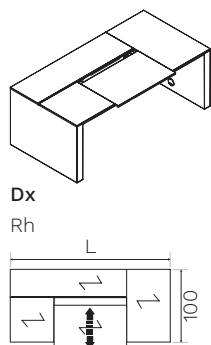


Albano

Scrivania pannellata e sliding-top in legno - Cornice di finitura: alluminio spazzolato (ZAL), verniciato goffrato nero (ZGNE), bronzo spazzolato (ZBR) - Vasca cablaggio inclusa

Veneer panelled desk and sliding-top - Finishing frame: brushed aluminium (ZAL), black embossed painted (ZGNE), brushed bronze (ZBR) - Cable tray included

Bureau pieds panneaux et sliding-top en bois - Cadre de finition: aluminium brossé (ZAL), verni gaufré noir (ZGNE), bronze brossé (ZBR) - Goulotte câblage inclus

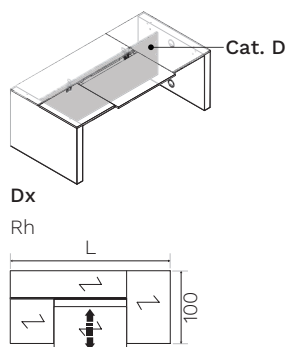


	L. W.	P. D.	H. H.	COD.		kg lb	m ³ ft ³
Dx Rh	180 70 ⁷ / ₈	100 39 ³ / ₈	75 29 ¹ / ₂	ON2568D		167,80 370.00	0,547 19.30
	200 78 ³ / ₄	100 39 ³ / ₈	75 29 ¹ / ₂	ON2570D		173,90 383.00	0,591 20.90
	220 86 ⁵ / ₈	100 39 ³ / ₈	75 29 ¹ / ₂	ON2572D		179,90 397.00	0,635 22.40
	240 94 ¹ / ₂	100 39 ³ / ₈	75 29 ¹ / ₂	ON2574D		190,90 421.00	0,678 24.00
Sx Lh	180 70 ⁷ / ₈	100 39 ³ / ₈	75 29 ¹ / ₂	ON2568S		167,80 370.00	0,547 19.30
	200 78 ³ / ₄	100 39 ³ / ₈	75 29 ¹ / ₂	ON2570S		173,90 383.00	0,591 20.90
	220 86 ⁵ / ₈	100 39 ³ / ₈	75 29 ¹ / ₂	ON2572S		179,90 397.00	0,635 22.40
	240 94 ¹ / ₂	100 39 ³ / ₈	75 29 ¹ / ₂	ON2574S		190,90 421.00	0,678 24.00

Scrivania pannellata e sliding-top in legno, gonna strutturale rivestita in ecopelle (W + Cat. D) - Cornice di finitura: alluminio spazzolato (ZAL), verniciato goffrato nero (ZGNE), bronzo spazzolato (ZBR) - Vasca cablaggio inclusa

Veneer panelled desk and sliding-top, eco-leather upholstered structural modesty panel (W + Cat. D) - Finishing frame: brushed aluminium (ZAL), black embossed painted (ZGNE), brushed bronze (ZBR) - Cable tray included

Bureau pieds panneaux et sliding-top en bois, voile de fond structurelle revêtue en simili-cuir (W + Cat. D) - Cadre de finition: aluminium brossé (ZAL), verni gaufré noir (ZGNE), bronze brossé (ZBR) - Goulotte câblage inclus



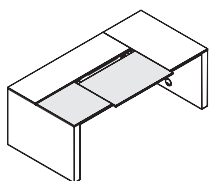
	L. W.	P. D.	H. H.	COD.		kg lb	m ³ ft ³
Dx Rh	180 70 ⁷ / ₈	100 39 ³ / ₈	75 29 ¹ / ₂	ON2568D		167,70 370.00	0,547 19.30
	200 78 ³ / ₄	100 39 ³ / ₈	75 29 ¹ / ₂	ON2570D		173,80 383.00	0,590 20.90
	220 86 ⁵ / ₈	100 39 ³ / ₈	75 29 ¹ / ₂	ON2572D		179,80 396.00	0,634 22.40
	240 94 ¹ / ₂	100 39 ³ / ₈	75 29 ¹ / ₂	ON2574D		190,80 421.00	0,678 23.90
Sx Lh	180 70 ⁷ / ₈	100 39 ³ / ₈	75 29 ¹ / ₂	ON2568S		167,70 370.00	0,547 19.30
	200 78 ³ / ₄	100 39 ³ / ₈	75 29 ¹ / ₂	ON2570S		173,80 383.00	0,590 20.90
	220 86 ⁵ / ₈	100 39 ³ / ₈	75 29 ¹ / ₂	ON2572S		179,80 396.00	0,634 22.40
	240 94 ¹ / ₂	100 39 ³ / ₈	75 29 ¹ / ₂	ON2574S		190,80 421.00	0,678 23.90

Albano

Scrivania pannellata in melaminico - Sliding-toprivestito in ecopelle - Cornice di finitura: alluminio spazzolato (ZAL), verniciato goffrato nero (ZGNE), bronzo spazzolato (ZBR) - Vasca cablaggio inclusa

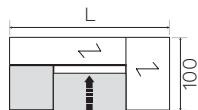
Melamine panelled desk - Eco-leather upholstered sliding-top - Finishing frame: brushed aluminium (ZAL), black embossed painted (ZGNE), brushed bronze (ZBR) - Cable tray included

Bureau pieds panneaux en mélamine - Sliding-top revêtu en simili-cuir - Cadre de finition: aluminium brossé (ZAL), verni gaufré noir (ZGNE), bronze brossé (ZBR) - Goulotte câblage inclus



Dx

Rh

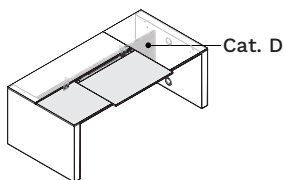


	L. W.	P. D.	H. H.	COD.		kg lb	m ³ ft ³
Dx Rh	180 70 ⁷ / ₈	100 39 ³ / ₈	75 29 ¹ / ₂	ON2568DP		169,80 374.00	0,547 19.30
	200 78 ³ / ₄	100 39 ³ / ₈	75 29 ¹ / ₂	ON2570DP		175,90 388.00	0,591 20.90
	220 86 ⁵ / ₈	100 39 ³ / ₈	75 29 ¹ / ₂	ON2572DP		182,90 403.00	0,635 22.40
	240 94 ¹ / ₂	100 39 ³ / ₈	75 29 ¹ / ₂	ON2574DP		193,90 427.00	0,678 24.00
Sx Lh	180 70 ⁷ / ₈	100 39 ³ / ₈	75 29 ¹ / ₂	ON2568SP		169,80 374.00	0,547 19.30
	200 78 ³ / ₄	100 39 ³ / ₈	75 29 ¹ / ₂	ON2570SP		175,90 388.00	0,591 20.90
	220 86 ⁵ / ₈	100 39 ³ / ₈	75 29 ¹ / ₂	ON2572SP		182,90 403.00	0,635 22.40
	240 94 ¹ / ₂	100 39 ³ / ₈	75 29 ¹ / ₂	ON2574SP		193,90 427.00	0,678 24.00

Scrivania pannellata in melaminico, gonna strutturale rivestita in ecopelle (M + Cat. D) - Sliding-top rivestito in ecopelle - Cornice di finitura: alluminio spazzolato (ZAL), verniciato goffrato nero (ZGNE), bronzo spazzolato (ZBR) - Vasca cablaggio inclusa

Melamine panelled desk, eco-leather upholstered structural modesty panel (M + Cat. D) - Eco-leather upholstered sliding-top - Finishing frame: brushed aluminium (ZAL), black embossed painted (ZGNE), brushed bronze (ZBR) - Cable tray included

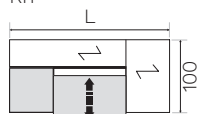
Bureau pieds panneaux en mélamine, voile de fond structurelle revêtu en simili-cuir (M + Cat. D) - Sliding-top revêtu en simili-cuir - Cadre de finition: aluminium brossé (ZAL), verni gaufré noir (ZGNE), bronze brossé (ZBR) - Goulotte câblage inclus



Cat. D

Dx

Rh

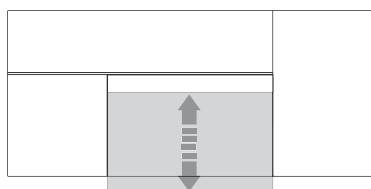


	L. W.	P. D.	H. H.	COD.		kg lb	m ³ ft ³
Dx Rh	180 70 ⁷ / ₈	100 39 ³ / ₈	75 29 ¹ / ₂	ON2568DP		169,70 374.00	0,547 19.30
	200 78 ³ / ₄	100 39 ³ / ₈	75 29 ¹ / ₂	ON2570DP		175,80 388.00	0,590 20.90
	220 86 ⁵ / ₈	100 39 ³ / ₈	75 29 ¹ / ₂	ON2572DP		182,80 403.00	0,634 22.40
	240 94 ¹ / ₂	100 39 ³ / ₈	75 29 ¹ / ₂	ON2574DP		193,80 427.00	0,678 23.90
Sx Lh	180 70 ⁷ / ₈	100 39 ³ / ₈	75 29 ¹ / ₂	ON2568SP		169,70 374.00	0,547 19.30
	200 78 ³ / ₄	100 39 ³ / ₈	75 29 ¹ / ₂	ON2570SP		175,80 388.00	0,590 20.90
	220 86 ⁵ / ₈	100 39 ³ / ₈	75 29 ¹ / ₂	ON2572SP		182,80 403.00	0,634 22.40
	240 94 ¹ / ₂	100 39 ³ / ₈	75 29 ¹ / ₂	ON2574SP		193,80 427.00	0,678 23.90

Sliding top = Piano con formella centrale scorrevole - Apertura formella 13 cm

Sliding top = Top with sliding central tile - 5¹/₈ opening tile

Sliding top = Plateau avec section central coulissant - Overture section 13 cm

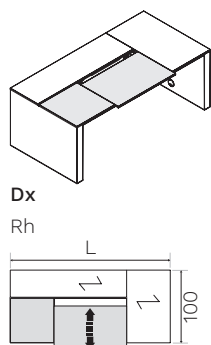


Albano

Scrivania pannellata in legno - Sliding-top rivestito in ecopelle - Cornice di finitura: alluminio spazzolato (ZAL), verniciato goffrato nero (ZGNE), bronzo spazzolato (ZBR) - Vasca cablaggio inclusa

Veneer panelled desk - Eco-leather covered mdf sliding-top - Finishing frame: brushed aluminium (ZAL), black embossed painted (ZGNE), brushed bronze (ZBR) - Cable tray included

Bureau pieds panneaux en bois - Sliding-top revêtu en simili-cuir - Cadre de finition: aluminium brossé (ZAL), verni gaufré noir (ZGNE), bronze brossé (ZBR) - Goulotte câblage inclus

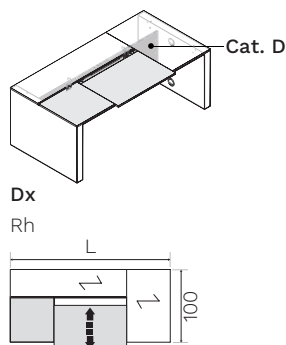


	L. W.	P. D.	H. H.	COD.		kg lb	m ³ ft ³
Dx Rh	180 70 ⁷ / ₈	100 39 ³ / ₈	75 29 ¹ / ₂	ON2568DP		169,80 374.00	0,547 19.30
	200 78 ³ / ₄	100 39 ³ / ₈	75 29 ¹ / ₂	ON2570DP		175,90 388.00	0,591 20.90
	220 86 ⁵ / ₈	100 39 ³ / ₈	75 29 ¹ / ₂	ON2572DP		182,90 403.00	0,635 22.40
	240 94 ¹ / ₂	100 39 ³ / ₈	75 29 ¹ / ₂	ON2574DP		193,90 427.00	0,678 24.00
Sx Lh	180 70 ⁷ / ₈	100 39 ³ / ₈	75 29 ¹ / ₂	ON2568SP		169,80 374.00	0,547 19.30
	200 78 ³ / ₄	100 39 ³ / ₈	75 29 ¹ / ₂	ON2570SP		175,90 388.00	0,591 20.90
	220 86 ⁵ / ₈	100 39 ³ / ₈	75 29 ¹ / ₂	ON2572SP		182,90 403.00	0,635 22.40
	240 94 ¹ / ₂	100 39 ³ / ₈	75 29 ¹ / ₂	ON2574SP		193,90 427.00	0,678 24.00

Scrivania pannellata in legno, gonna strutturale rivestita in ecopelle (W + Cat. D) - Sliding-top rivestito in ecopelle - Cornice di finitura: alluminio spazzolato (ZAL), verniciato goffrato nero (ZGNE), bronzo spazzolato (ZBR) - Vasca cablaggio inclusa

Veneer panelled desk, eco-leather upholstered structural modesty panel (W + Cat. D) - Eco-leather upholstered sliding-top - Finishing frame: brushed aluminium (ZAL), black embossed painted (ZGNE), brushed bronze (ZBR) - Cable tray included

Bureau pieds panneaux en bois, voile de fond structurale revêtue en simili-cuir (W + Cat. D) - Sliding-top revêtu en simili-cuir - Cadre de finition: aluminium brossé (ZAL), verni gaufré noir (ZGNE), bronze brossé (ZBR) - Goulotte câblage inclus



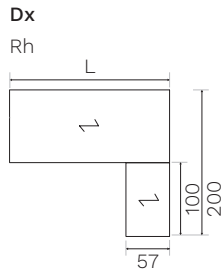
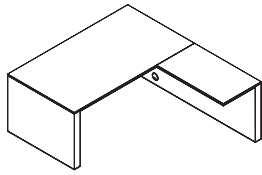
	L. W.	P. D.	H. H.	COD.		kg lb	m ³ ft ³
Dx Rh	180 70 ⁷ / ₈	100 39 ³ / ₈	75 29 ¹ / ₂	ON2568DP		169,70 374.00	0,547 19.30
	200 78 ³ / ₄	100 39 ³ / ₈	75 29 ¹ / ₂	ON2570DP		175,80 388.00	0,590 20.90
	220 86 ⁵ / ₈	100 39 ³ / ₈	75 29 ¹ / ₂	ON2572DP		182,80 403.00	0,634 22.40
	240 94 ¹ / ₂	100 39 ³ / ₈	75 29 ¹ / ₂	ON2574DP		193,80 427.00	0,678 23.90
Sx Lh	180 70 ⁷ / ₈	100 39 ³ / ₈	75 29 ¹ / ₂	ON2568SP		169,70 374.00	0,547 19.30
	200 78 ³ / ₄	100 39 ³ / ₈	75 29 ¹ / ₂	ON2570SP		175,80 388.00	0,590 20.90
	220 86 ⁵ / ₈	100 39 ³ / ₈	75 29 ¹ / ₂	ON2572SP		182,80 403.00	0,634 22.40
	240 94 ¹ / ₂	100 39 ³ / ₈	75 29 ¹ / ₂	ON2574SP		193,80 427.00	0,678 23.90

Albano

Scrivania pannellata con allungo in melaminico - Cornice di finitura: alluminio spazzolato (ZAL), verniciato goffrato nero (ZGNE), bronzo spazzolato (ZBR)

Melamine panelled desk with return top - Finishing frame: brushed aluminium (ZAL), black embossed painted (ZGNE), brushed bronze (ZBR)

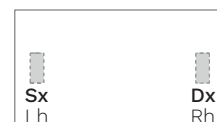
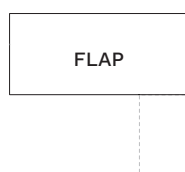
Bureau pieds panneaux avec retour en mélamine - Cadre de finition: aluminium brossé (ZAL), verni gaufré noir (ZGNE), bronze brossé (ZBR)



	L. W.	P. D.	H. H.	COD.		kg lb	m ³ ft ³
Dx Rh	180 70 ⁷ / ₈	200 78 ³ / ₄	75 29 ¹ / ₂	ON0768D		235,40 519.00	0,715 25.30
	200 78 ³ / ₄	200 78 ³ / ₄	75 29 ¹ / ₂	ON0770D		241,50 532.00	0,753 26.60
	220 86 ⁵ / ₈	200 78 ³ / ₄	75 29 ¹ / ₂	ON0772D		242,50 535.00	0,790 27.90
	240 94 ¹ / ₂	200 78 ³ / ₄	75 29 ¹ / ₂	ON0774D		255,10 562.00	0,827 29.20
Sx Lh	180 70 ⁷ / ₈	200 78 ³ / ₄	75 29 ¹ / ₂	ON0768S		235,40 519.00	0,715 25.30
	200 78 ³ / ₄	200 78 ³ / ₄	75 29 ¹ / ₂	ON0770S		241,50 532.00	0,753 26.60
	220 86 ⁵ / ₈	200 78 ³ / ₄	75 29 ¹ / ₂	ON0772S		242,50 535.00	0,790 27.90
	240 94 ¹ / ₂	200 78 ³ / ₄	75 29 ¹ / ₂	ON0774S		255,10 562.00	0,827 29.20

Maggiorazioni - Supplement - Supplément			
Foratura per piano per 1 flap (non incluso) Drilling for top for 1 top access (not included) Perçage pour plateau pour 1 top access (pas inclus)	APP		
Foratura Ø 8 cm per piano Ø 3 ¹ / ₈ drilling for top Perçage Ø 8 cm pour plateau	APP		

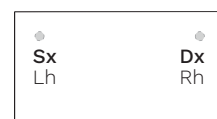
APP = Posizione flap/tappo passacavi per scrivania
Top access/Lid for cable outlet position for desk
Position du top access/bouchon passe câbles pour bureau



cod. EEFL01



metal



cod. CX9200R



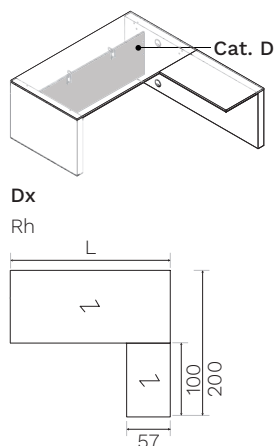
metal

Albano

Scrivania pannellata con allungo in melaminico, gonna strutturale rivestita in ecopelle (M + Cat. D) - Cornice di finitura in alluminio: spazzolato (ZAL), verniciato goffrato nero (ZGNE), verniciato bronzo (ZBR)

Melamine panelled desk with return top, eco-leather upholstered structural modesty panel (M + Cat. D) - Finishing frame: brushed aluminium (ZAL), black embossed painted (ZGNE), brushed bronze (ZBR)

Bureau pieds panneaux avec retour en mélamine, voile de fond structurelle revêtue en simili-cuir (M + Cat. D) - Cadre de finition: aluminium brossé (ZAL), verni gaufré noir (ZGNE), bronze brossé (ZBR)



	L. W.	P. D.	H. H.	COD.		kg lb	m ³ ft ³
Dx Rh	180 70 ⁷ / ₈	200 78 ³ / ₄	75 29 ¹ / ₂	ON0768D		235,30 519.00	0,715 25.20
	200 78 ³ / ₄	200 78 ³ / ₄	75 29 ¹ / ₂	ON0770D		241,40 532.00	0,752 26.60
	220 86 ⁵ / ₈	200 78 ³ / ₄	75 29 ¹ / ₂	ON0772D		242,40 534.00	0,789 27.90
	240 94 ¹ / ₂	200 78 ³ / ₄	75 29 ¹ / ₂	ON0774D		255,00 562.00	0,827 29.20
Sx Lh	180 70 ⁷ / ₈	200 78 ³ / ₄	75 29 ¹ / ₂	ON0768S		235,30 519.00	0,715 25.20
	200 78 ³ / ₄	200 78 ³ / ₄	75 29 ¹ / ₂	ON0770S		241,40 532.00	0,752 26.60
	220 86 ⁵ / ₈	200 78 ³ / ₄	75 29 ¹ / ₂	ON0772S		242,40 534.00	0,789 27.90
	240 94 ¹ / ₂	200 78 ³ / ₄	75 29 ¹ / ₂	ON0774S		255,00 562.00	0,827 29.20

Maggiorazioni - Supplement - Supplément

Foratura per piano per 1 flap (non incluso)

Drilling for top for 1 top access (not included)

Perçage pour plateau pour 1 top access (pas inclus)

APP

Foratura Ø 8 cm per piano

Ø 3¹/₈ drilling for top

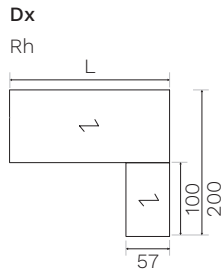
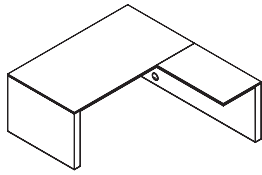
Perçage Ø 8 cm pour plateau

APP

Albano

Scrivania pannellata con allungo in legno - Cornice di finitura: alluminio spazzolato (ZAL), verniciato goffrato nero (ZGNE), bronzo spazzolato (ZBR)

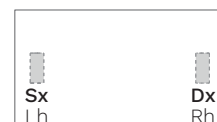
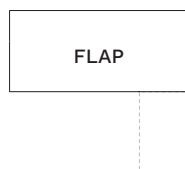
Veneer panelled desk with return top - Finishing frame: brushed aluminium (ZAL), black embossed painted (ZGNE), brushed bronze (ZBR)
Bureau pieds panneaux avec retour en bois - Cadre de finition: aluminium brossé (ZAL), verni gaufré noir (ZGNE), bronze brossé (ZBR)



	L. W.	P. D.	H. H.	COD.		kg lb	m ³ ft ³
Dx Rh	180 70 ⁷ / ₈	200 78 ³ / ₄	75 29 ¹ / ₂	ON0768D		235,40 519.00	0,715 25.30
	200 78 ³ / ₄	200 78 ³ / ₄	75 29 ¹ / ₂	ON0770D		241,50 532.00	0,753 26.60
	220 86 ⁵ / ₈	200 78 ³ / ₄	75 29 ¹ / ₂	ON0772D		242,50 535.00	0,790 27.90
	240 94 ¹ / ₂	200 78 ³ / ₄	75 29 ¹ / ₂	ON0774D		255,10 562.00	0,827 29.20
Sx Lh	180 70 ⁷ / ₈	200 78 ³ / ₄	75 29 ¹ / ₂	ON0768S		235,40 519.00	0,715 25.30
	200 78 ³ / ₄	200 78 ³ / ₄	75 29 ¹ / ₂	ON0770S		241,50 532.00	0,753 26.60
	220 86 ⁵ / ₈	200 78 ³ / ₄	75 29 ¹ / ₂	ON0772S		242,50 535.00	0,790 27.90
	240 94 ¹ / ₂	200 78 ³ / ₄	75 29 ¹ / ₂	ON0774S		255,10 562.00	0,827 29.20

Maggiorazioni - Supplement - Supplément			
Foratura per piano per 1 flap (non incluso) Drilling for top for 1 top access (not included) Perçage pour plateau pour 1 top access (pas inclus)	APP		
Foratura Ø 8 cm per piano Ø 3 ¹ / ₈ drilling for top Perçage Ø 8 cm pour plateau	APP		

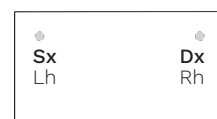
APP = Posizione flap/tappo passacavi per scrivania
Top access/Lid for cable outlet position for desk
Position du top access/bouchon passe câbles pour bureau



cod. EEFL01



metal



cod. CX9200R



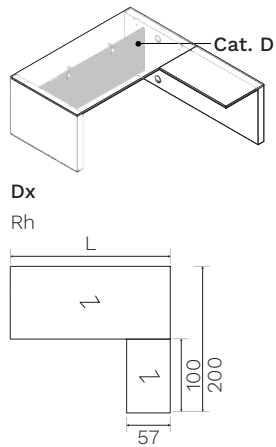
metal

Albano

Scrivania pannellata con allungo in legno, gonna strutturale rivestita in ecopelle (W + Cat. D) - Cornice di finitura: alluminio spazzolato (ZAL), verniciato goffrato nero (ZGNE), bronzo spazzolato (ZBR)

Veneer panelled desk with return top, eco-leather upholstered structural modesty panel (W + Cat. D) - Finishing frame: brushed aluminium (ZAL), black embossed painted (ZGNE), brushed bronze (ZBR)

Bureau pieds panneaux avec retour en bois, voile de fond structurelle revêtue en simili-cuir (W + Cat. D) - Cadre de finition: aluminium brossé (ZAL), verni gaufré noir (ZGNE), bronze brossé (ZBR)



	L. W.	P. D.	H. H.	COD.		kg lb	m ³ ft ³
Dx Rh	180 70 ⁷ / ₈	200 78 ³ / ₄	75 29 ¹ / ₂	ON0768D		235,30 519.00	0,715 25.20
	200 78 ³ / ₄	200 78 ³ / ₄	75 29 ¹ / ₂	ON0770D		241,40 532.00	0,752 26.60
	220 86 ⁵ / ₈	200 78 ³ / ₄	75 29 ¹ / ₂	ON0772D		242,40 534.00	0,789 27.90
	240 94 ¹ / ₂	200 78 ³ / ₄	75 29 ¹ / ₂	ON0774D		255,00 562.00	0,827 29.20
Sx Lh	180 70 ⁷ / ₈	200 78 ³ / ₄	75 29 ¹ / ₂	ON0768S		235,30 519.00	0,715 25.20
	200 78 ³ / ₄	200 78 ³ / ₄	75 29 ¹ / ₂	ON0770S		241,40 532.00	0,752 26.60
	220 86 ⁵ / ₈	200 78 ³ / ₄	75 29 ¹ / ₂	ON0772S		242,40 534.00	0,789 27.90
	240 94 ¹ / ₂	200 78 ³ / ₄	75 29 ¹ / ₂	ON0774S		255,00 562.00	0,827 29.20

Maggiorazioni - Supplement - Supplément

Foratura per piano per 1 flap (non incluso)

Drilling for top for 1 top access (not included)
Perçage pour plateau pour 1 top access (pas inclus)

APP

Foratura Ø 8 cm per piano

Ø 3¹/₈ drilling for top
Perçage Ø 8 cm pour plateau

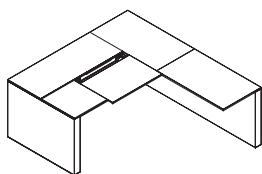
APP

Albano

Scrivania pannellata con allungo e sliding-top in melaminico - Cornice di finitura: alluminio spazzolato (ZAL), verniciato goffrato nero (ZGNE), bronzo spazzolato (ZBR) - Vasca cablaggio inclusa

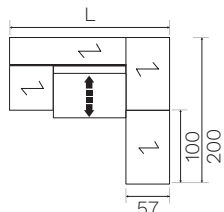
Melamine panelled desk with return top and sliding-top - Finishing frame: brushed aluminium (ZAL), black embossed painted (ZGNE), brushed bronze (ZBR) - Cable tray included

Bureau pieds panneaux avec retour et sliding-top en mélamine - Cadre de finition: aluminium brossé (ZAL), verni gaufré noir (ZGNE), bronze brossé (ZBR) - Goulotte câblage inclus



Dx

Rh

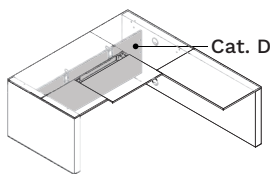


	L. W.	P. D.	H. H.	COD.		kg lb	m ³ ft ³
Dx Rh	180 70 ⁷ / ₈	200 78 ³ / ₄	75 29 ¹ / ₂	ON2768D		232,80 513.00	0,736 26.00
	200 78 ³ / ₄	200 78 ³ / ₄	75 29 ¹ / ₂	ON2770D		238,90 527.00	0,780 27.50
	220 86 ⁵ / ₈	200 78 ³ / ₄	75 29 ¹ / ₂	ON2772D		245,90 542.00	0,824 29.10
	240 94 ¹ / ₂	200 78 ³ / ₄	75 29 ¹ / ₂	ON2774D		256,90 566.00	0,868 30.60
Sx Lh	180 70 ⁷ / ₈	200 78 ³ / ₄	75 29 ¹ / ₂	ON2768S		232,80 513.00	0,736 26.00
	200 78 ³ / ₄	200 78 ³ / ₄	75 29 ¹ / ₂	ON2770S		238,90 527.00	0,780 27.50
	220 86 ⁵ / ₈	200 78 ³ / ₄	75 29 ¹ / ₂	ON2772S		245,90 542.00	0,824 29.10
	240 94 ¹ / ₂	200 78 ³ / ₄	75 29 ¹ / ₂	ON2774S		256,90 566.00	0,868 30.60

Scrivania pannellata con allungo e sliding-top in melaminico - Gonna strutturale rivestita in ecopelle (M + Cat. D) - Cornice di finitura: alluminio spazzolato (ZAL), verniciato goffrato nero (ZGNE), bronzo spazzolato (ZBR) - Vasca cablaggio inclusa

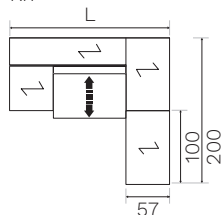
Melamine panelled desk with return top and sliding-top - Eco-leather upholstered structural modesty panel (M + Cat. D) - Finishing frame: brushed aluminium (ZAL), black embossed painted (ZGNE), brushed bronze (ZBR) - Cable tray included

Bureau pieds panneaux avec retour et sliding-top en mélamine - Voile de fond structurelle revêtue en simili-cuir (M + Cat. D) - Cadre de finition: aluminium brossé (ZAL), verni gaufré noir (ZGNE), bronze brossé (ZBR) - Goulotte câblage inclus



Dx

Rh

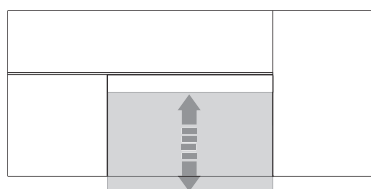


	L. W.	P. D.	H. H.	COD.		kg lb	m ³ ft ³
Dx Rh	180 70 ⁷ / ₈	200 78 ³ / ₄	75 29 ¹ / ₂	ON2768D		232,70 513.00	0,736 26.00
	200 78 ³ / ₄	200 78 ³ / ₄	75 29 ¹ / ₂	ON2770D		238,80 526.00	0,780 27.50
	220 86 ⁵ / ₈	200 78 ³ / ₄	75 29 ¹ / ₂	ON2772D		245,80 542.00	0,823 29.10
	240 94 ¹ / ₂	200 78 ³ / ₄	75 29 ¹ / ₂	ON2774D		256,80 566.00	0,867 30.60
Sx Lh	180 70 ⁷ / ₈	200 78 ³ / ₄	75 29 ¹ / ₂	ON2768S		232,70 513.00	0,736 26.00
	200 78 ³ / ₄	200 78 ³ / ₄	75 29 ¹ / ₂	ON2770S		238,80 526.00	0,780 27.50
	220 86 ⁵ / ₈	200 78 ³ / ₄	75 29 ¹ / ₂	ON2772S		245,80 542.00	0,823 29.10
	240 94 ¹ / ₂	200 78 ³ / ₄	75 29 ¹ / ₂	ON2774S		256,80 566.00	0,867 30.60

Sliding top = Piano con formella centrale scorrevole - Apertura formella 13 cm

Sliding top = Top with sliding central tile - 5¹/₈ opening tile

Sliding top = Plateau avec section central coulissant - Overture section 13 cm

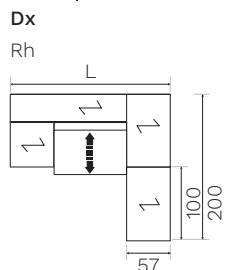
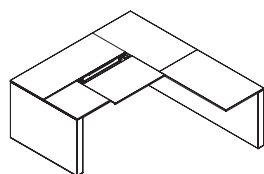


Albano

Scrivania pannellata con allungo e sliding-top in legno - Cornice di finitura: alluminio spazzolato (ZAL), verniciato goffrato nero (ZGNE), bronzo spazzolato (ZBR) - Vasca cablaggio inclusa

Veneer panelled desk with return top and sliding-top - Finishing frame: brushed aluminium (ZAL), black embossed painted (ZGNE), brushed bronze (ZBR) - Cable tray included

Bureau pieds panneaux avec retour et sliding-top en bois - Cadre de finition: aluminium brossé (ZAL), verni gaufré noir (ZGNE), bronze brossé (ZBR) - Goulotte câblage inclus

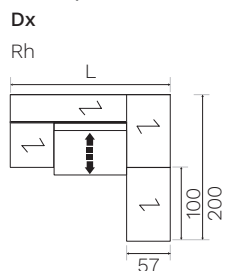
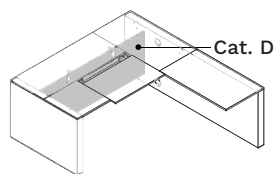


	L. W.	P. D.	H. H.	COD.		kg lb	m ³ ft ³
Dx Rh	180 70 ⁷ / ₈	200 78 ³ / ₄	75 29 ¹ / ₂	ON2768D		232,80 513.00	0,736 26.00
	200 78 ³ / ₄	200 78 ³ / ₄	75 29 ¹ / ₂	ON2770D		238,90 527.00	0,780 27.50
	220 86 ⁵ / ₈	200 78 ³ / ₄	75 29 ¹ / ₂	ON2772D		245,90 542.00	0,824 29.10
	240 94 ¹ / ₂	200 78 ³ / ₄	75 29 ¹ / ₂	ON2774D		256,90 566.00	0,868 30.60
Sx Lh	180 70 ⁷ / ₈	200 78 ³ / ₄	75 29 ¹ / ₂	ON2768S		232,80 513.00	0,736 26.00
	200 78 ³ / ₄	200 78 ³ / ₄	75 29 ¹ / ₂	ON2770S		238,90 527.00	0,780 27.50
	220 86 ⁵ / ₈	200 78 ³ / ₄	75 29 ¹ / ₂	ON2772S		245,90 542.00	0,824 29.10
	240 94 ¹ / ₂	200 78 ³ / ₄	75 29 ¹ / ₂	ON2774S		256,90 566.00	0,868 30.60

Scrivania pannellata con allungo e sliding-top in legno - Gonna strutturale rivestita in ecopelle (W + Cat. D) - Cornice di finitura: alluminio spazzolato (ZAL), verniciato goffrato nero (ZGNE), bronzo spazzolato (ZBR) - Vasca cablaggio inclusa

Veneer panelled desk with return top and sliding-top - Eco-leather upholstered structural modesty panel (W + Cat. D) - Finishing frame: brushed aluminium (ZAL), black embossed painted (ZGNE), brushed bronze (ZBR) - Cable tray included

Bureau pieds panneaux avec retour et sliding-top en bois - Voile de fond structurale revêtue en simili-cuir (W + Cat. D) - Cadre de finition: aluminium brossé (ZAL), verni gaufré noir (ZGNE), bronze brossé (ZBR) - Goulotte câblage inclus



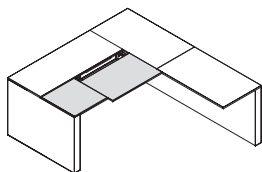
	L. W.	P. D.	H. H.	COD.		kg lb	m ³ ft ³
Dx Rh	180 70 ⁷ / ₈	200 78 ³ / ₄	75 29 ¹ / ₂	ON2768D		232,70 513.00	0,736 26.00
	200 78 ³ / ₄	200 78 ³ / ₄	75 29 ¹ / ₂	ON2770D		238,80 526.00	0,780 27.50
	220 86 ⁵ / ₈	200 78 ³ / ₄	75 29 ¹ / ₂	ON2772D		245,80 542.00	0,823 29.10
	240 94 ¹ / ₂	200 78 ³ / ₄	75 29 ¹ / ₂	ON2774D		256,80 566.00	0,867 30.60
Sx Lh	180 70 ⁷ / ₈	200 78 ³ / ₄	75 29 ¹ / ₂	ON2768S		232,70 513.00	0,736 26.00
	200 78 ³ / ₄	200 78 ³ / ₄	75 29 ¹ / ₂	ON2770S		238,80 526.00	0,780 27.50
	220 86 ⁵ / ₈	200 78 ³ / ₄	75 29 ¹ / ₂	ON2772S		245,80 542.00	0,823 29.10
	240 94 ¹ / ₂	200 78 ³ / ₄	75 29 ¹ / ₂	ON2774S		256,80 566.00	0,867 30.60

Albano

Scrivania pannellata con allungo in melaminico - Sliding-top rivestito in ecopelle - Cornice di finitura: alluminio spazzolato (ZAL), verniciato goffrato nero (ZGNE), bronzo spazzolato (ZBR) - Vasca cablaggio inclusa

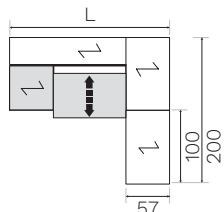
Melamine panelled desk with return top - Eco-leather upholstered sliding-top - Finishing frame: brushed aluminium (ZAL), black embossed painted (ZGNE), brushed bronze (ZBR) - Cable tray included

Bureau pieds panneaux avec retour en mélamine - Sliding-top en mdf revêtu en simili-cuir - Cadre de finition: aluminium brossé (ZAL), verni gaufré noir (ZGNE), bronze brossé (ZBR) - Goulotte câblage inclus



Dx

Rh

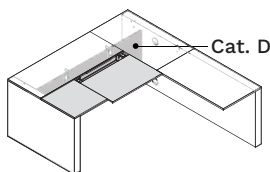


	L. W.	P. D.	H. H.	COD.		kg lb	m ³ ft ³
Dx Rh	180 70 ⁷ / ₈	200 78 ³ / ₄	75 29 ¹ / ₂	ON2768DP		234,80 518.00	0,736 26.00
	200 78 ³ / ₄	200 78 ³ / ₄	75 29 ¹ / ₂	ON2770DP		240,90 531.00	0,780 27.50
	220 86 ⁵ / ₈	200 78 ³ / ₄	75 29 ¹ / ₂	ON2772DP		247,90 547.00	0,824 29.10
	240 94 ¹ / ₂	200 78 ³ / ₄	75 29 ¹ / ₂	ON2774DP		258,90 571.00	0,868 30.60
Sx Lh	180 70 ⁷ / ₈	200 78 ³ / ₄	75 29 ¹ / ₂	ON2768SP		234,80 518.00	0,736 26.00
	200 78 ³ / ₄	200 78 ³ / ₄	75 29 ¹ / ₂	ON2770SP		240,90 531.00	0,780 27.50
	220 86 ⁵ / ₈	200 78 ³ / ₄	75 29 ¹ / ₂	ON2772SP		247,90 547.00	0,824 29.10
	240 94 ¹ / ₂	200 78 ³ / ₄	75 29 ¹ / ₂	ON2774SP		258,90 571.00	0,868 30.60

Scrivania pannellata con allungo in melaminico - Gonna strutturale rivestita in ecopelle (M + Cat. D) - Sliding-top rivestito in ecopelle - Cornice di finitura: alluminio spazzolato (ZAL), verniciato goffrato nero (ZGNE), bronzo spazzolato (ZBR) - Vasca cablaggio inclusa

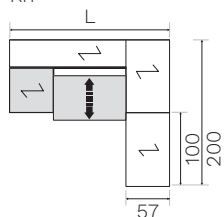
Melamine panelled desk with return top - Eco-leather upholstered structural modesty panel (M + Cat. D) - Eco-leather upholstered sliding-top - Finishing frame: brushed aluminium (ZAL), black embossed painted (ZGNE), brushed bronze (ZBR) - Cable tray included

Bureau pieds panneaux avec retour en mélamine - Voile de fond structurelle revêtu en simili-cuir (M + Cat. D) - Sliding-top revêtu en simili-cuir - Cadre de finition: aluminium brossé (ZAL), verni gaufré noir (ZGNE), bronze brossé (ZBR) - Goulotte câblage inclus



Dx

Rh

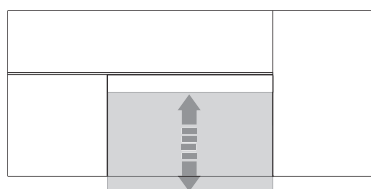


	L. W.	P. D.	H. H.	COD.		kg lb	m ³ ft ³
Dx Rh	180 70 ⁷ / ₈	200 78 ³ / ₄	75 29 ¹ / ₂	ON2768DP		234,70 517.00	0,736 26.00
	200 78 ³ / ₄	200 78 ³ / ₄	75 29 ¹ / ₂	ON2770DP		240,80 531.00	0,780 27.50
	220 86 ⁵ / ₈	200 78 ³ / ₄	75 29 ¹ / ₂	ON2772DP		247,80 546.00	0,823 29.10
	240 94 ¹ / ₂	200 78 ³ / ₄	75 29 ¹ / ₂	ON2774DP		258,80 571.00	0,867 30.60
Sx Lh	180 70 ⁷ / ₈	200 78 ³ / ₄	75 29 ¹ / ₂	ON2768SP		234,70 517.00	0,736 26.00
	200 78 ³ / ₄	200 78 ³ / ₄	75 29 ¹ / ₂	ON2770SP		240,80 531.00	0,780 27.50
	220 86 ⁵ / ₈	200 78 ³ / ₄	75 29 ¹ / ₂	ON2772SP		247,80 546.00	0,823 29.10
	240 94 ¹ / ₂	200 78 ³ / ₄	75 29 ¹ / ₂	ON2774SP		258,80 571.00	0,867 30.60

Sliding top = Piano con formella centrale scorrevole - Apertura formella 13 cm

Sliding top = Top with sliding central tile - 5¹/₈ opening tile

Sliding top = Plateau avec section central coulissant - Overture section 13 cm

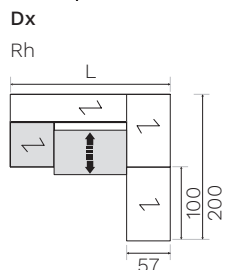
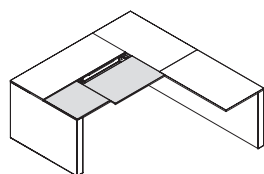


Albano

Scrivania pannellata con allungo in legno - Sliding-top rivestito in ecopelle - Cornice di finitura: alluminio spazzolato (ZAL), verniciato goffrato nero (ZGNE), bronzo spazzolato (ZBR) - Vasca cablaggio inclusa

Veneer panelled desk with return top - Eco-leather upholstered sliding-top - Finishing frame: brushed aluminium (ZAL), black embossed painted (ZGNE), brushed bronze (ZBR) - Cable tray included

Bureau pieds panneaux avec retour en bois - Sliding-top revêtu en simili-cuir - Cadre de finition: aluminium brossé (ZAL), verni gaufré noir (ZGNE), bronze brossé (ZBR) - Goulotte câblage inclus

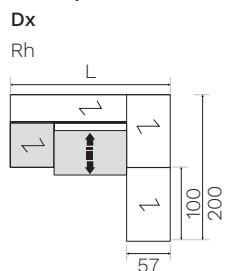
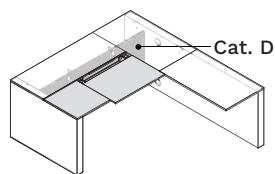


	L. W.	P. D.	H. H.	COD.		kg lb	m ³ ft ³
Dx Rh	180 70 ⁷ / ₈	200 78 ³ / ₄	75 29 ¹ / ₂	ON2768DP		234,80 518.00	0,736 26.00
	200 78 ³ / ₄	200 78 ³ / ₄	75 29 ¹ / ₂	ON2770DP		240,90 531.00	0,780 27.50
	220 86 ⁵ / ₈	200 78 ³ / ₄	75 29 ¹ / ₂	ON2772DP		247,90 547.00	0,824 29.10
	240 94 ¹ / ₂	200 78 ³ / ₄	75 29 ¹ / ₂	ON2774DP		258,90 571.00	0,868 30.60
Sx Lh	180 70 ⁷ / ₈	200 78 ³ / ₄	75 29 ¹ / ₂	ON2768SP		234,80 518.00	0,736 26.00
	200 78 ³ / ₄	200 78 ³ / ₄	75 29 ¹ / ₂	ON2770SP		240,90 531.00	0,780 27.50
	220 86 ⁵ / ₈	200 78 ³ / ₄	75 29 ¹ / ₂	ON2772SP		247,90 547.00	0,824 29.10
	240 94 ¹ / ₂	200 78 ³ / ₄	75 29 ¹ / ₂	ON2774SP		258,90 571.00	0,868 30.60

Scrivania pannellata con allungo in legno - Gonna strutturale rivestita in ecopelle (W + Cat. D) - Sliding-top rivestito in ecopelle - Cornice di finitura: alluminio spazzolato (ZAL), verniciato goffrato nero (ZGNE), bronzo spazzolato (ZBR) - Vasca cablaggio inclusa

Veneer panelled desk with return top - Eco-leather upholstered structural modesty panel (W + Cat. D) - Eco-leather upholstered sliding-top - Finishing frame: brushed aluminium (ZAL), black embossed painted (ZGNE), brushed bronze (ZBR) - Cable tray included

Bureau pieds panneaux avec retour en bois - Voile de fond structurelle revêtue en simili-cuir (W + Cat. D) - Sliding-top revêtu en simili-cuir - Cadre de finition: aluminium brossé (ZAL), verni gaufré noir (ZGNE), bronze brossé (ZBR) - Goulotte câblage inclus



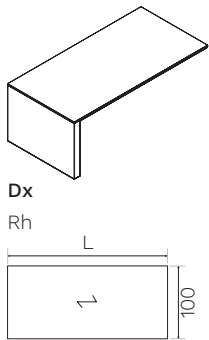
	L. W.	P. D.	H. H.	COD.		kg lb	m ³ ft ³
Dx Rh	180 70 ⁷ / ₈	200 78 ³ / ₄	75 29 ¹ / ₂	ON2768DP		234,70 517.00	0,736 26.00
	200 78 ³ / ₄	200 78 ³ / ₄	75 29 ¹ / ₂	ON2770DP		240,80 531.00	0,780 27.50
	220 86 ⁵ / ₈	200 78 ³ / ₄	75 29 ¹ / ₂	ON2772DP		247,80 546.00	0,823 29.10
	240 94 ¹ / ₂	200 78 ³ / ₄	75 29 ¹ / ₂	ON2774DP		258,80 571.00	0,867 30.60
Sx Lh	180 70 ⁷ / ₈	200 78 ³ / ₄	75 29 ¹ / ₂	ON2768SP		234,70 517.00	0,736 26.00
	200 78 ³ / ₄	200 78 ³ / ₄	75 29 ¹ / ₂	ON2770SP		240,80 531.00	0,780 27.50
	220 86 ⁵ / ₈	200 78 ³ / ₄	75 29 ¹ / ₂	ON2772SP		247,80 546.00	0,823 29.10
	240 94 ¹ / ₂	200 78 ³ / ₄	75 29 ¹ / ₂	ON2774SP		258,80 571.00	0,867 30.60

Albano

Scrivania pannellata appesa in melaminico - Cornice di finitura: alluminio spazzolato (ZAL), verniciato goffrato nero (ZGNE), bronzo spazzolato (ZBR)

Melamine hanging panelled desk - Finishing frame: brushed aluminium (ZAL), black embossed painted (ZGNE), brushed bronze (ZBR)

Bureau pieds panneaux suspendu en mélamine - Cadre de finition: aluminium brossé (ZAL), verni gaufré noir (ZGNE), bronze brossé (ZBR)



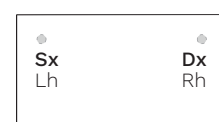
	L. W.	P. D.	H. H.	COD.		kg lb	m ³ ft ³
Dx Rh	180 70 ⁷ / ₈	100 39 ³ / ₈	75 29 ¹ / ₂	ON3568D		117,30 259.00	0,431 15.20
	200 78 ³ / ₄	100 39 ³ / ₈	75 29 ¹ / ₂	ON3570D		122,90 271.00	0,468 16.50
	220 86 ⁵ / ₈	100 39 ³ / ₈	75 29 ¹ / ₂	ON3572D		129,40 285.00	0,506 17.90
	240 94 ¹ / ₂	100 39 ³ / ₈	75 29 ¹ / ₂	ON3574D		140,00 309.00	0,543 19.20
Sx Lh	180 70 ⁷ / ₈	100 39 ³ / ₈	75 29 ¹ / ₂	ON3568S		117,30 259.00	0,431 15.20
	200 78 ³ / ₄	100 39 ³ / ₈	75 29 ¹ / ₂	ON3570S		122,90 271.00	0,468 16.50
	220 86 ⁵ / ₈	100 39 ³ / ₈	75 29 ¹ / ₂	ON3572S		129,40 285.00	0,506 17.90
	240 94 ¹ / ₂	100 39 ³ / ₈	75 29 ¹ / ₂	ON3574S		140,00 309.00	0,543 19.20

Maggiorazioni - Supplement - Supplément			
Foratura per piano per 1 flap (non incluso) Drilling for top for 1 top access (not included) Perçage pour plateau pour 1 top access (pas inclus)	APP		
Foratura Ø 8 cm per piano Ø 3 ¹ / ₈ drilling for top Perçage Ø 8 cm pour plateau	APP		

APP = Posizione flap/tappo passacavi per scrivania
Top access/Lid for cable outlet position for desk
Position du top access/bouchon passe câbles pour bureau



cod. EEFL01



cod. CX9200R

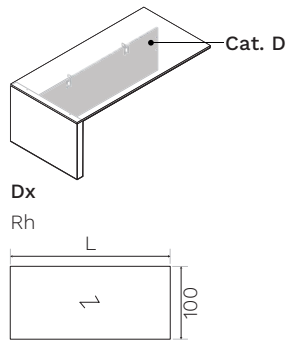


Albano

Scrivania pannellata appesa in melaminico con gonna strutturale rivestita in ecopelle (M + Cat. D) - Cornice di finitura: alluminio spazzolato (ZAL), verniciato goffrato nero (ZGNE), bronzo spazzolato (ZBR)

Melamine hanging panelled desk with eco-leather upholstered structural modesty panel (M + Cat. D) - Finishing frame: brushed aluminium (ZAL), black embossed painted (ZGNE), brushed bronze (ZBR)

Bureau pieds panneaux suspendu en mélamine avec voile de fond structurelle revêtue en simili-cuir (M + Cat. D) - Cadre de finition: aluminium brossé (ZAL), verni gaufré noir (ZGNE), bronze brossé (ZBR)



	L. W.	P. D.	H. H.	COD.		kg lb	m ³ ft ³
Dx Rh	180 70 ⁷ / ₈	100 39 ³ / ₈	75 29 ¹ / ₂	ON3568D		117,20 258.00	0,431 15.20
	200 78 ³ / ₄	100 39 ³ / ₈	75 29 ¹ / ₂	ON3570D		122,80 271.00	0,468 16.50
	220 86 ⁵ / ₈	100 39 ³ / ₈	75 29 ¹ / ₂	ON3572D		129,30 285.00	0,506 17.90
	240 94 ¹ / ₂	100 39 ³ / ₈	75 29 ¹ / ₂	ON3574D		140,00 309.00	0,543 19.20
Sx Lh	180 70 ⁷ / ₈	100 39 ³ / ₈	75 29 ¹ / ₂	ON3568S		117,20 258.00	0,431 15.20
	200 78 ³ / ₄	100 39 ³ / ₈	75 29 ¹ / ₂	ON3570S		122,80 271.00	0,468 16.50
	220 86 ⁵ / ₈	100 39 ³ / ₈	75 29 ¹ / ₂	ON3572S		129,30 285.00	0,506 17.90
	240 94 ¹ / ₂	100 39 ³ / ₈	75 29 ¹ / ₂	ON3574S		140,00 309.00	0,543 19.20

Maggiorazioni - Supplement - Supplément

Foratura per piano per 1 flap (non incluso)

Drilling for top for 1 top access (not included)
Perçage pour plateau pour 1 top access (pas inclus)

APP

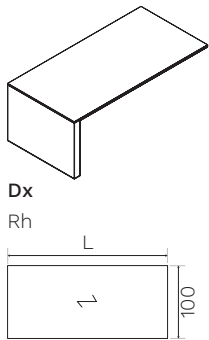
Foratura Ø 8 cm per piano

Ø 3¹/₈ drilling for top
Perçage Ø 8 cm pour plateau

APP

Albano

Scrivania pannellata appesa in legno - Cornice di finitura: alluminio spazzolato (ZAL), verniciato goffrato nero (ZGNE), bronzo spazzolato (ZBR)
 Veneer hanging panelled desk - Finishing frame: brushed aluminium (ZAL), black embossed painted (ZGNE), brushed bronze (ZBR)
 Bureau pieds panneaux suspendu en bois - Cadre de finition: aluminium brossé (ZAL), verni gaufré noir (ZGNE), bronze brossé (ZBR)



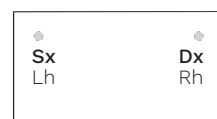
	L. W.	P. D.	H. H.	COD.		kg lb	m ³ ft ³
Dx Rh	180 70 ⁷ / ₈	100 39 ³ / ₈	75 29 ¹ / ₂	ON3568D		117,30 259.00	0,431 15.20
	200 78 ³ / ₄	100 39 ³ / ₈	75 29 ¹ / ₂	ON3570D		122,90 271.00	0,468 16.50
	220 86 ⁵ / ₈	100 39 ³ / ₈	75 29 ¹ / ₂	ON3572D		129,40 285.00	0,506 17.90
	240 94 ¹ / ₂	100 39 ³ / ₈	75 29 ¹ / ₂	ON3574D		140,00 309.00	0,543 19.20
Sx Lh	180 70 ⁷ / ₈	100 39 ³ / ₈	75 29 ¹ / ₂	ON3568S		117,30 259.00	0,431 15.20
	200 78 ³ / ₄	100 39 ³ / ₈	75 29 ¹ / ₂	ON3570S		122,90 271.00	0,468 16.50
	220 86 ⁵ / ₈	100 39 ³ / ₈	75 29 ¹ / ₂	ON3572S		129,40 285.00	0,506 17.90
	240 94 ¹ / ₂	100 39 ³ / ₈	75 29 ¹ / ₂	ON3574S		140,00 309.00	0,543 19.20

Maggiorazioni - Supplement - Supplément			
Foratura per piano per 1 flap (non incluso) Drilling for top for 1 top access (not included) Perçage pour plateau pour 1 top access (pas inclus)	APP		
Foratura Ø 8 cm per piano Ø 3 ¹ / ₈ drilling for top Perçage Ø 8 cm pour plateau	APP		

APP = Posizione flap/tappo passacavi per scrivania
 Top access/Lid for cable outlet position for desk
 Position du top access/bouchon passe câbles pour bureau



cod. EEFL01



cod. CX9200R

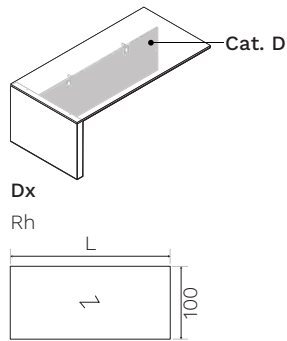


Albano

Scrivania pannellata appesa in legno con gonna strutturale rivestita in ecopelle (W + Cat. D) - Cornice di finitura: alluminio spazzolato (ZAL), verniciato goffrato nero (ZGNE), bronzo spazzolato (ZBR)

Veneer hanging panelled desk with eco-leather upholstered structural modesty panel (W + Cat. D) - Finishing frame: brushed aluminium (ZAL), black embossed painted (ZGNE), brushed bronze (ZBR)

Bureau pieds panneaux suspendu en bois avec voile de fond structurelle revêtu en simili-cuir (W + Cat. D) - Cadre de finition: aluminium brossé (ZAL), verni gaufré noir (ZGNE), bronze brossé (ZBR)



	L. W.	P. D.	H. H.	COD.		kg lb	m ³ ft ³
Dx Rh	180 70 ⁷ / ₈	100 39 ³ / ₈	75 29 ¹ / ₂	ON3568D		117,20 258.00	0,431 15.20
	200 78 ³ / ₄	100 39 ³ / ₈	75 29 ¹ / ₂	ON3570D		122,80 271.00	0,468 16.50
	220 86 ⁵ / ₈	100 39 ³ / ₈	75 29 ¹ / ₂	ON3572D		129,30 285.00	0,506 17.90
	240 94 ¹ / ₂	100 39 ³ / ₈	75 29 ¹ / ₂	ON3574D		140,00 309.00	0,543 19.20
Sx Lh	180 70 ⁷ / ₈	100 39 ³ / ₈	75 29 ¹ / ₂	ON3568S		117,20 258.00	0,431 15.20
	200 78 ³ / ₄	100 39 ³ / ₈	75 29 ¹ / ₂	ON3570S		122,80 271.00	0,468 16.50
	220 86 ⁵ / ₈	100 39 ³ / ₈	75 29 ¹ / ₂	ON3572S		129,30 285.00	0,506 17.90
	240 94 ¹ / ₂	100 39 ³ / ₈	75 29 ¹ / ₂	ON3574S		140,00 309.00	0,543 19.20

Maggiorazioni - Supplement - Supplément

Foratura per piano per 1 flap (non incluso)

Drilling for top for 1 top access (not included)
Perçage pour plateau pour 1 top access (pas inclus)

APP

Foratura Ø 8 cm per piano

Ø 3¹/₈ drilling for top
Perçage Ø 8 cm pour plateau

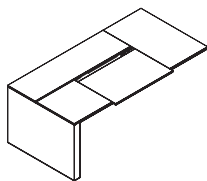
APP

Albano

Scrivania pannellata appesa e sliding-top in melaminico - Cornice di finitura: alluminio spazzolato (ZAL), verniciato goffrato nero (ZGNE), bronzo spazzolato (ZBR) - Vasca cablaggio inclusa

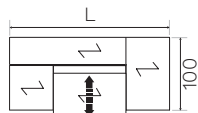
Melamine hanging panelled desk and sliding-top - Finishing frame: brushed aluminium (ZAL), black embossed painted (ZGNE), brushed bronze (ZBR) - Cable tray included

Bureau pieds panneaux suspendu et sliding-top en mélamine - Cadre de finition: aluminium brossé (ZAL), verni gaufré noir (ZGNE), bronze brossé (ZBR) - Goulotte câblage inclus



Dx

Rh

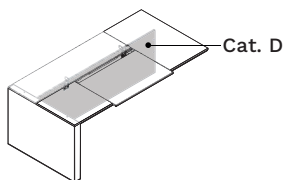


	L. W.	P. D.	H. H.	COD.		kg lb	m ³ ft ³
Dx Rh	180 70 ⁷ / ₈	100 39 ³ / ₈	75 29 ¹ / ₂	ON5568D		119,70 264.00	0,452 16.00
	200 78 ³ / ₄	100 39 ³ / ₈	75 29 ¹ / ₂	ON5570D		125,80 277.00	0,496 17.50
	220 86 ⁵ / ₈	100 39 ³ / ₈	75 29 ¹ / ₂	ON5572D		132,80 293.00	0,540 19.10
	240 94 ¹ / ₂	100 39 ³ / ₈	75 29 ¹ / ₂	ON5574D		143,80 317.00	0,583 20.60
Sx Lh	180 70 ⁷ / ₈	100 39 ³ / ₈	75 29 ¹ / ₂	ON5568S		119,70 264.00	0,452 16.00
	200 78 ³ / ₄	100 39 ³ / ₈	75 29 ¹ / ₂	ON5570S		125,80 277.00	0,496 17.50
	220 86 ⁵ / ₈	100 39 ³ / ₈	75 29 ¹ / ₂	ON5572S		132,80 293.00	0,540 19.10
	240 94 ¹ / ₂	100 39 ³ / ₈	75 29 ¹ / ₂	ON5574S		143,80 317.00	0,583 20.60

Scrivania pannellata appesa e sliding-top in melaminico, gonna strutturale rivestita in ecopelle (M + Cat. D) - Cornice di finitura: alluminio spazzolato (ZAL), verniciato goffrato nero (ZGNE), bronzo spazzolato (ZBR) - Vasca cablaggio inclusa

Melamine hanging panelled desk and sliding-top, eco-leather upholstered structural modesty panel (M + Cat. D) - Finishing frame: brushed aluminium (ZAL), black embossed painted (ZGNE), brushed bronze (ZBR) - Cable tray included

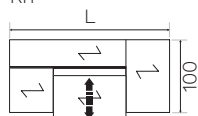
Bureau pieds panneaux suspendu et sliding-top en mélamine, voile de fond structurale revêtue en simili-cuir (M + Cat. D) - Cadre de finition: aluminium brossé (ZAL), verni gaufré noir (ZGNE), bronze brossé (ZBR) - Goulotte câblage inclus



Cat. D

Dx

Rh

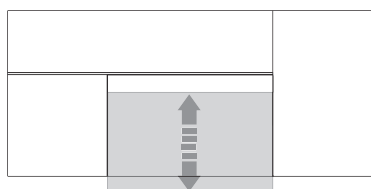


	L. W.	P. D.	H. H.	COD.		kg lb	m ³ ft ³
Dx Rh	180 70 ⁷ / ₈	100 39 ³ / ₈	75 29 ¹ / ₂	ON5568D		119,60 264.00	0,452 16.00
	200 78 ³ / ₄	100 39 ³ / ₈	75 29 ¹ / ₂	ON5570D		125,70 277.00	0,496 17.50
	220 86 ⁵ / ₈	100 39 ³ / ₈	75 29 ¹ / ₂	ON5572D		132,70 293.00	0,539 19.00
	240 94 ¹ / ₂	100 39 ³ / ₈	75 29 ¹ / ₂	ON5574D		143,70 317.00	0,583 20.60
Sx Lh	180 70 ⁷ / ₈	100 39 ³ / ₈	75 29 ¹ / ₂	ON5568S		119,60 264.00	0,452 16.00
	200 78 ³ / ₄	100 39 ³ / ₈	75 29 ¹ / ₂	ON5570S		125,70 277.00	0,496 17.50
	220 86 ⁵ / ₈	100 39 ³ / ₈	75 29 ¹ / ₂	ON5572S		132,70 293.00	0,539 19.00
	240 94 ¹ / ₂	100 39 ³ / ₈	75 29 ¹ / ₂	ON5574S		143,70 317.00	0,583 20.60

Sliding top = Piano con formella centrale scorrevole - Apertura formella 13 cm

Sliding top = Top with sliding central tile - 5¹/₈ opening tile

Sliding top = Plateau avec section central coulissant - Overture section 13 cm

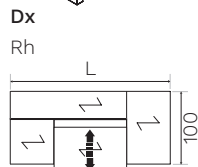
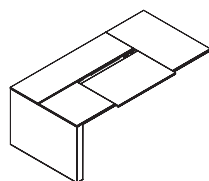


Albano

Scrivania pannellata appesa e sliding-top in legno - Cornice di finitura: alluminio spazzolato (ZAL), verniciato goffrato nero (ZGNE), bronzo spazzolato (ZBR) - Vasca cablaggio inclusa

Veneer hanging panelled desk and sliding-top - Finishing frame: brushed aluminium (ZAL), black embossed painted (ZGNE), brushed bronze (ZBR) - Cable tray included

Bureau pieds panneaux suspendu et sliding-top en bois - Cadre de finition: aluminium brossé (ZAL), verni gaufré noir (ZGNE), bronze brossé (ZBR) - Goulotte câblage inclus

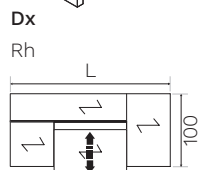
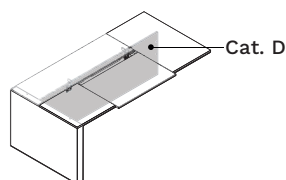


	L. W.	P. D.	H. H.	COD.		kg lb	m ³ ft ³
Dx Rh	180 70 ⁷ / ₈	100 39 ³ / ₈	75 29 ¹ / ₂	ON5568D		119,70 264.00	0,452 16.00
	200 78 ³ / ₄	100 39 ³ / ₈	75 29 ¹ / ₂	ON5570D		125,80 277.00	0,496 17.50
	220 86 ⁵ / ₈	100 39 ³ / ₈	75 29 ¹ / ₂	ON5572D		132,80 293.00	0,540 19.10
	240 94 ¹ / ₂	100 39 ³ / ₈	75 29 ¹ / ₂	ON5574D		143,80 317.00	0,583 20.60
Sx Lh	180 70 ⁷ / ₈	100 39 ³ / ₈	75 29 ¹ / ₂	ON5568S		119,70 264.00	0,452 16.00
	200 78 ³ / ₄	100 39 ³ / ₈	75 29 ¹ / ₂	ON5570S		125,80 277.00	0,496 17.50
	220 86 ⁵ / ₈	100 39 ³ / ₈	75 29 ¹ / ₂	ON5572S		132,80 293.00	0,540 19.10
	240 94 ¹ / ₂	100 39 ³ / ₈	75 29 ¹ / ₂	ON5574S		143,80 317.00	0,583 20.60

Scrivania pannellata appesa e sliding-top in legno, gona strutturale rivestita in ecopelle (W + Cat. D) - Cornice di finitura: alluminio spazzolato (ZAL), verniciato goffrato nero (ZGNE), bronzo spazzolato (ZBR) - Vasca cablaggio inclusa

Veneer hanging panelled desk and sliding-top, eco-leather upholstered structural modesty panel (W + Cat. D) - Finishing frame: brushed aluminium (ZAL), black embossed painted (ZGNE), brushed bronze (ZBR) - Cable tray included

Bureau pieds panneaux suspendu et sliding-top en bois, voile de fond structurelle revêtue en simili-cuir (W + Cat. D) - Cadre de finition: aluminium brossé (ZAL), verni gaufré noir (ZGNE), bronze brossé (ZBR) - Goulotte câblage inclus



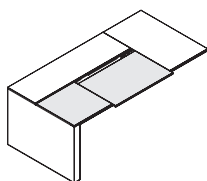
	L. W.	P. D.	H. H.	COD.		kg lb	m ³ ft ³
Dx Rh	180 70 ⁷ / ₈	100 39 ³ / ₈	75 29 ¹ / ₂	ON5568D		119,60 264.00	0,452 16.00
	200 78 ³ / ₄	100 39 ³ / ₈	75 29 ¹ / ₂	ON5570D		125,70 277.00	0,496 17.50
	220 86 ⁵ / ₈	100 39 ³ / ₈	75 29 ¹ / ₂	ON5572D		132,70 293.00	0,539 19.00
	240 94 ¹ / ₂	100 39 ³ / ₈	75 29 ¹ / ₂	ON5574D		143,70 317.00	0,583 20.60
Sx Lh	180 70 ⁷ / ₈	100 39 ³ / ₈	75 29 ¹ / ₂	ON5568S		119,60 264.00	0,452 16.00
	200 78 ³ / ₄	100 39 ³ / ₈	75 29 ¹ / ₂	ON5570S		125,70 277.00	0,496 17.50
	220 86 ⁵ / ₈	100 39 ³ / ₈	75 29 ¹ / ₂	ON5572S		132,70 293.00	0,539 19.00
	240 94 ¹ / ₂	100 39 ³ / ₈	75 29 ¹ / ₂	ON5574S		143,70 317.00	0,583 20.60

Albano

Scrivania pannellata appesa in melaminico - Sliding-top rivestito in ecopelle - Cornice di finitura: alluminio spazzolato (ZAL), verniciato goffrato nero (ZGNE), bronzo spazzolato (ZBR) - Vasca cablaggio inclusa

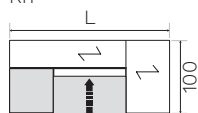
Melamine hanging panelled desk - Eco-leather upholstered sliding-top - Finishing frame: brushed aluminium (ZAL), black embossed painted (ZGNE), brushed bronze (ZBR) - Cable tray included

Bureau pieds panneaux suspendu en mélamine - Sliding-top revêtu en simili-cuir - Cadre de finition: aluminium brossé (ZAL), verni gaufré noir (ZGNE), bronze brossé (ZBR) - Goulotte câblage inclus



Dx

Rh

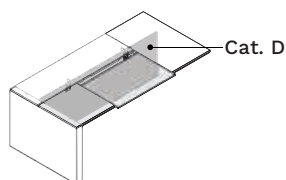


	L. W.	P. D.	H. H.	COD.		kg lb	m ³ ft ³
Dx Rh	180 70 ⁷ / ₈	100 39 ³ / ₈	75 29 ¹ / ₂	ON5568DP		121,70 268.00	0,452 16.00
	200 78 ³ / ₄	100 39 ³ / ₈	75 29 ¹ / ₂	ON5570DP		128,80 284.00	0,496 17.50
	220 86 ⁵ / ₈	100 39 ³ / ₈	75 29 ¹ / ₂	ON5572DP		134,80 297.00	0,540 19.10
	240 94 ¹ / ₂	100 39 ³ / ₈	75 29 ¹ / ₂	ON5574DP		146,80 324.00	0,583 20.60
Sx Lh	180 70 ⁷ / ₈	100 39 ³ / ₈	75 29 ¹ / ₂	ON5568SP		121,70 268.00	0,452 16.00
	200 78 ³ / ₄	100 39 ³ / ₈	75 29 ¹ / ₂	ON5570SP		128,80 284.00	0,496 17.50
	220 86 ⁵ / ₈	100 39 ³ / ₈	75 29 ¹ / ₂	ON5572SP		134,80 297.00	0,540 19.10
	240 94 ¹ / ₂	100 39 ³ / ₈	75 29 ¹ / ₂	ON5574SP		146,80 324.00	0,583 20.60

Scrivania pannellata appesa in melaminico con gonna strutturale rivestita in ecopelle (M + Cat. D) - Sliding-top rivestito in ecopelle - Cornice di finitura: alluminio spazzolato (ZAL), verniciato goffrato nero (ZGNE), bronzo spazzolato (ZBR) - Vasca cablaggio inclusa

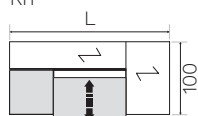
Melamine hanging panelled desk with eco-leather upholstered structural modesty panel (M + Cat. D) - Eco-leather upholstered sliding-top - Finishing frame: brushed aluminium (ZAL), black embossed painted (ZGNE), brushed bronze (ZBR) - Cable tray included

Bureau pieds panneaux suspendu en mélamine avec voile de fond structurelle revêtu en simili-cuir (M + Cat. D) - Sliding-top revêtu en simili-cuir - Cadre de finition: aluminium brossé (ZAL), verni gaufré noir (ZGNE), bronze brossé (ZBR) - Goulotte câblage inclus



Dx

Rh

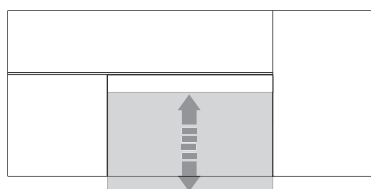


	L. W.	P. D.	H. H.	COD.		kg lb	m ³ ft ³
Dx Rh	180 70 ⁷ / ₈	100 39 ³ / ₈	75 29 ¹ / ₂	ON5568DP		121,60 268.00	0,452 16.00
	200 78 ³ / ₄	100 39 ³ / ₈	75 29 ¹ / ₂	ON5570DP		128,70 284.00	0,496 17.50
	220 86 ⁵ / ₈	100 39 ³ / ₈	75 29 ¹ / ₂	ON5572DP		134,70 297.00	0,539 19.00
	240 94 ¹ / ₂	100 39 ³ / ₈	75 29 ¹ / ₂	ON5574DP		146,70 323.00	0,583 20.60
Sx Lh	180 70 ⁷ / ₈	100 39 ³ / ₈	75 29 ¹ / ₂	ON5568SP		121,60 268.00	0,452 16.00
	200 78 ³ / ₄	100 39 ³ / ₈	75 29 ¹ / ₂	ON5570SP		128,70 284.00	0,496 17.50
	220 86 ⁵ / ₈	100 39 ³ / ₈	75 29 ¹ / ₂	ON5572SP		134,70 297.00	0,539 19.00
	240 94 ¹ / ₂	100 39 ³ / ₈	75 29 ¹ / ₂	ON5574SP		146,70 323.00	0,583 20.60

Sliding top = Piano con formella centrale scorrevole - Apertura formella 13 cm

Sliding top = Top with sliding central tile - 5¹/₈ opening tile

Sliding top = Plateau avec section central coulissant - Overture section 13 cm

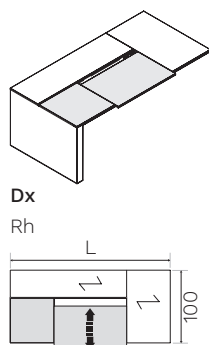


Albano

Scrivania pannellata appesa in legno - Sliding-top rivestito in ecopelle - Cornice di finitura: alluminio spazzolato (ZAL), verniciato goffrato nero (ZGNE), bronzo spazzolato (ZBR) - Vasca cablaggio inclusa

Veneer hanging panelled desk - Eco-leather upholstered sliding-top - Finishing frame: brushed aluminium (ZAL), black embossed painted (ZGNE), brushed bronze (ZBR) - Cable tray included

Bureau pieds panneaux suspendu en bois - Sliding-top revêtu en simili-cuir - Cadre de finition: aluminium brossé (ZAL), verni gaufré noir (ZGNE), bronze brossé (ZBR) - Goulotte câblage inclus

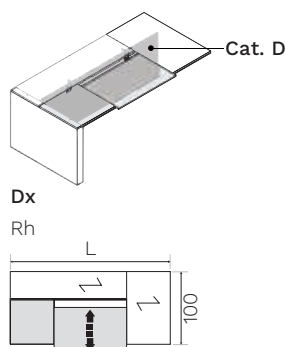


	L. W.	P. D.	H. H.	COD.		kg lb	m ³ ft ³
Dx Rh	180 70 ⁷ / ₈	100 39 ³ / ₈	75 29 ¹ / ₂	ON5568DP		121,70 268.00	0,452 16.00
	200 78 ³ / ₄	100 39 ³ / ₈	75 29 ¹ / ₂	ON5570DP		128,80 284.00	0,496 17.50
	220 86 ⁵ / ₈	100 39 ³ / ₈	75 29 ¹ / ₂	ON5572DP		134,80 297.00	0,540 19.10
	240 94 ¹ / ₂	100 39 ³ / ₈	75 29 ¹ / ₂	ON5574DP		146,80 324.00	0,583 20.60
Sx Lh	180 70 ⁷ / ₈	100 39 ³ / ₈	75 29 ¹ / ₂	ON5568SP		121,70 268.00	0,452 16.00
	200 78 ³ / ₄	100 39 ³ / ₈	75 29 ¹ / ₂	ON5570SP		128,80 284.00	0,496 17.50
	220 86 ⁵ / ₈	100 39 ³ / ₈	75 29 ¹ / ₂	ON5572SP		134,80 297.00	0,540 19.10
	240 94 ¹ / ₂	100 39 ³ / ₈	75 29 ¹ / ₂	ON5574SP		146,80 324.00	0,583 20.60

Scrivania pannellata appesa in legno con gonna strutturale rivestita in ecopelle (W + Cat. D) - Sliding-top rivestito in ecopelle - Cornice di finitura: alluminio spazzolato (ZAL), verniciato goffrato nero (ZGNE), bronzo spazzolato (ZBR) - Vasca cablaggio inclusa

Veneer hanging panelled desk with eco-leather upholstered structural modesty panel (W + Cat. D) - Eco-leather upholstered mdf sliding-top - Finishing frame: brushed aluminium (ZAL), black embossed painted (ZGNE), brushed bronze (ZBR) - Cable tray included

Bureau pieds panneaux suspendu en bois avec voile de fond structurelle revêtu en simili-cuir (W + Cat. D) - Sliding-top revêtu en simili-cuir - Cadre de finition: aluminium brossé (ZAL), verni gaufré noir (ZGNE), bronze brossé (ZBR) - Goulotte câblage inclus



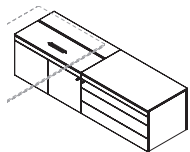
	L. W.	P. D.	H. H.	COD.		kg lb	m ³ ft ³
Dx Rh	180 70 ⁷ / ₈	100 39 ³ / ₈	75 29 ¹ / ₂	ON5568DP		121,60 268.00	0,452 16.00
	200 78 ³ / ₄	100 39 ³ / ₈	75 29 ¹ / ₂	ON5570DP		128,70 284.00	0,496 17.50
	220 86 ⁵ / ₈	100 39 ³ / ₈	75 29 ¹ / ₂	ON5572DP		134,70 297.00	0,539 19.00
	240 94 ¹ / ₂	100 39 ³ / ₈	75 29 ¹ / ₂	ON5574DP		146,70 323.00	0,583 20.60
Sx Lh	180 70 ⁷ / ₈	100 39 ³ / ₈	75 29 ¹ / ₂	ON5568SP		121,60 268.00	0,452 16.00
	200 78 ³ / ₄	100 39 ³ / ₈	75 29 ¹ / ₂	ON5570SP		128,70 284.00	0,496 17.50
	220 86 ⁵ / ₈	100 39 ³ / ₈	75 29 ¹ / ₂	ON5572SP		134,70 297.00	0,539 19.00
	240 94 ¹ / ₂	100 39 ³ / ₈	75 29 ¹ / ₂	ON5574SP		146,70 323.00	0,583 20.60

Albano

Mobile di servizio portante: melaminico (M), legno (W) - Vano tecnico con anta battente e serratura - Cassettiera con 3 cassetti

Supporting service unit: melamine (M), veneer (W) - Technical unit with hinged door and lock - 3-drawer pedestal

Meuble de service portant: mélamine (M), bois (W) - Niche technique avec porte battante et serrure - Caisson avec 3 tiroirs



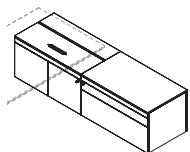
Dx
Rh

	L. W.	P. D.	H. H.	COD.		kg lb	m ³ ft ³
Dx Rh	200 78 ³ / ₄	60 23 ⁵ / ₈	57 22 ¹ / ₂	ON09750DM		152,40 336.00	1,151 40.70
Sx Lh	200 78 ³ / ₄	60 23 ⁵ / ₈	57 22 ¹ / ₂	ON09750SM		152,40 336.00	1,151 40.70

Mobile di servizio portante: melaminico (M), legno (W) - Vano tecnico con anta battente e serratura - Cassettiera con 1 cassetto e 1 classificatore

Supporting service unit: melamine (M), veneer (W) - Technical unit with hinged door and lock - Pedestal with 1 drawer and 1 filing drawer

Meuble de service portant: mélamine (M), bois (W) - Niche technique avec porte battante et serrure - Caisson avec 1 tiroir et 1 tiroir D/S



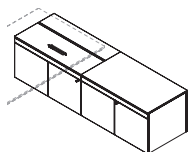
Dx
Rh

	L. W.	P. D.	H. H.	COD.		kg lb	m ³ ft ³
Dx Rh	200 78 ³ / ₄	60 23 ⁵ / ₈	57 22 ¹ / ₂	ON09751DM		152,40 336.00	1,151 40.70
Sx Lh	200 78 ³ / ₄	60 23 ⁵ / ₈	57 22 ¹ / ₂	ON09751SM		152,40 336.00	1,151 40.70

Mobile di servizio portante: melaminico (M), legno (W) - Vano tecnico con anta battente e serratura - Vano con 2 ante e serratura

Supporting service unit: melamine (M), veneer (W) - Technical unit with hinged door and lock - Unit with 2 doors and lock

Meuble de service portant: mélamine (M), bois (W) - Niche technique avec porte battante et serrure - Niche avec 2 portes et serrure



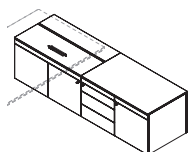
Dx
Rh

	L. W.	P. D.	H. H.	COD.		kg lb	m ³ ft ³
Dx Rh	200 78 ³ / ₄	60 23 ⁵ / ₈	57 22 ¹ / ₂	ON09752DM		144,40 318.00	1,151 40.70
Sx Lh	200 78 ³ / ₄	60 23 ⁵ / ₈	57 22 ¹ / ₂	ON09752SM		144,40 318.00	1,151 40.70

Mobile di servizio portante: melaminico (M), legno (W) - Vano tecnico con anta battente e serratura - Cassettiera con 3 cassetti - Vano con anta e serratura

Supporting service unit: melamine (M), veneer (W) - Technical unit with hinged door and lock - 3-drawer pedestal - Unit with door and lock

Meuble de service portant: mélamine (M), bois (W) - Niche technique avec porte battante et serrure - Caisson avec 3 tiroirs - Niche avec porte et serrure



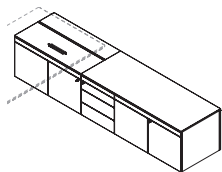
Dx
Rh

	L. W.	P. D.	H. H.	COD.		kg lb	m ³ ft ³
Dx Rh	200 78 ³ / ₄	60 23 ⁵ / ₈	57 22 ¹ / ₂	ON09760DM		149,40 329.00	1,177 41.60
Sx Lh	200 78 ³ / ₄	60 23 ⁵ / ₈	57 22 ¹ / ₂	ON09760SM		149,40 329.00	1,177 41.60

Mobile di servizio portante: melaminico (M), legno (W) - Vano tecnico con anta battente e serratura - Cassettiera con 3 cassetti - Vano con 2 ante e serratura

Supporting service unit: melamine (M), veneer (W) - Technical unit with hinged door and lock - 3-drawer pedestal - Unit with 2 doors and lock

Meuble de service portant: mélamine (M), bois (W) - Niche technique avec porte battante et serrure - Caisson avec 3 tiroirs - Niche avec 2 portes et serrure



Dx
Rh

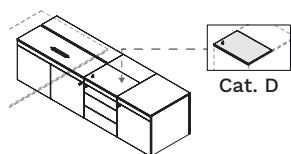
	L. W.	P. D.	H. H.	COD.		kg lb	m ³ ft ³
Dx Rh	250 98 ³ / ₈	60 23 ⁵ / ₈	57 22 ¹ / ₂	ON09757DM		181,90 401.00	2,655 93.80
Sx Lh	250 98 ³ / ₈	60 23 ⁵ / ₈	57 22 ¹ / ₂	ON09757SM		181,90 401.00	2,655 93.80

Albano

Mobile di servizio portante: melaminico (M), legno (W) - Vano tecnico con anta battente e serratura - Cassettiera con 3 cassetti - Vano con anta e serratura - Top secretaire con serratura

Supporting service unit: melamine (M), veneer (W) - Technical unit with hinged door and lock - 3-drawer pedestal - Unit with door and lock - Top secretaire with lock

Meuble de service portant: mélamine (M), bois (W) - Niche technique avec porte battante et serrure - Caisson avec 3 tiroirs - Niche avec porte et serrure - Top secretaire avec serrure



Cat. D

Dx

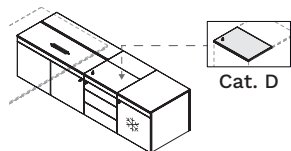
Rh

	L. W.	P. D.	H. H.	COD.		kg lb	m ³ ft ³
Dx Rh	200 78 ³ / ₄	60 23 ⁵ / ₈	57 22 ¹ / ₂	ON09761DM		147,10 324.00	1,150 40.60
Sx Lh	200 78 ³ / ₄	60 23 ⁵ / ₈	57 22 ¹ / ₂	ON09761SM		147,10 324.00	1,150 40.60

Mobile di servizio portante: melaminico (M), legno (W) - Vano tecnico con anta battente e serratura - Cassettiera con 3 cassetti - Top secretaire con serratura - Vano con frigo - Si prega di specificare voltaggio (220-230V/115V)

Supporting service unit: melamine (M), veneer (W) - Technical unit with hinged door and lock - 3-drawer pedestal - Top secretaire with lock - Unit with fridge - Please specify voltage (220-230V/115V)

Meuble de service portant: mélamine (M), bois (W) - Niche technique avec porte battante et serrure - Caisson avec 3 tiroirs - Top secretaire avec serrure - Niche avec réfrigérateur - Veuillez préciser le voltage (220-230V/115V)



Cat. D

Dx

Rh

	L. W.	P. D.	H. H.	COD.		kg lb	m ³ ft ³
Dx Rh	200 78 ³ / ₄	60 23 ⁵ / ₈	57 22 ¹ / ₂	ON09762DM		153,70 339.00	1,080 38.10
Sx Lh	200 78 ³ / ₄	60 23 ⁵ / ₈	57 22 ¹ / ₂	ON09762SM		153,70 339.00	1,080 38.10

Maggiorazioni - Supplement - Supplément

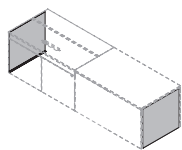
Top secretaire rivestito in ecopelle
Eco-leather upholstered top secretaire
Top secretaire revêtu en simili-cuir

Cat. D

Coppia carter di finitura in alluminio - Opzionali

Pair of aluminium finishing covers - Optional

Paire de couverture de finition en aluminium - Optionnel

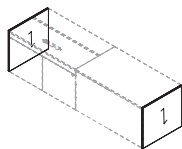


	L. W.	P. D.	H. H.	COD.		kg lb	m ³ ft ³
	56 22"	0,1 0"	52 20 ¹ / ₂ "	ON29770		7,00 15.40	0,009 0.32

Coppia di fianchi di finitura in melaminico - Opzionali

Pair of melamine finishing sides - Optional

Paire de côtés de finition en mélamine - Optionnel

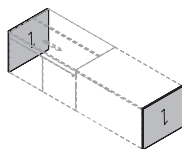


	L. W.	P. D.	H. H.	COD.		kg lb	m ³ ft ³
	56 22"	1,8 3/4"	52 20 ¹ / ₂ "	ON29770		11,80 26.00	0,021 0.74

Coppia di fianchi di finitura in legno - Opzionali

Pair of veneer finishing sides - Optional

Paire de côtés de finition en bois - Optionnel

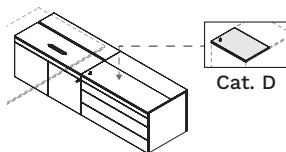


	L. W.	P. D.	H. H.	COD.		kg lb	m ³ ft ³
	56 22"	2 3/4"	52 20 ¹ / ₂ "	ON29770		11,80 26.00	0,021 0.74

Albano

Mobile di servizio portante: melaminico (M), legno (W) - Vano tecnico con anta battente e serratura - Cassettiera con 3 cassetti - Top secretaire con serratura

Supporting service unit: melamine (M), veneer (W) - Technical unit with hinged door and lock - 3-drawer pedestal - Top secretaire with lock
 Meuble de service portant: mélamine (M), bois (W) - Niche technique avec porte battante et serrure - Caisson avec 3 tiroirs - Top secretaire avec serrure



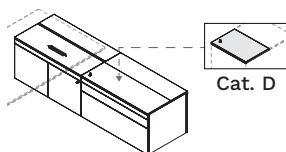
Dx
Rh

	L. W.	P. D.	H. H.	COD.		kg lb	m ³ ft ³
Dx Rh	200 78 ³ / ₄	60 23 ⁵ / ₈	57 22 ¹ / ₂	ON09753DM		144,80 319.00	1,095 38.70
Sx Lh	200 78 ³ / ₄	60 23 ⁵ / ₈	57 22 ¹ / ₂	ON09753SM		144,80 319.00	1,095 38.70

Mobile di servizio portante: melaminico (M), legno (W) - Vano tecnico con anta battente e serratura - Cassettiera con 1 cassetto e 1 classificatore - Top secretaire con serratura

Supporting service unit: melamine (M), veneer (W) - Technical unit with hinged door and lock - Pedestal with 1 drawer and 1 filing drawer - Top secretaire with lock

Meuble de service portant: mélamine (M), bois (W) - Niche technique avec porte battante et serrure - Caisson avec 1 tiroir et 1 tiroir D/S - Top secretaire avec serrure



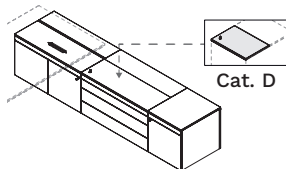
Dx
Rh

	L. W.	P. D.	H. H.	COD.		kg lb	m ³ ft ³
Dx Rh	200 78 ³ / ₄	60 23 ⁵ / ₈	57 22 ¹ / ₂	ON09754DM		149,00 328.00	1,249 44.10
Sx Lh	200 78 ³ / ₄	60 23 ⁵ / ₈	57 22 ¹ / ₂	ON09754SM		149,00 328.00	1,249 44.10

Mobile di servizio portante: melaminico (M), legno (W) - Vano tecnico con anta battente e serratura - Cassettiera con 3 cassetti - Vano con anta e serratura - Top secretaire con serratura

Supporting service unit: melamine (M), veneer (W) - Technical unit with hinged door and lock - 3-drawer pedestal - Unit with door and lock - Top secretaire with lock

Meuble de service portant: mélamine (M), bois (W) - Niche technique avec porte battante et serrure - Caisson avec 3 tiroirs - Niche avec porte et serrure - Top secretaire avec serrure



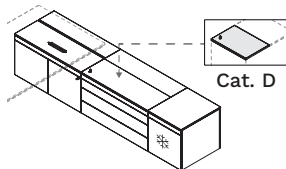
Dx
Rh

	L. W.	P. D.	H. H.	COD.		kg lb	m ³ ft ³
Dx Rh	250 98 ³ / ₈	60 23 ⁵ / ₈	57 22 ¹ / ₂	ON09755DM		178,30 393.00	2,602 91.90
Sx Lh	250 98 ³ / ₈	60 23 ⁵ / ₈	57 22 ¹ / ₂	ON09755SM		178,30 393.00	2,602 91.90

Mobile di servizio portante: melaminico (M), legno (W) - Vano tecnico con anta battente e serratura - Cassettiera con 3 cassetti - Top secretaire con serratura - Vano con frigo - Si prega di specificare voltaggio (220-230V/115V)

Supporting service unit: melamine (M), veneer (W) - Technical unit with hinged door and lock - 3-drawer pedestal - Top secretaire with lock - Unit with fridge - Please specify voltage (220-230V/115V)

Meuble de service portant: mélamine (M), bois (W) - Niche technique avec porte battante et serrure - Caisson avec 3 tiroirs - Top secretaire avec serrure - Niche avec réfrigérateur - Veuillez préciser le voltage (220-230V/115V)



Dx
Rh

	L. W.	P. D.	H. H.	COD.		kg lb	m ³ ft ³
Dx Rh	250 98 ³ / ₈	60 23 ⁵ / ₈	57 22 ¹ / ₂	ON09759DM		186,80 412.00	1,339 47.30
Sx Lh	250 98 ³ / ₈	60 23 ⁵ / ₈	57 22 ¹ / ₂	ON09759SM		186,80 412.00	1,339 47.30

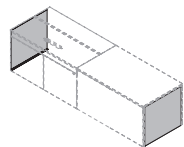
Maggiorazioni - Supplement - Supplément			
Top secretaire rivestito in ecopelle Eco-leather covered secretaire top Top secretaire revêtu en simili-cuir	Cat. D		

Albano

Coppia carter di finitura in alluminio - Opzionali

Pair of aluminium finishing covers - Optional

Paire de couverture de finition en aluminium - Optionnel

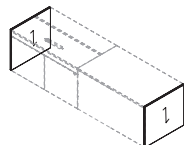


L. W.	P. D.	H. H.	COD.	kg lb	m ³ ft ³
56 22"	0,1 0"	52 20*1/2	ON29770	7,00 15.40	0,009 0.32

Coppia di fianchi di finitura in melaminico - Opzionali

Pair of melamine finishing sides - Optional

Paire de côtés de finition en mélamine - Optionnel

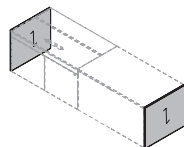


L. W.	P. D.	H. H.	COD.	kg lb	m ³ ft ³
56 22"	1,8 3/4"	52 20*1/2	ON29770	11,80 26.00	0,021 0.74

Coppia di fianchi di finitura in legno - Opzionali

Pair of veneer finishing sides - Optional

Paire de côtés de finition en bois - Optionnel



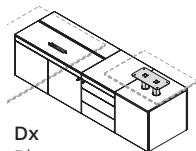
L. W.	P. D.	H. H.	COD.	kg lb	m ³ ft ³
56 22"	2 3/4"	52 20*1/2	ON29770	11,80 26.00	0,021 0.74

Albano

Mobile di servizio portante: melaminico (M), legno (W) - Vano tecnico con anta battente e serratura - Cassettiera con 3 cassetti - Predisposizione per piano di servizio elevabile in altezza fino a 105 cm (non incluso) - Si prega di specificare il tipo di spina: E (Schuko), I (UK), A (US)

Supporting service unit: melamine (M), veneer (W) - Technical unit with hinged door and lock - 3-drawer pedestal - Equipped for height-adjustable service top up to 41"3/8 (not included) - Please specify the type of plug: E (Schuko), I (UK), A (US)

Meuble de service portant: mélamine (M), bois (W) - Niche technique avec porte battante et serrure - Caisson avec 3 tiroirs - Prédiposition pour plateau de service réglable en ht. jusqu'à 105 cm (pas inclus) - Veuillez spécifier le type de prise : E (Schuko), I (UK), A (US)



Dx
Rh

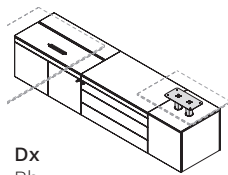


	L. W.	P. D.	H. H.	COD.		kg lb	m ³ ft ³
Dx Rh	200 78"3/4	60 23"5/8	57 22"1/2	ON09764DM		159,96 353.00	1,183 41.80
Sx Lh	200 78"3/4	60 23"5/8	57 22"1/2	ON09764SM		159,96 353.00	1,183 41.80

Mobile di servizio portante: melaminico (M), legno (W) - Vano tecnico con anta battente e serratura - Cassettiera con 3 cassetti - Predisposizione per piano di servizio elevabile in altezza fino a 105 cm (non incluso) - Si prega di specificare il tipo di spina: E (Schuko), I (UK), A (US)

Supporting service unit: melamine (M), veneer (W) - Technical unit with hinged door and lock - 3-drawer pedestal - Equipped for height-adjustable service top up to 41"3/8 (not included) - Please specify the type of plug: E (Schuko), I (UK), A (US)

Meuble de service portant: mélamine (M), bois (W) - Niche technique avec porte battante et serrure - Caisson avec 3 tiroirs - Prédiposition pour plateau de service réglable en ht. jusqu'à 105 cm (pas inclus) - Veuillez spécifier le type de prise : E (Schuko), I (UK), A (US)



Dx
Rh

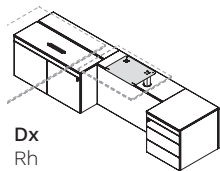


	L. W.	P. D.	H. H.	COD.		kg lb	m ³ ft ³
Dx Rh	250 98"3/8	60 23"5/8	57 22"1/2	ON09763DM		195,46 431.00	2,661 94.00
Sx Lh	250 98"3/8	60 23"5/8	57 22"1/2	ON09763SM		195,46 431.00	2,661 94.00

Mobile di servizio portante: melaminico (M), legno (W) - Vano tecnico con anta battente e serratura - Predisposizione per piano di servizio elevabile in altezza fino a 105 cm (non incluso) - Cassettiera con 3 cassetti - Si prega di specificare il tipo di spina: E (Schuko), I (UK), A (US)

Supporting service unit: melamine (M), veneer (W) - Technical unit with hinged door and lock - Equipped for height-adjustable service top up to 41"3/8 (not included) - 3-drawer pedestal - Please specify the type of plug: E (Schuko), I (UK), A (US)

Meuble de service portant: mélamine (M), bois (W) - Niche technique avec porte battante et serrure - Caisson avec 3 tiroirs - Veuillez spécifier le type de prise : E (Schuko), I (UK), A (US)



Dx
Rh



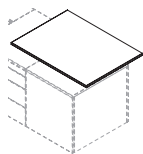
	L. W.	P. D.	H. H.	COD.		kg lb	m ³ ft ³
Dx Rh	250 98"3/8	60 23"5/8	57 22"1/2	ON09765DM		170,16 375.00	1,403 49.50
Sx Lh	250 98"3/8	60 23"5/8	57 22"1/2	ON09765SM		170,16 375.00	1,403 49.50

Albano

Piano di servizio in melaminico - (portata max: 30 kg)

Melamine service top - (max. load capacity: 66.2 lb)

Plateau de service en mélamine - (poids max. supporté: 30 kg)

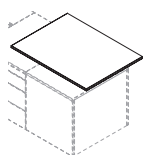


L. W.	P. D.	H. H.	COD.	kg lb	m ³ ft ³
80 31 ¹ / ₂	60 23 ⁵ / ₈	1,8 3/ ₄ "	ON0108	4,20 9.26	0,010 0.36

Piano di servizio in legno - (portata max: 30 kg)

Veneer service top - (max. load capacity: 66.2 lb)

Plateau de service en bois - (poids max. supporté: 30 kg)

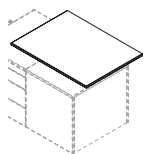


L. W.	P. D.	H. H.	COD.	kg lb	m ³ ft ³
80 31 ¹ / ₂	60 23 ⁵ / ₈	2 3/ ₄ "	ON0108	4,20 9.26	0,010 0.36

Piano di servizio in hpl finitura: marmo zebra marrone (HLMZ), Calacatta bianco (HLCB) - (portata max: 30 kg)

Brown zebra marble (HLMZ) or white Calacatta (HLCB) finish hpl top - (max. load capacity: 66.2 lb)

Plateau de service en hpl finition: marbre marron zébré (HLMZ), Calacatta blanc (HLCB) - (poids max. supporté: 30 kg)

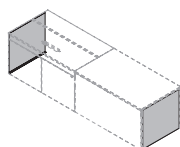


L. W.	P. D.	H. H.	COD.	kg lb	m ³ ft ³
80 31 ¹ / ₂	60 23 ⁵ / ₈	1,8 3/ ₄ "	ON0108	4,20 9.26	0,010 0.36

Coppia carter di finitura in alluminio - Opzionali

Pair of aluminium finishing covers - Optional

Paire de couverture de finition en aluminium - Optionnel

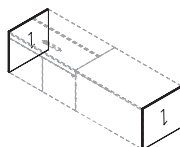


L. W.	P. D.	H. H.	COD.	kg lb	m ³ ft ³
56 22"	0,1 0"	52 20 ¹ / ₂	ON29770	7,00 15.40	0,009 0.32

Coppia di fianchi di finitura in melaminico - Opzionali

Pair of melamine finishing sides - Optional

Paire de côtés de finition en mélamine - Optionnel

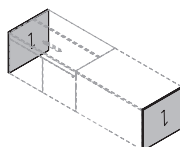


L. W.	P. D.	H. H.	COD.	kg lb	m ³ ft ³
56 22"	1,8 3/ ₄ "	52 20 ¹ / ₂	ON29770	11,80 26.00	0,021 0.74

Coppia di fianchi di finitura in legno - Opzionali

Pair of veneer finishing sides - Optional

Paire de côtés de finition en bois - Optionnel



L. W.	P. D.	H. H.	COD.	kg lb	m ³ ft ³
56 22"	2 3/ ₄ "	52 20 ¹ / ₂	ON29770	11,80 26.00	0,021 0.74

Albano

Mobile di servizio portante con 2 ante scorrevoli: melaminico (M), legno (W) - Maniglia in metallo (Metal)

2-sliding door supporting service unit: melamine (M), veneer (W) - Metal handle (Metal)

Meuble de service portant avec 2 portes coulissantes: mélamine (M), bois (W) - Poignée en métal (Metal)

	L. W.	P. D.	H. H.	COD.		kg lb	m ³ ft ³
Dx Rh	165 65"	65 25"5/8	55,8 22"	ON0986		79,73 176.00	0,230 8.14
Sx Lh	165 65"	65 25"5/8	55,8 22"	ON0987		79,73 176.00	0,230 8.14

Cassettiera con 3 cassetti per mobile di servizio: melaminico (M), legno (W) - Soft-closing system - Maniglia in metallo (Metal) - Vaschetta porta cancelleria (non inclusa)

Pedestal with 3 drawers for service unit: melamine (M), veneer (W) - Soft-closing system - Metal handle (Metal) - Stationery tray (not included)

Caisson avec 3 tiroirs pour meuble de service: mélamine (M), bois (W) - Soft-closing system - Poignée en métal (Metal) - Bac à plumier (pas inclus)

	L. W.	P. D.	H. H.	COD.		kg lb	m ³ ft ³
	40 15"3/4	53 20"7/8	49 19"1/4	CS836		16,55 36.50	0,130 4.59

Cassettiera con 1 cassetto e 1 classificatore per mobile di servizio: melaminico (M), legno (W) - Vaschetta porta cancelleria (non inclusa) - Soft-closing system - Maniglia in metallo (Metal)

Pedestal with 1 drawer and 1 filing drawer for service unit: melamine (M), veneer (W) - Soft-closing system - Metal handle (Metal) - Stationery tray (not included)

Caisson avec 1 tiroir et 1 tiroir D/S pour meuble de service: mélamine (M), bois (W) - Soft-closing system - Poignée en métal (Metal) - Bac à plumier (pas inclus)

	L. W.	P. D.	H. H.	COD.		kg lb	m ³ ft ³
	40 15"3/4	53 20"7/8	49 19"1/4	CS837		18,70 41.20	0,129 4.56

Cassettiera con 2 cassetti per mobile di servizio - Soft-closing system - Maniglia in metallo (Metal) - Vaschetta porta cancelleria (non inclusa)

Pedestal with 2 drawers for service unit - Soft-closing system - Metal handle (Metal) - Stationery tray (not included)

Caisson avec 2 tiroirs pour meuble de service - Soft-closing system - Poignée en métal (Metal) - Bac à plumier (pas inclus)

	L. W.	P. D.	H. H.	COD.		kg lb	m ³ ft ³
	42 16"1/2	41 16"1/8	35 13"3/4	CS835		17,90 39.50	0,078 2.75

Ripiano spostabile per mobile di servizio (B)

Movable shelf for service unit (B)

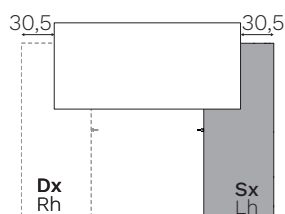
Étagère amovible pour meuble de service (B)

	L. W.	P. D.	H. H.	COD.		kg lb	m ³ ft ³
	80 31"1/2	57 22"1/2	1,8 3/4"	PPR080		8,50 18.70	0,023 0.81

Posizione mobile di servizio

Service unit position

Position meuble de service

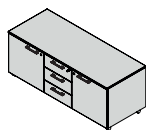


Albano

Mobile di servizio con 3 cassetti e 2 ante in melaminico (M) su ruote - Soft-closing system - Maniglia in metallo (Metal) - 5 ruote piroettanti Ø 37 mm (2 ruote con freno) - Vaschetta porta cancelleria (non inclusa)

3-drawer and 2-door melamine service unit (M) on castor - Soft-closing system - Metal handle (Metal) - 5 swivel castors Ø 1 1/2 (2 castors with brake) - Stationery tray (not included)

Meuble de service avec 3 tiroirs et 2 portes en mélamine (M) sur roulettes - Soft-closing system - Poignée en métal (Metal) - 5 roulettes pivotantes de Ø 37 mm (2 roulettes avec frein) - Bac à plumier (pas inclus)



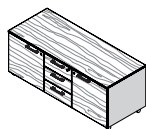
Metal

L. W.	P. D.	H. H.	COD.		kg lb	m ³ ft ³
140 55 ¹ / ₈	55 21 ⁵ / ₈	54 21 ¹ / ₄	CS870M		57,80 127,00	0,158 5.58

Mobile di servizio con 3 cassetti e 2 ante su ruote - Scocca in melaminico + frontali e top in legno (M + W) - Soft-closing system - Maniglia in metallo (Metal) - 5 ruote piroettanti Ø 37 mm (2 ruote con freno) - Vaschetta porta cancelleria (non inclusa)

3-drawer and 2-door service unit on castors - Melamine structure + veneer fronts and top (M + W) - Soft-closing system - Metal handle (Metal) - 5 swivel castors Ø 1 1/2 (2 castors with brake) - Stationery tray (not included)

Meuble de service avec 3 tiroirs et 2 portes sur roulettes - Structure en mélamine + façades et dessus en bois (M + W) - Soft-closing system - Poignée en métal (Metal) - 5 roulettes pivotantes de Ø 37 mm (2 roulettes avec frein) - Bac à plumier (pas inclus)



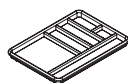
Metal

L. W.	P. D.	H. H.	COD.		kg lb	m ³ ft ³
140 55 ¹ / ₈	55 21 ⁵ / ₈	54 21 ¹ / ₄	CS870MW		57,80 127,00	0,158 5.58

Vaschetta porta cancelleria

Stationery tray

Bac à plumier

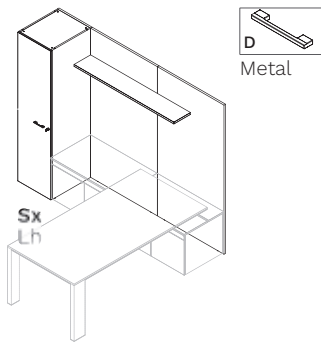


L. W.	P. D.	H. H.	COD.		kg lb	m ³ ft ³
23,3 9 ¹ / ₈	33,6 13 ¹ / ₄	2,5 1"	VAPC		0,55 1.21	0,007 0.25

Albano

Composizione in melaminico con armadio e mensola - Maniglia in metallo - Da completare con mobile di servizio portante L. 200 cm e scrivania appesa

Melamine composition with cabinet and shelf - Metal handle - Must be completed with W. 78"3/4 supporting service unit and hanging desk
Composition en mélamine avec armoire et étagère - Poignée en métal - À compléter avec meuble de service portant L. 200 cm et bureau suspendu

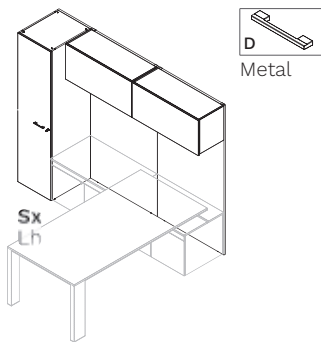


	L. W.	P. D.	H. H.	COD.		kg lb	m ³ ft ³
Sx Lh	250 98"3/8	62 24"3/8	197 77"1/2	ON1001S		307,85 679.00	0,386 13.60
Dx Rh	250 98"3/8	62 24"3/8	197 77"1/2	ON1001D		307,85 679.00	0,386 13.60

Composizione in melaminico con armadio e pensili - Maniglia in metallo - Da completare con mobile di servizio portante L. 200 cm e scrivania appesa

Melamine composition with cabinet and hanging units - Metal handle - Must be completed with W. 78"3/4 supporting service unit and hanging desk

Composition en mélamine avec armoire et meubles suspendus - Poignée en métal - À compléter avec meuble de service portant L. 200 cm et bureau suspendu



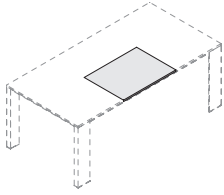
	L. W.	P. D.	H. H.	COD.		kg lb	m ³ ft ³
Sx Lh	250 98"3/8	62 24"3/8	197 77"1/2	ON1002S		349,19 770.00	0,705 24.90
Dx Rh	250 98"3/8	62 24"3/8	197 77"1/2	ON1002D		349,19 770.00	0,705 24.90

Albano

Sottomano in ecopelle - Cat. D (Skill)

Eco-leather desk pad - Cat. D (Skill)

Sous-main en simili-cuir - Cat. D (Skill)

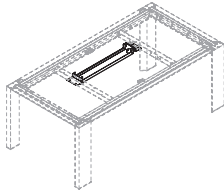


L. W.	P. D.	H. H.	COD.	kg lb	m ³ ft ³
90 35 ³ / ₈	72 28 ³ / ₈	1 3/8"	FC9502	10,72 23.60	0,068 2.40

Vasca cablaggio

Cable tray

Goulotte câblage

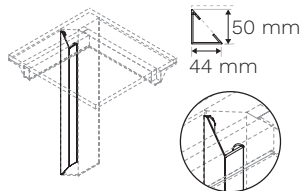


	L. W.	P. D.	H. H.	COD.	kg lb	m ³ ft ³
180 70 ⁷ / ₈	50 19 ⁵ / ₈	15 5 ⁷ / ₈	9 3 ¹ / ₂	ON9218	2,40 5.29	0,021 0.74
200 78 ³ / ₄	70 27 ¹ / ₂	15 5 ⁷ / ₈	9 3 ¹ / ₂	ON9220	2,90 6.39	0,027 0.97
220 86 ⁵ / ₈	90 35 ³ / ₈	15 5 ⁷ / ₈	9 3 ¹ / ₂	ON9222	3,40 7.50	0,034 1.20
240 94 ¹ / ₂	110 43 ¹ / ₄	15 5 ⁷ / ₈	9 3 ¹ / ₂	ON9224	3,80 8.38	0,040 1.42

Vertebra passacavi

Vertical cable duct

Vertèbre passe-câbles



L. W.	P. D.	H. H.	COD.	kg lb	m ³ ft ³
5 2"	4 1 ⁵ / ₈	71 28"	ON9271	1,50 3.31	0,006 0.21